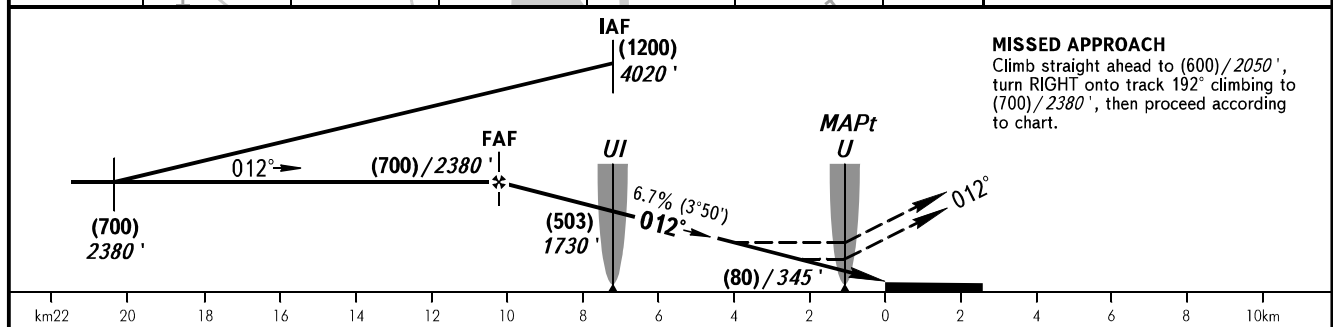
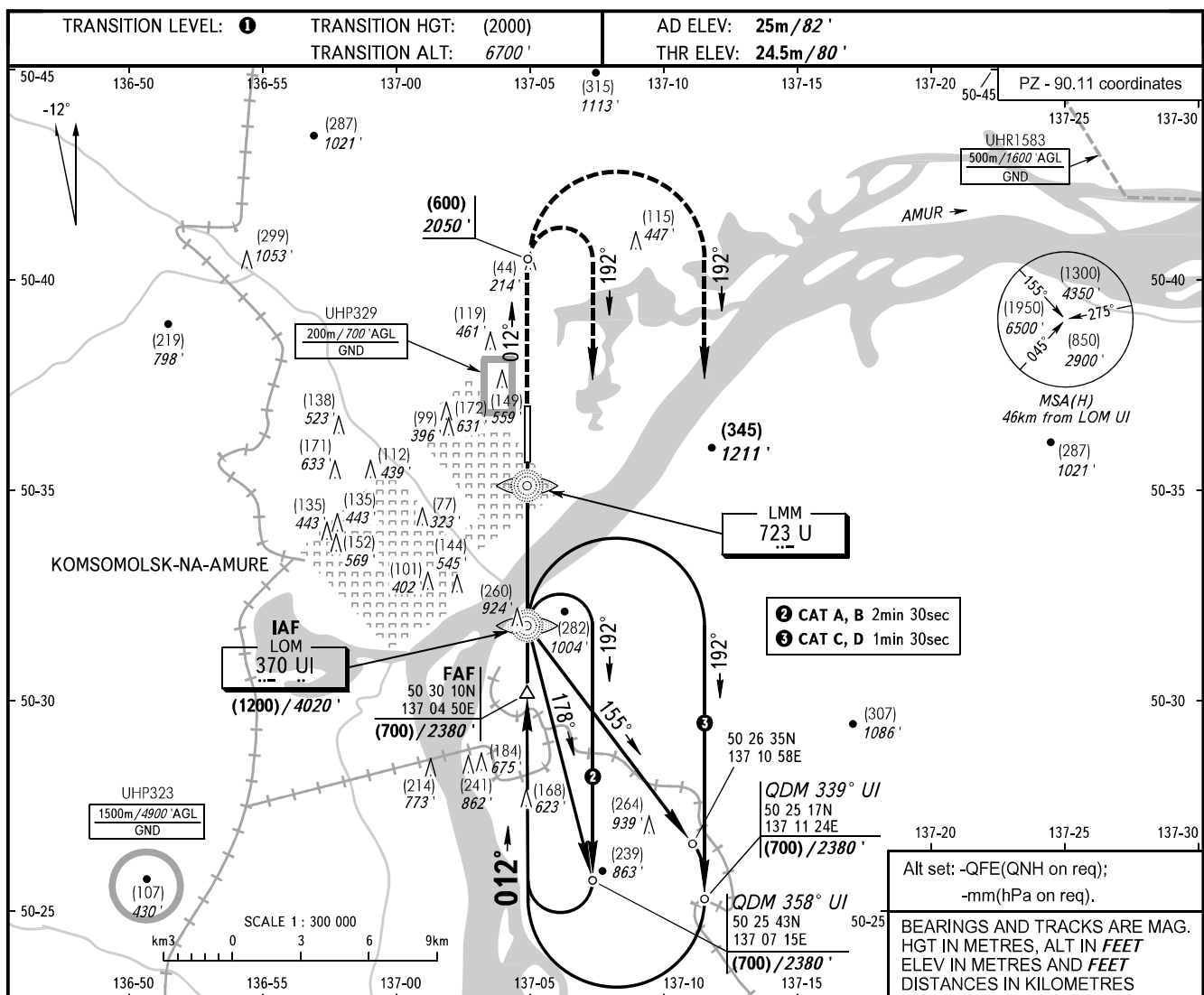


INSTRUMENT
APPROACH
CHART - ICAO

OGNENYY 124.000

KOMSOMOLSK-NA-AMURE, RUSSIA
DZEMGI
2 NDB, NDB Z RWY 01



MISSED APPROACH
Climb straight ahead to (600)/2050', turn RIGHT onto track 192° climbing to (700)/2380', then proceed according to chart.

OCA(H)		A	B	C	D								
Straight-in Approach	2 NDB	With FAF	205(180) 660'	205(180) 660'	205(180) 660'	205(180) 660'							
		WO FAF	440(415) 1440'	440(415) 1440'	440(415) 1440'	440(415) 1440'							
	NDB (LOM)	With FAF	370(345) 1210'	370(345) 1210'	370(345) 1210'	370(345) 1210'							
		WO FAF	375(350) 1230'	375(350) 1230'	375(350) 1230'	375(350) 1230'							
Circling		425(400) 1400'	485(460) 1600'	515(490) 1690'	515(490) 1690'								
GROUND SPEED		km/h	150	180	210	240	270	300	330	360	390	420	450
RATE OF DESCENT		m/s	2.8	3.4	3.9	4.5	5.0	5.6	6.1	6.7	7.3	7.8	8.4

1 TRANSITION LEVEL:
- FL080 when QFE is 742mm mercury column or above (989 hPa);
- FL090 when QFE is less than 742mm mercury column (989 hPa).
NOTE
MAPt at LMM U. Timing not authorized for defining MAPt.