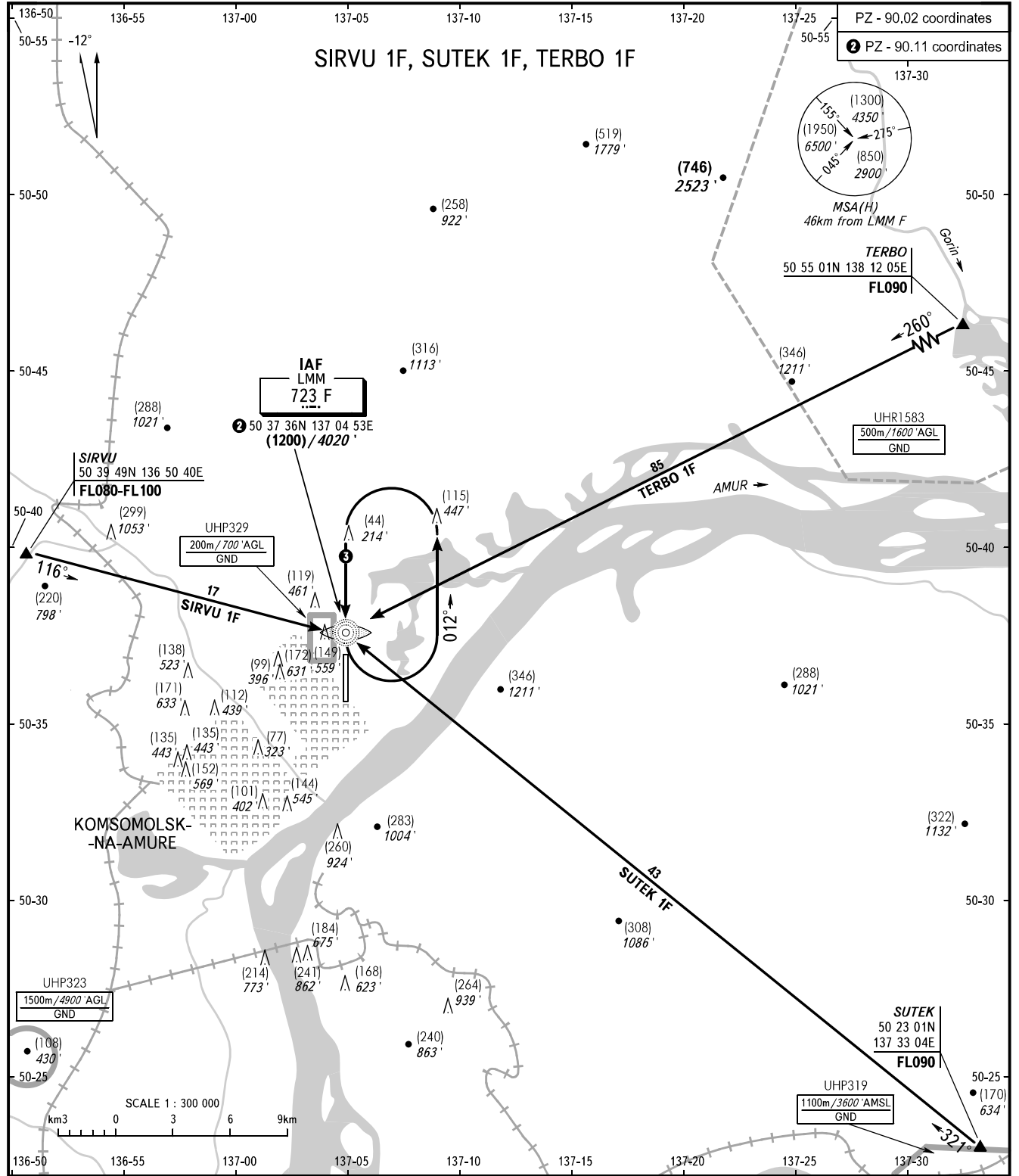


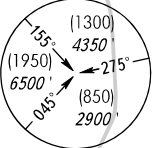
STANDARD ARRIVAL CHART
INSTRUMENT (STAR) - ICAO

KOMSOMOLSK-NA-AMURE, RUSSIA
DZEMGI
RWY 19

TRANSITION
LEVEL: **1**



PZ - 90.02 coordinates
2 PZ - 90.11 coordinates



- 1** TRANSITION LEVEL:
- FL080 when QFE is 742mm mercury column or above (989 hPa);
- FL090 when QFE is less than 742mm mercury column (989 hPa).
- 2** Holding area at LMM F, FL080-FL110, MAX IAS 425km/h.

BEARINGS AND TRACKS ARE MAGNETIC
HEIGHTS IN METRES, ALTITUDES IN FEET
ELEVATIONS IN METRES AND FEET
DISTANCES IN KILOMETRES

Alt set: -QFE(QNH on req);
-mm(hPa on req).