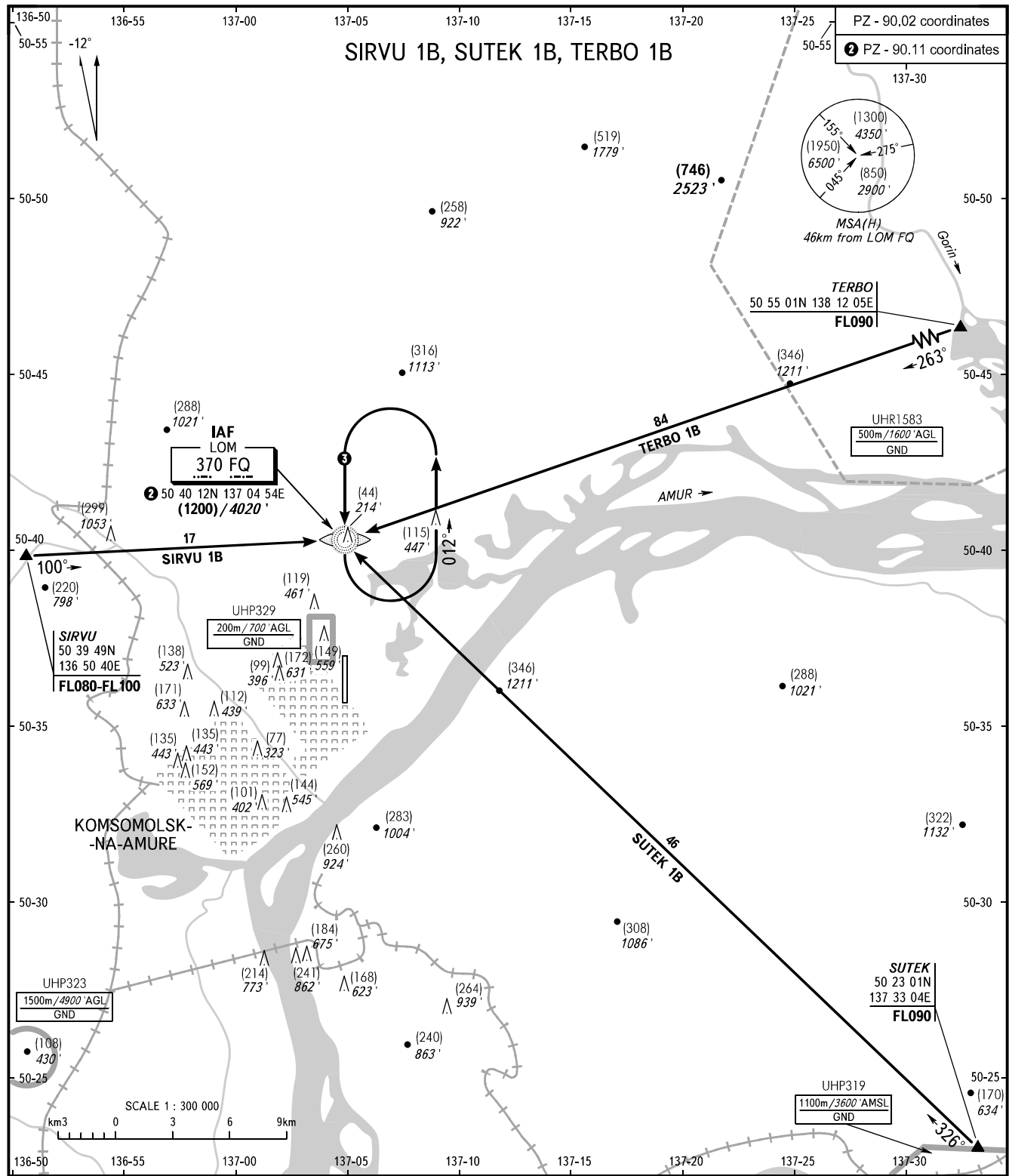


STANDARD ARRIVAL CHART
INSTRUMENT (STAR) - ICAO

KOMSOMOLSK-NA-AMURE, RUSSIA
DZEMGI
RWY 19

TRANSITION
LEVEL: ①



OGNENNY 124.000

① TRANSITION LEVEL:
- FL080 when QFE is 742mm mercury column or above (989 hPa);
- FL090 when QFE is less than 742mm mercury column (989 hPa).
② Holding area at LOM FQ, FL080-FL110, MAX IAS 425km/h.

| | |
|---|--|
| BEARINGS AND TRACKS ARE MAGNETIC HEIGHTS IN METRES, ALTITUDES IN FEET ELEVATIONS IN METRES AND FEET DISTANCES IN KILOMETRES | Alt set: -QFE(QNH on req); -mm(hPa on req). |
|---|--|

AIRCAM AMDT 02/24

Federal Air Transport Agency

CHANGE: Heading, OBST