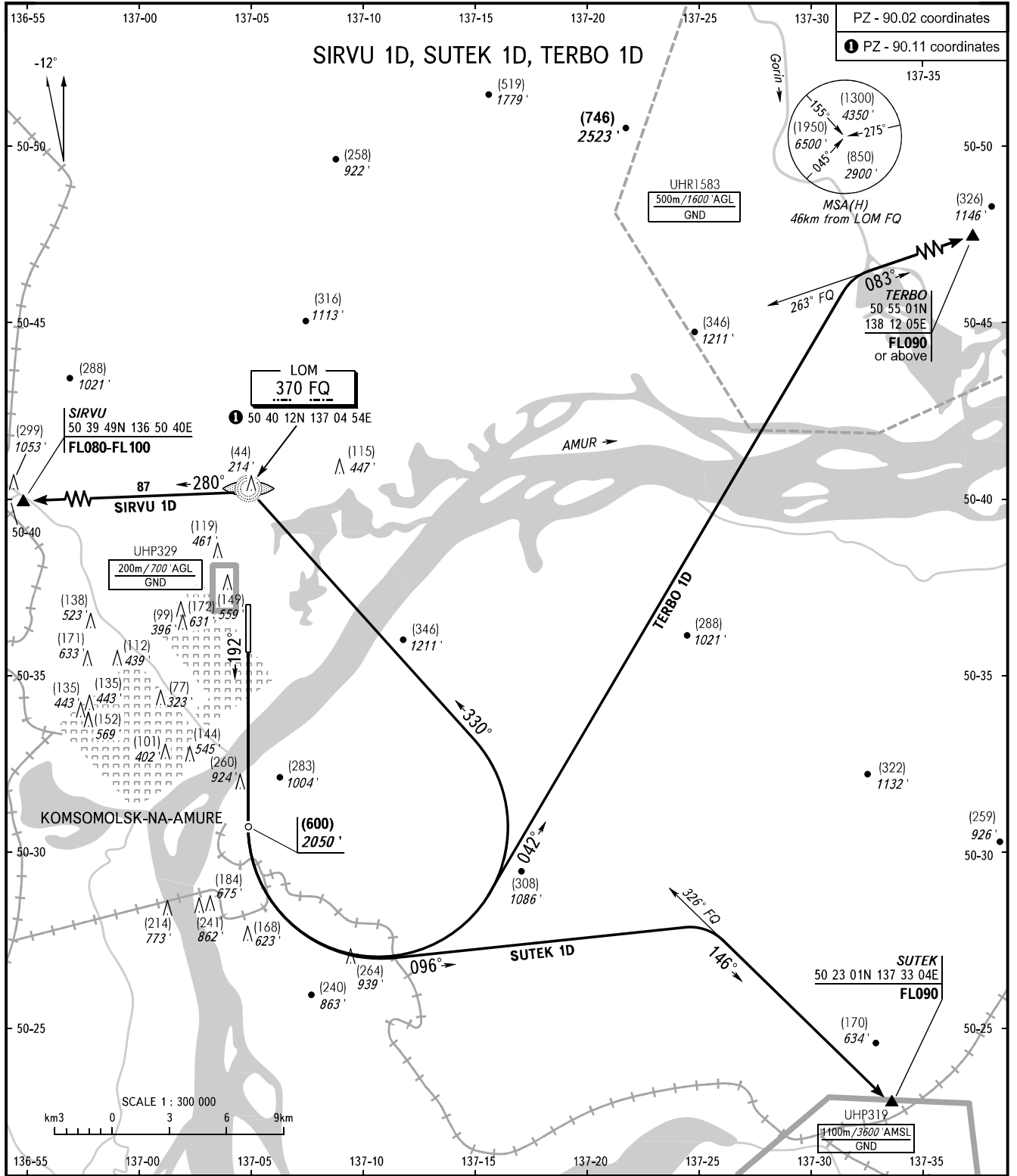


STANDARD DEPARTURE CHART
INSTRUMENT (SID) - ICAO

TRANSITION HGT: (2000)
TRANSITION ALT: 6700'

KOMSOMOLSK-NA-AMURE, RUSSIA
DZEMGI
RWY 19



OGNENNY 124.000

WARNING
Minimum climb gradient is 5.5% up to HGT (360)/ 1260'.
If unable to maintain climb gradient 5.5%, advise ATC unit.

BEARINGS AND TRACKS ARE MAGNETIC
HEIGHTS IN METRES, ALTITUDES IN FEET
ELEVATIONS IN METRES AND FEET
DISTANCES IN KILOMETRES

Alt set: -QFE(QNH on req);
-mm(hPa on req).