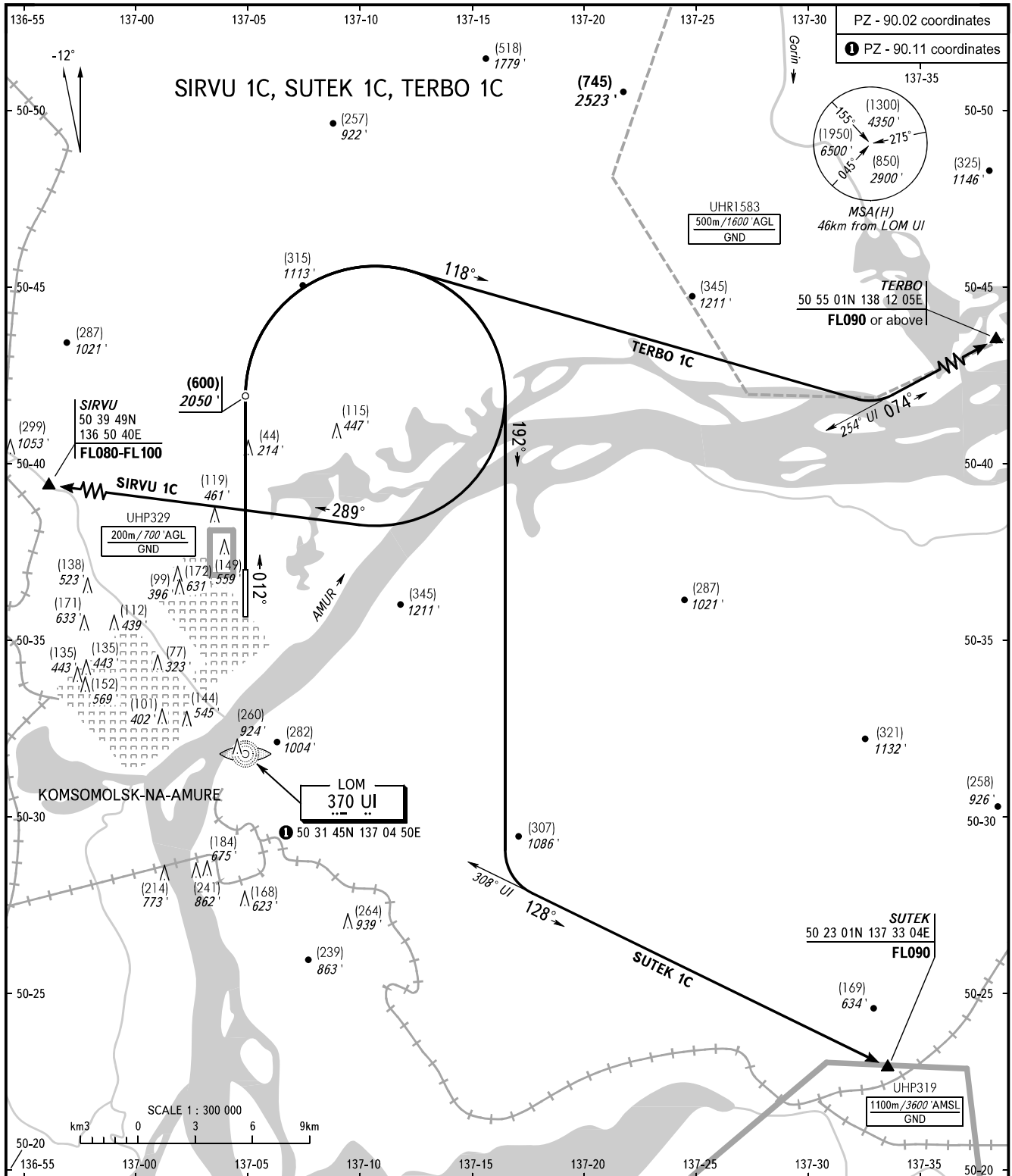


STANDARD DEPARTURE CHART
INSTRUMENT (SID) - ICAO

TRANSITION HGT: (2000)
TRANSITION ALT: 6700'

KOMSOMOLSK-NA-AMURE, RUSSIA
DZEMGI
RWY 01



OGNENNY 124.000	WARNING Minimum climb gradient is 5.0% up to HGT (130)/500'. If unable to maintain climb gradient 5.0%, advise ATC unit.	Alt set: -QFE(QNH on req); -mm(hPa on req).
BEARINGS AND TRACKS ARE MAGNETIC HEIGHTS IN METRES, ALTITUDES IN FEET ELEVATIONS IN METRES AND FEET DISTANCES IN KILOMETRES		

CHANGE: Heading, OBST