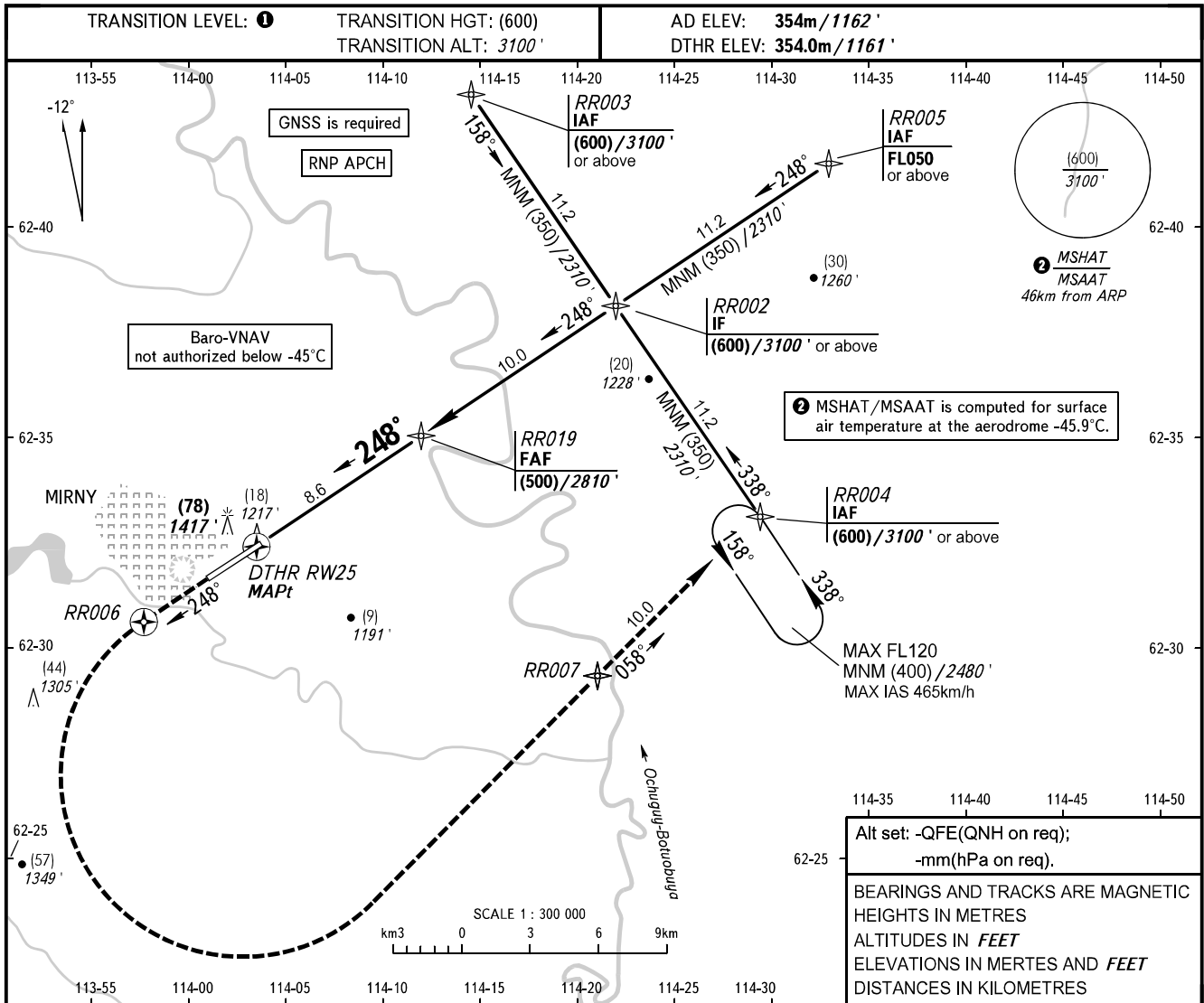


**INSTRUMENT  
APPROACH  
CHART - ICAO**

VYSHKA	125.900
START	134.100

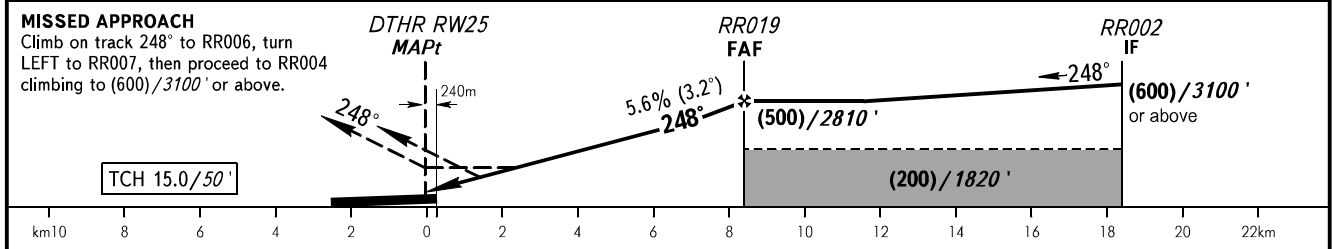
**MIRNY, RUSSIA  
MIRNY  
RNP RWY 25**



Alt set: -QFE(QNH on req);  
-mm(hPa on req).

BEARINGS AND TRACKS ARE MAGNETIC  
HEIGHTS IN METRES  
ALTITUDES IN FEET  
ELEVATIONS IN METRES AND FEET  
DISTANCES IN KILOMETRES

DIST to RW25	2.0	4.0	6.0	8.0
HEIGHT/ALTITUDE	(127)/1577'	(239)/1944'	(351)/2311'	(462)/2677'



**1** TRANSITION LEVEL:  
- FL050 when QFE is 728mm mercury column (970.6 hPa) or above;  
- FL060 when QFE is 701mm mercury column (934.6 hPa) or above, but less than 728mm mercury column (970.6 hPa);  
- FL070 when QFE is less than 701mm mercury column (934.6 hPa).

Circling approach north of AD is PROHIBITED.

GROUND SPEED	km/h	150	180	210	240	270	300	330	360	390
	kt	81	97	113	130	146	162	178	194	211
RATE OF DESCENT	m/s	2.2	2.6	3.0	3.5	3.9	4.3	4.8	5.2	5.6
	ft/min	427	512	597	682	768	853	938	1024	1109