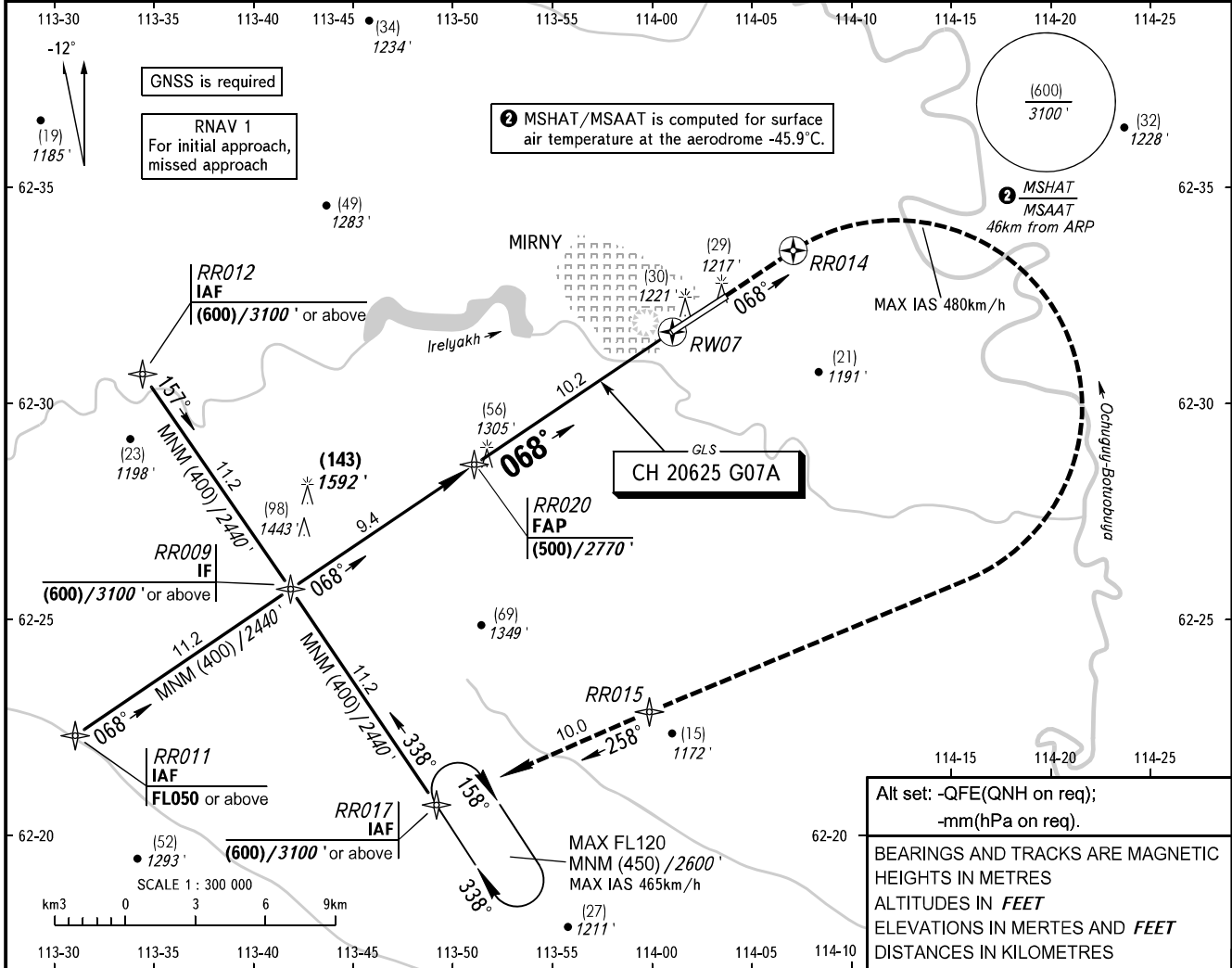


**INSTRUMENT
APPROACH
CHART - ICAO**

VYSHKA **125.900**
START **134.100**

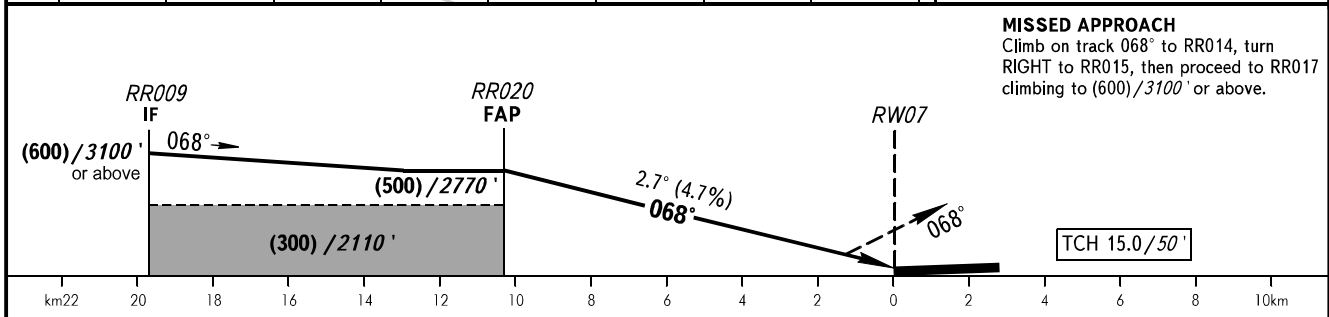
MIRNY, RUSSIA
MIRNY
GLS RWY 07

GBAS CH 20625 G07A **TRANSITION LEVEL: ①** **TRANSITION HGT: (600)** **AD ELEV: 354m / 1162'**
TRANSITION ALT: 3100' **THR ELEV: 342.0m / 1123'**



Alt set: -QFE(QNH on req);
-mm(hPa on req).

BEARINGS AND TRACKS ARE MAGNETIC
HEIGHTS IN METRES
ALTITUDES IN FEET
ELEVATIONS IN METRES AND FEET
DISTANCES IN KILOMETRES



OCA(H)	A	B	C	D
Straight-in Approach	412 (70) 1352' (230')	415 (73) 1362' (240')	418 (76) 1372' (250')	421 (79) 1382' (260')
Circling	475 (120) 1560' (400')	505 (150) 1660' (500')	535 (180) 1760' (600')	565 (210) 1860' (690')

① TRANSITION LEVEL:
- FL050 when QFE is 728mm mercury column (970.6 hPa) or above;
- FL060 when QFE is 701mm mercury column (934.6 hPa) or above, but less than 728mm mercury column (970.6 hPa);
- FL070 when QFE is less than 701mm mercury column (934.6 hPa).

Circling approach north of AD is PROHIBITED.

GROUND SPEED	km/h	150	180	210	240	270	300	330	360	390
	kt	81	97	113	130	146	162	178	194	211
RATE OF DESCENT	m/s	2.2	2.6	3.0	3.5	3.9	4.3	4.8	5.2	5.6
	ft/min	427	512	597	682	768	853	938	1024	1109

CHANGE: New chart