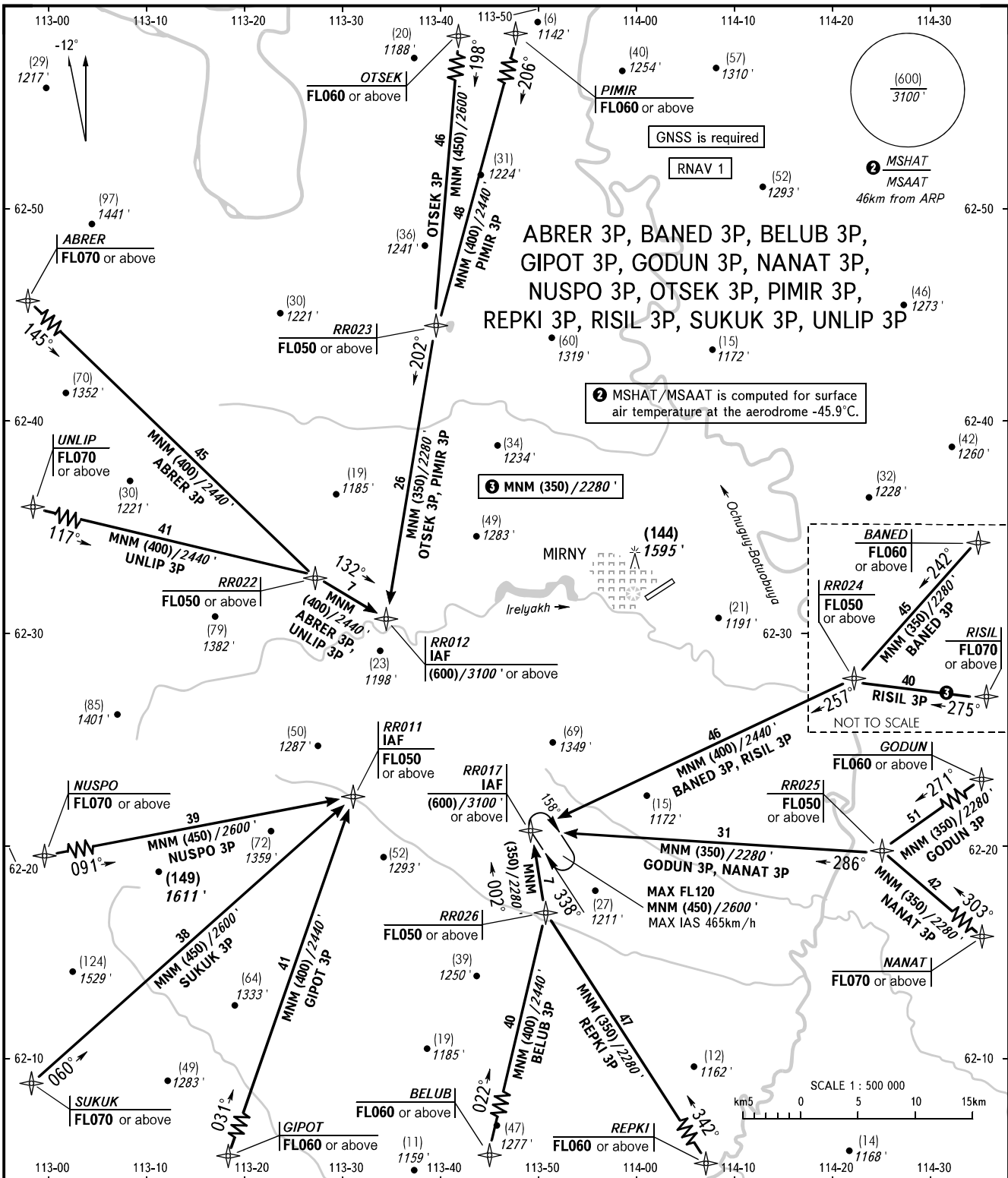


STANDARD ARRIVAL CHART
INSTRUMENT (STAR) - ICAO

MIRNY, RUSSIA
MIRNY
RNAV RWY 07

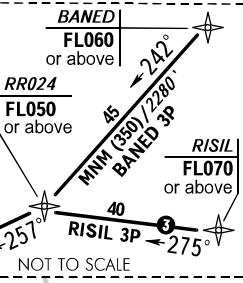
TRANSITION
LEVEL : 1



ABRER 3P, BANED 3P, BELUB 3P,
GIPOT 3P, GODUN 3P, NANAT 3P,
NUSPO 3P, OTSEK 3P, PIMIR 3P,
REPKI 3P, RISIL 3P, SUKUK 3P, UNLIP 3P

MSHAT/MSAAT is computed for surface
air temperature at the aerodrome -45.9°C.

MNM (350)/2280'



- 1 TRANSITION LEVEL:
- FL050 when QFE is 728mm mercury column (970.6 hPa) or above;
 - FL060 when QFE is 701mm mercury column (934.6 hPa) or above, but less than 728mm mercury column (970.6 hPa);
 - FL070 when QFE is less than 701mm mercury column (934.6 hPa).

VYSHKA 125.900
START 134.100

BEARINGS AND TRACKS ARE MAGNETIC
HEIGHTS IN METRES
ALTITUDES IN FEET
ELEVATIONS IN METRES AND FEET
DISTANCES ARE IN KILOMETRES

Alt set: -QFE(QNH on req);
-mm(hPa on req).

CHANGE: New chart