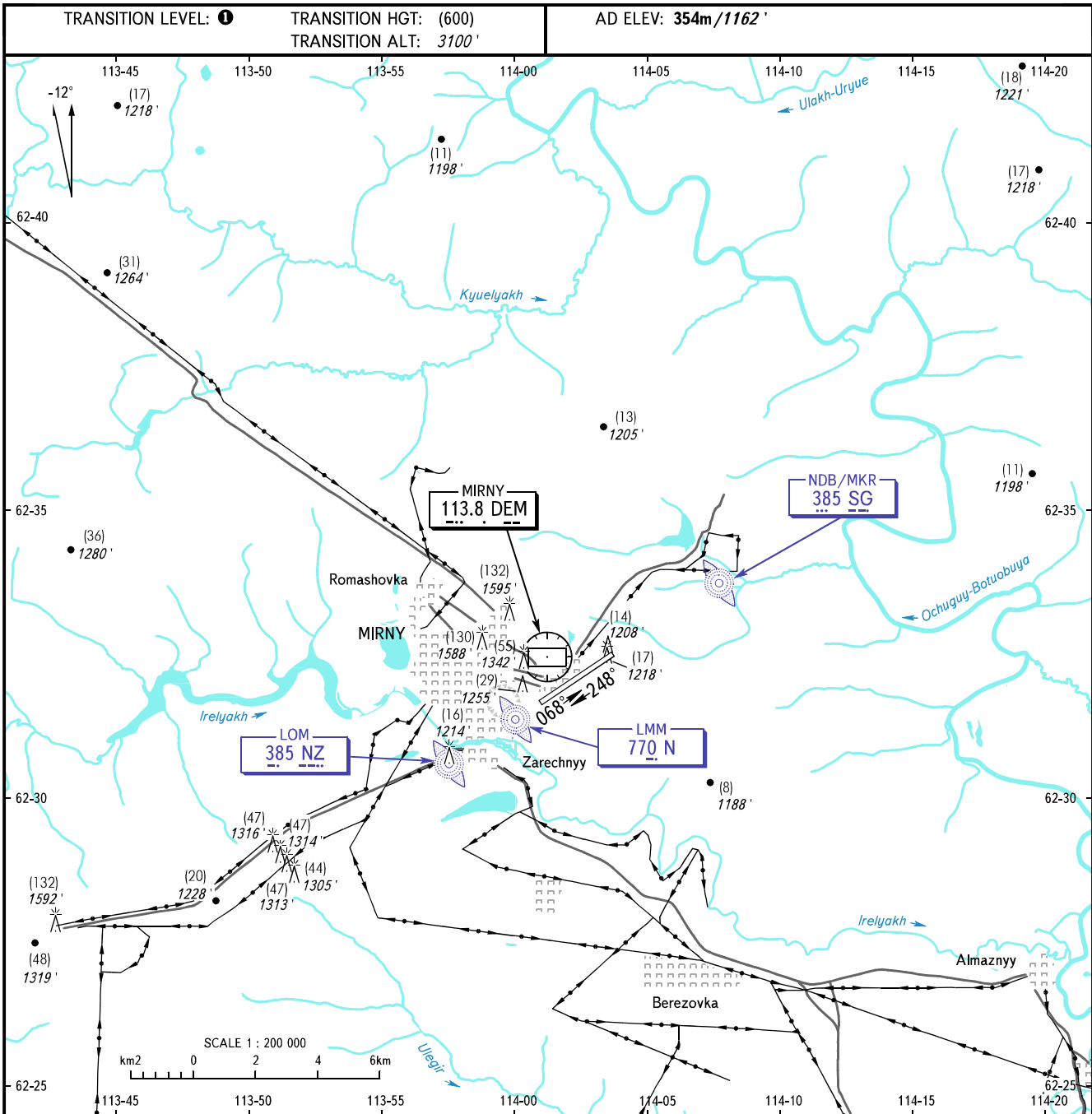


**VISUAL
APPROACH
CHART - ICAO**

VYSHKA	125.900
START	134.100

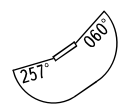
MIRNY, RUSSIA
MIRNY
RWY 07/25



VISUAL APPROACH PROCEDURES:

- Visual approach conditions:
 - the flight crew shall report that meteorological conditions allow to carry out visual approach and landing;
 - a pilot-in-command shall take a decision to carry out visual approach by arrangement with ATS unit;
 - the flight crew shall have a visual contact with the runway and/or its references;
 - the execution of visual approach will not cause a delay in take-off and landing operations of aircraft;
 - the responsibility for maintaining safe flight heights shall be completely rested on the flight crew.
- A visual control of glide path indication using RWY 07 PAPI - 2°40' is AVBL.
- When a visual contact with the runway and/or its references is lost, the flight crew must proceed to LOM climbing to MSHAT/MSAAT (600)/3100', then execute the established approach procedure under IFR.

SPEED RESTRICTION
MAX IAS 450km/h below FL050



Circling approach north of AD is PROHIBITED.

BEARINGS AND TRACKS ARE MAGNETIC
HEIGHTS IN METRES
ALTITUDES IN FEET
ELEVATIONS IN METRES AND FEET
DISTANCES ARE IN KILOMETRES

Alt set: -QFE(QNH on req);
-mm(hPa on req).

- 1 TRANSITION LEVEL:**
- FL050 when QFE is 728mm mercury column (970.6 hPa) or above;
 - FL060 when QFE is 701mm mercury column (934.6 hPa) or above, but less than 728mm mercury column (970.6 hPa);
 - FL070 when QFE is less than 701mm mercury column (934.6 hPa).