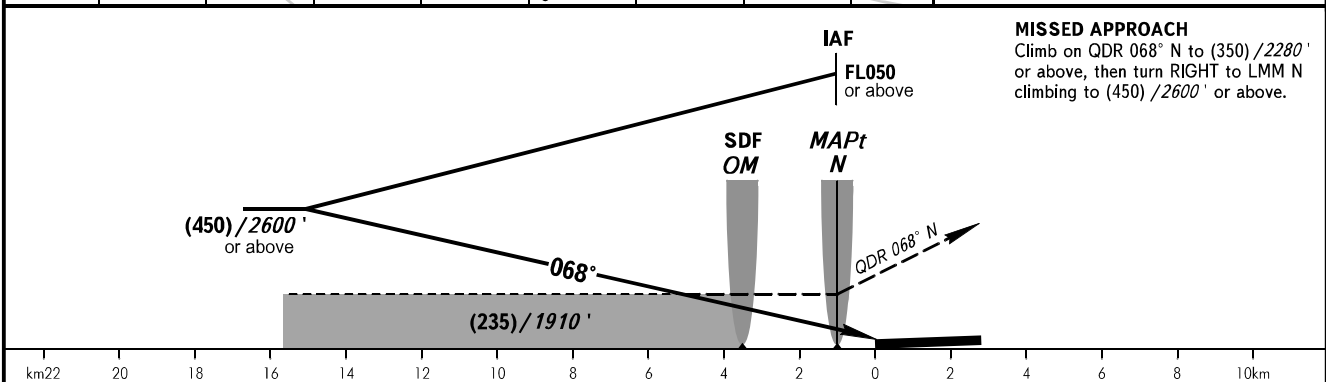
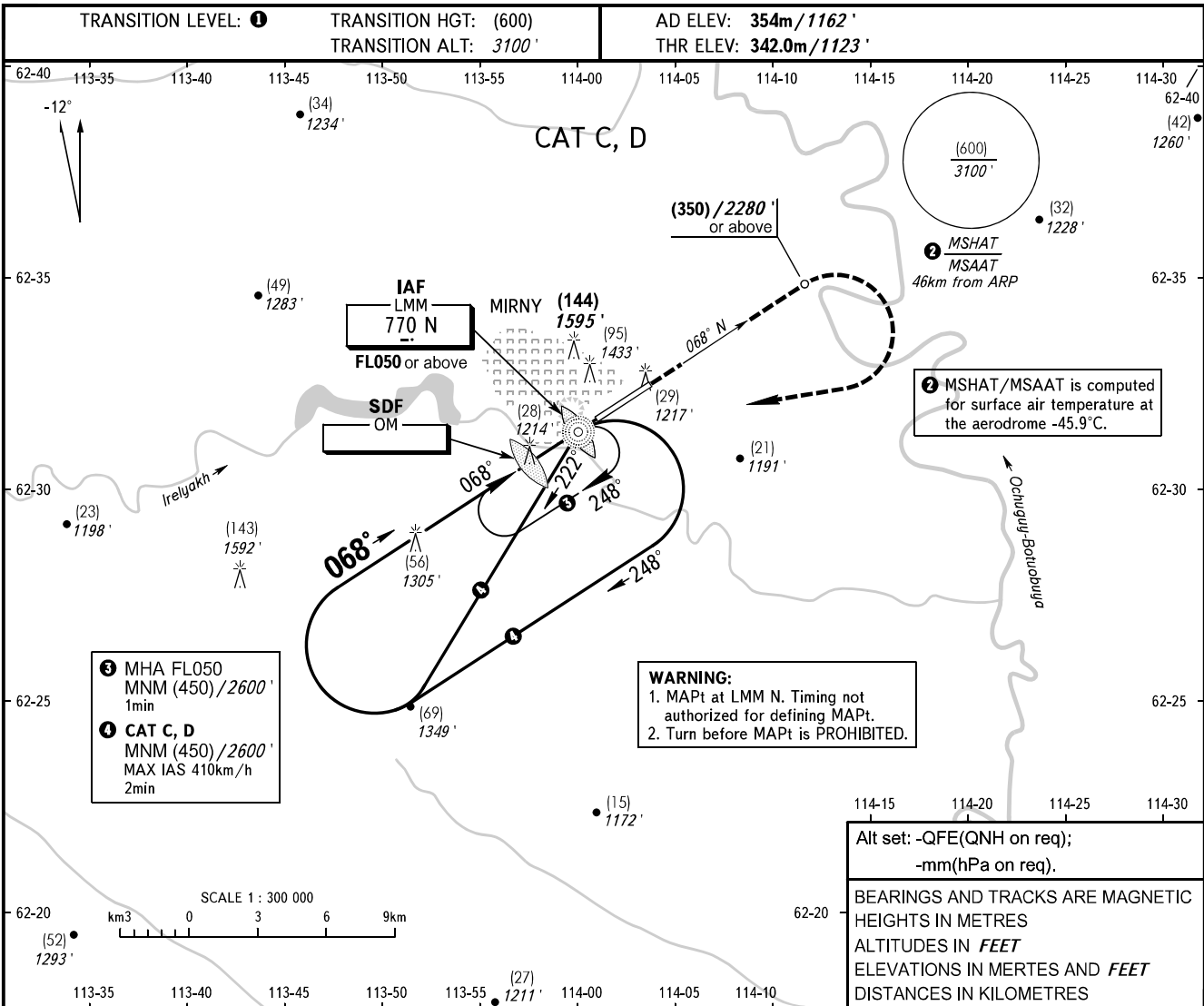


**INSTRUMENT
APPROACH
CHART - ICAO**

VYSHKA **125.900**
START **134.100**

MIRNY, RUSSIA
MIRNY
NDB V RWY 07



OCA(H)		A	B	C	D
Straight-in Approach	With SDF			470 (130) 1550' (430')	470 (130) 1550' (430')
	WO SDF			580 (235) 1910' (780')	580 (235) 1910' (780')
Circling				580 (225) 1910' (740')	580 (225) 1910' (740')

① TRANSITION LEVEL:
- FL050 when QFE is 728mm mercury column (970.6 hPa) or above;
- FL060 when QFE is 701mm mercury column (934.6 hPa) or above, but less than 728mm mercury column (970.6 hPa);
- FL070 when QFE is less than 701mm mercury column (934.6 hPa).

Circling approach north of AD is PROHIBITED.

CHANGE: New chart