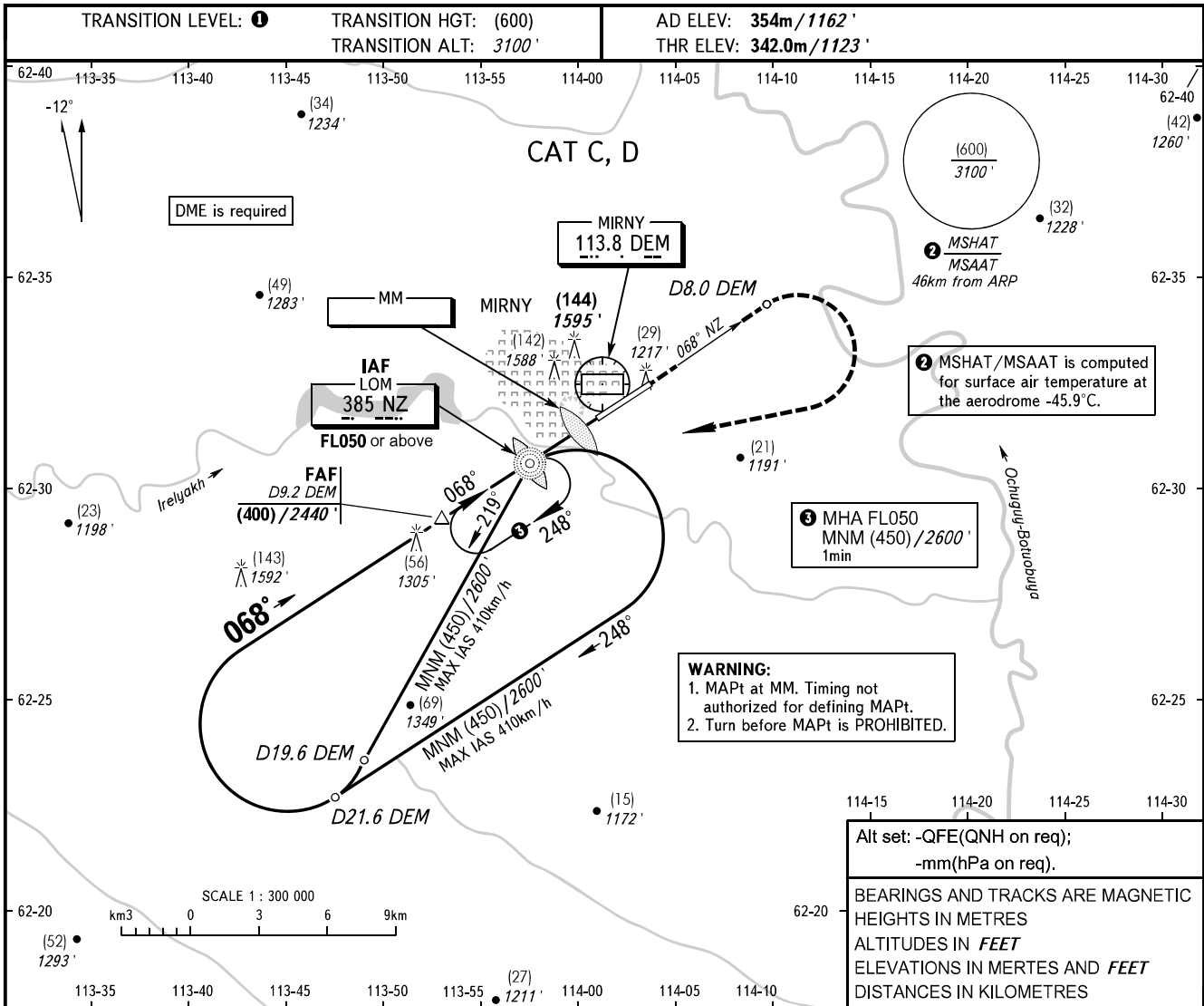


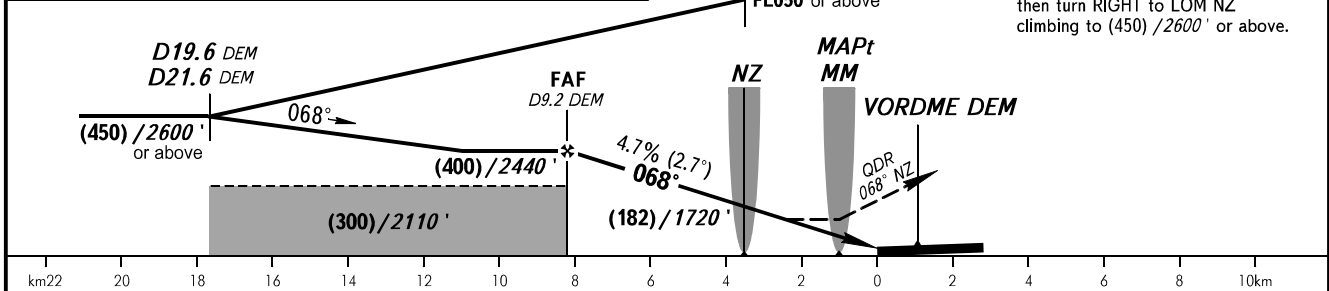
**INSTRUMENT
APPROACH
CHART - ICAO**

VYSHKA **125.900**
START **134.100**

MIRNY, RUSSIA
MIRNY
NDB X RWY 07



DME DEM	9.2	8.0	6.0	4.0
HEIGHT/ALTITUDE	(400)/2440'	(338)/2240'	(243)/1920'	(147)/1610'



OCA(H)		A	B	C	D
Straight-in Approach				505 (165) 1660' (550')	505 (165) 1660' (550')
Circling				535 (180) 1760' (600')	565 (210) 1850' (690')

① TRANSITION LEVEL:
- FL050 when QFE is 728mm mercury column (970.6 hPa) or above;
- FL060 when QFE is 701mm mercury column (934.6 hPa) or above, but less than 728mm mercury column (970.6 hPa);
- FL070 when QFE is less than 701mm mercury column (934.6 hPa).

Circling approach north of AD is PROHIBITED.

GROUND SPEED	km/h	150	180	210	240	270	300	330	360	390
	m/s	2.0	2.4	2.7	3.1	3.5	3.9	4.3	4.7	5.1
RATE OF DESCENT	ft/min	385	463	540	617	694	771	848	925	1102

CHANGE: New chart