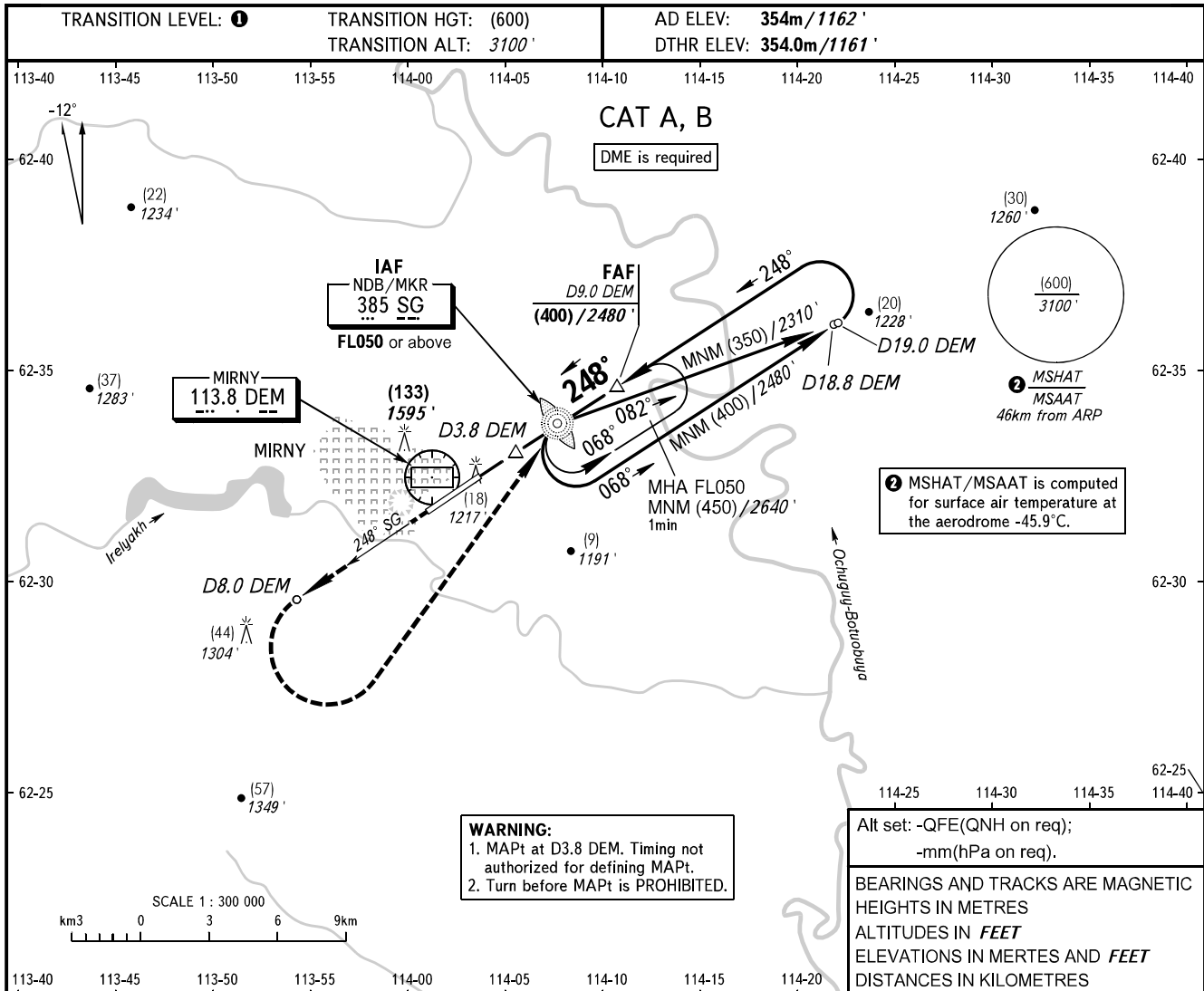


**INSTRUMENT
APPROACH
CHART - ICAO**

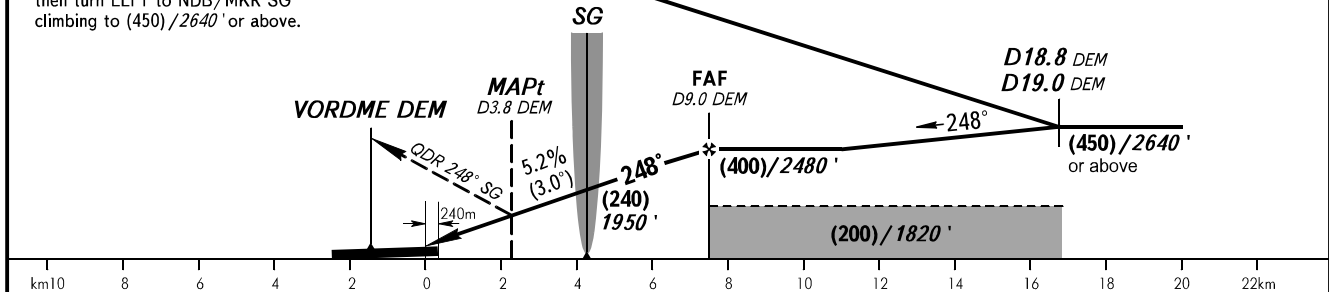
VYSHKA **125.900**
START **134.100**

MIRNY, RUSSIA
MIRNY
NDB Y RWY 25



MISSED APPROACH
Climb on QDR 248° SG to D8.0 DEM, then turn LEFT to NDB/MKR SG climbing to (450)/2640' or above.

DME DEM	4.0	6.0	8.0	9.0
HEIGHT/ALTITUDE	(135)/(1610')	(242)/(1960')	(347)/(2300')	(400)/(2480')



OCA(H)	A	B	C	D
Straight-in Approach	485 (130) 1600' (430')	485 (130) 1600' (430')		
Circling	485 (130) 1560' (400')	505 (150) 1660' (500')		

TRANSITION LEVEL:
- FL050 when QFE is 728mm mercury column (970.6 hPa) or above;
- FL060 when QFE is 701mm mercury column (934.6 hPa) or above, but less than 728mm mercury column (970.6 hPa);
- FL070 when QFE is less than 701mm mercury column (934.6 hPa).

Circling approach north of AD is PROHIBITED.

GROUND SPEED	km/h	150	180	210	240	270	300	330	360	390
RATE OF DESCENT	m/s	2.2	2.6	3.0	3.5	3.9	4.3	4.8	5.2	5.6
	ft/min	427	512	597	682	768	853	938	1024	1109