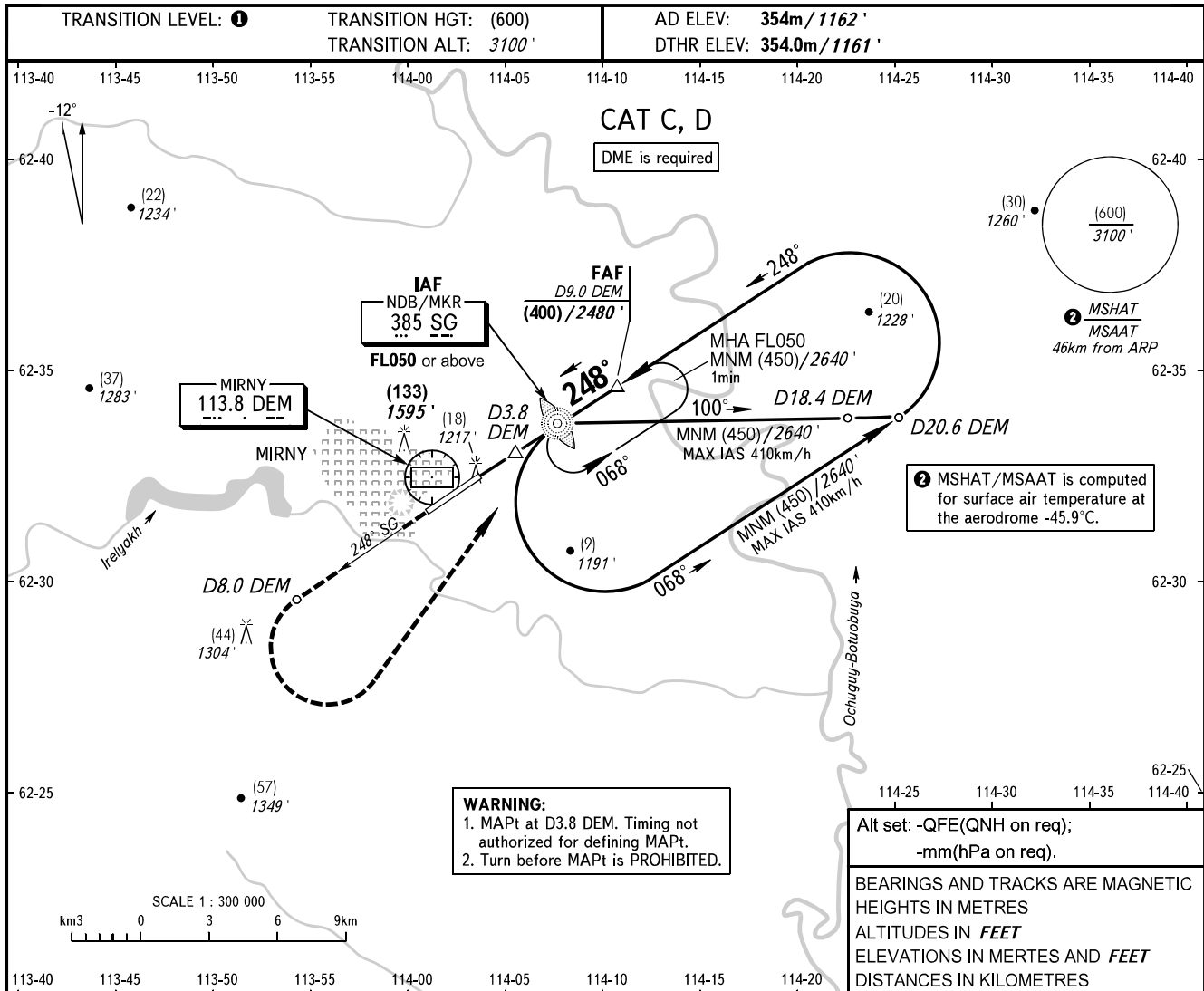


**INSTRUMENT  
APPROACH  
CHART - ICAO**

VYSHKA **125.900**  
START **134.100**

**MIRNY, RUSSIA**  
MIRNY  
NDB Z RWY 25



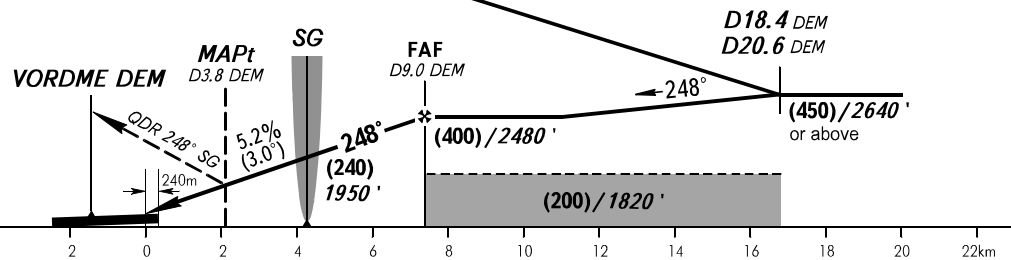
**WARNING:**  
1. MAPt at D3.8 DEM. Timing not authorized for defining MAPt.  
2. Turn before MAPt is PROHIBITED.

② MSHAT/MSAAT is computed for surface air temperature at the aerodrome -45.9°C.

Alt set: -QFE(QNH on req);  
-mm(hPa on req).  
BEARINGS AND TRACKS ARE MAGNETIC  
HEIGHTS IN METRES  
ALTITUDES IN FEET  
ELEVATIONS IN METRES AND FEET  
DISTANCES IN KILOMETRES

**MISSED APPROACH**  
Climb on QDR 248° SG to D8.0 DEM, then turn LEFT to NDB/MKR SG climbing to (450)/2640' or above.

IAF	DME DEM	4.0	6.0	8.0	9.0
FL050 or above	HEIGHT/ALTITUDE	(135)/1610'	(242)/1960'	(347)/2300'	(400)/2480'



OCA(H)	A	B	C	D
Straight-in Approach			485 (130) 1600' (430')	485 (130) 1600' (430')
Circling			535 (180) 1760' (600')	565 (210) 1850' (690')

① **TRANSITION LEVEL:**  
- FL050 when QFE is 728mm mercury column (970.6 hPa) or above;  
- FL060 when QFE is 701mm mercury column (934.6 hPa) or above, but less than 728mm mercury column (970.6 hPa);  
- FL070 when QFE is less than 701mm mercury column (934.6 hPa).  
Circling approach north of AD is PROHIBITED.

GROUND SPEED	km/h									
		150	180	210	240	270	300	330	360	390
RATE OF DESCENT	m/s									
		2.2	2.6	3.0	3.5	3.9	4.3	4.8	5.2	5.6
	фт / мин									
	427	512	597	682	768	853	938	1024	1109	