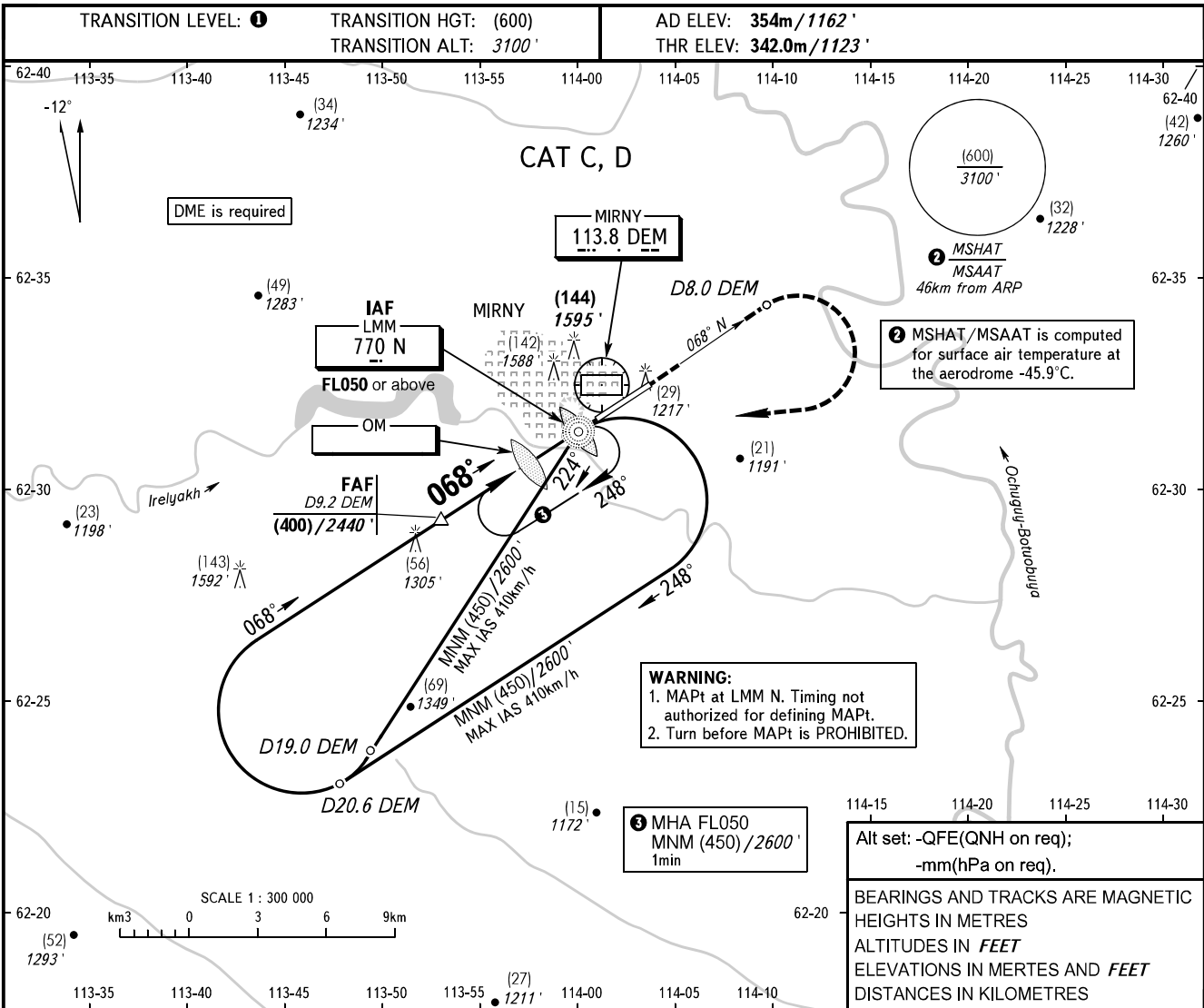


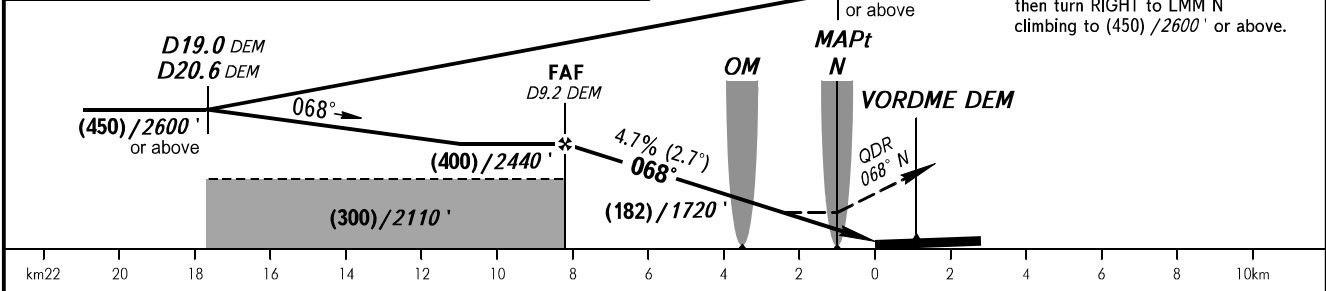
**INSTRUMENT  
APPROACH  
CHART - ICAO**

VYSHKA **125.900**  
START **134.100**

**MIRNY, RUSSIA**  
MIRNY  
NDB Z RWY 07



DME DEM	9.2	8.0	6.0	4.0
HEIGHT/ALTITUDE	(400)/2440'	(338)/2240'	(243)/1920'	(147)/1610'



OCA(H)	A	B	C	D
Straight-in			470 (130) 1550' (430')	470 (130) 1550' (430')
Approach				
Circling			535 (180) 1760' (600')	565 (210) 1860' (690')

**1** TRANSITION LEVEL:  
- FL050 when QFE is 728mm mercury column (970.6 hPa) or above;  
- FL060 when QFE is 701mm mercury column (934.6 hPa) or above, but less than 728mm mercury column (970.6 hPa);  
- FL070 when QFE is less than 701mm mercury column (934.6 hPa).  
Circling approach north of AD is PROHIBITED.

GROUND SPEED	km/h	150	180	210	240	270	300	330	360	390
RATE OF DESCENT	m/s	2.0	2.4	2.7	3.1	3.5	3.9	4.3	4.7	5.1
	ft/min	385	463	540	617	694	771	848	925	1102

CHANGE: New chart