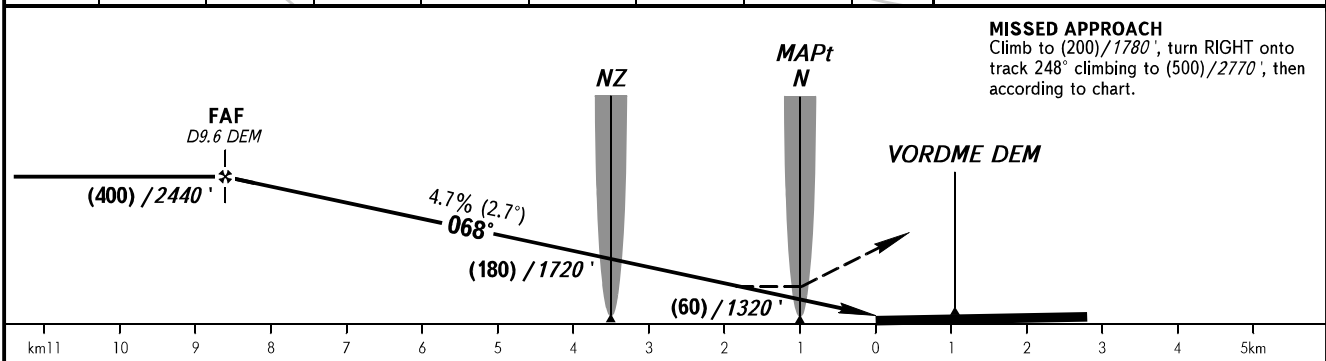
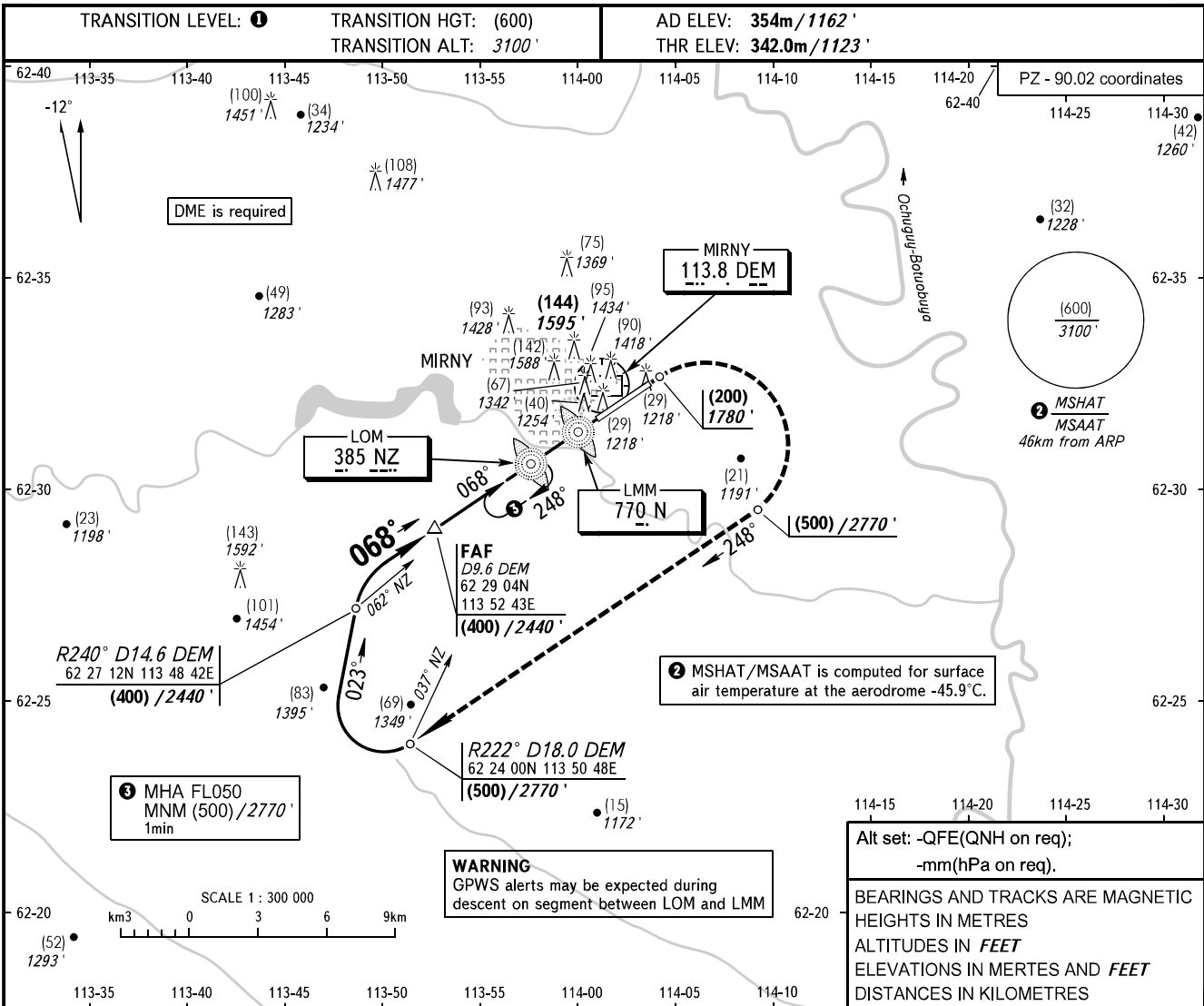


**INSTRUMENT
APPROACH
CHART - ICAO**

VYSHKA **125.900**
START **134.100**

MIRNY, RUSSIA
MIRNY
2 NDB RWY 07



OCA(H)		A	B	C	D	① TRANSITION LEVEL: - FL050 when QFE is 728mm mercury column (970.6 hPa) or above; - FL060 when QFE is 701mm mercury column (934.6 hPa) or above, but less than 728mm mercury column (970.6 hPa); - FL070 when QFE is less than 701mm mercury column (934.6 hPa).									
Straight-in Approach	With FAF	460(120) 1510' (400')	460(120) 1510' (400')	475(135) 1560' (430')	475(135) 1560' (430')	Circling approach north of AD is PROHIBITED.									
	WO FAF	640(295) 2100' (970')	640(295) 2100' (970')	640(295) 2100' (970')	640(295) 2100' (970')										
GROUND SPEED		km/h	150	180	210	240	270	300	330	360	390				
RATE OF DESCENT		m/s	2.0	2.4	2.7	3.1	3.5	3.9	4.3	4.7	5.1				
		ft/min	385	463	540	617	694	771	848	925	1102				

CHANGE: New chart