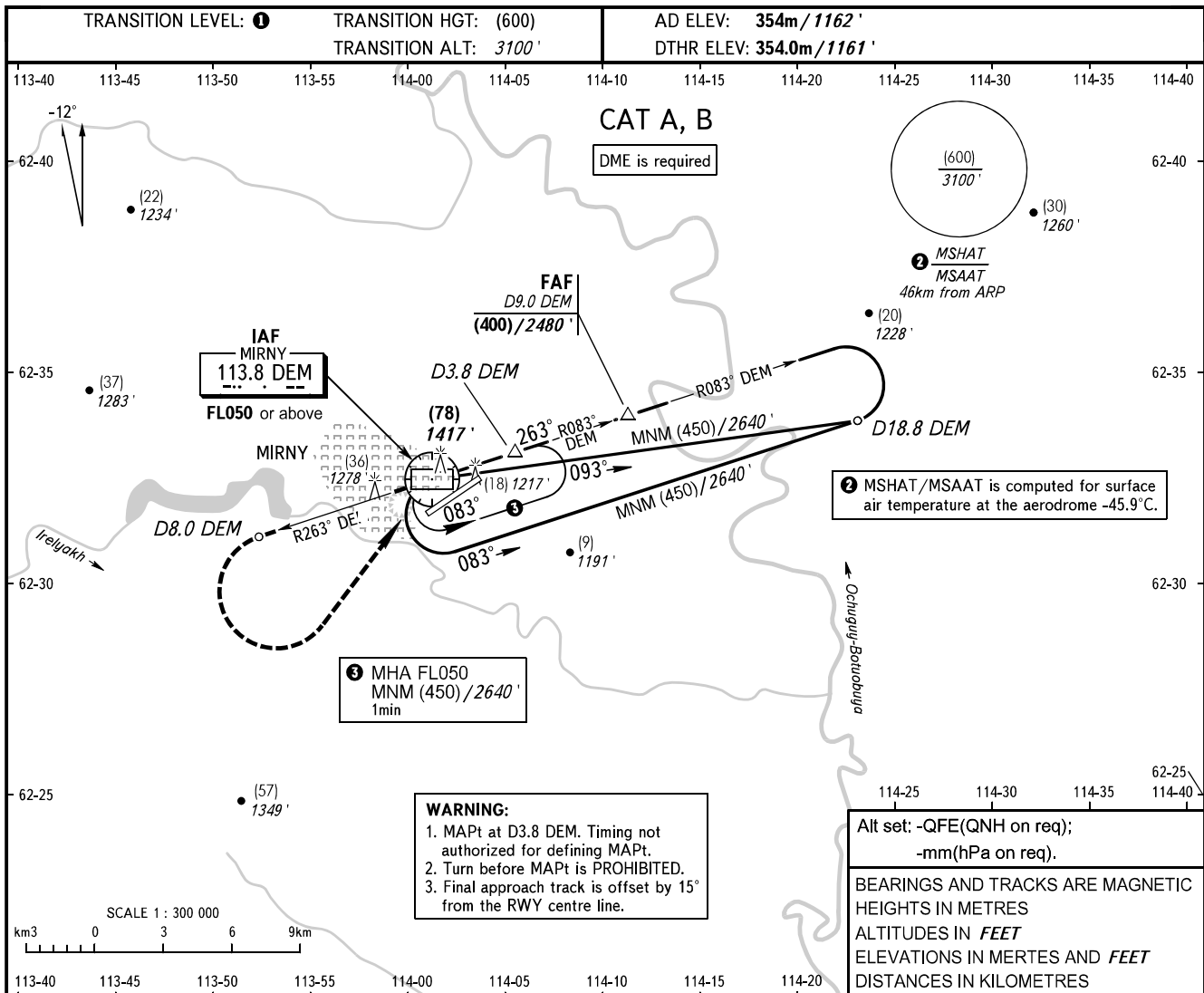


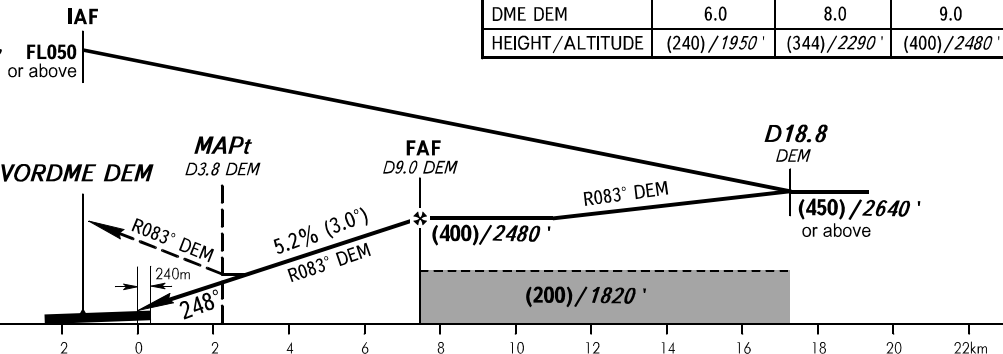
**INSTRUMENT  
APPROACH  
CHART - ICAO**

VYSHKA **125.900**  
START **134.100**

**MIRNY, RUSSIA**  
MIRNY  
VOR Y RWY 25



**MISSED APPROACH**  
Climb on R083° DEM to VORDME DEM, then on R263° DEM to D8.0 DEM, then turn LEFT to VORDME DEM climbing to (450)/2640' or above.



OCA(H)	A	B	C	D
Straight-in	510 (155) 1680' (510')	510 (155) 1680' (510')		
Approach				
Circling	510 (155) 1680' (510')	510 (155) 1680' (510')		

**① TRANSITION LEVEL:**  
- FL050 when QFE is 728mm mercury column (970.6 hPa) or above;  
- FL060 when QFE is 701mm mercury column (934.6 hPa) or above, but less than 728mm mercury column (970.6 hPa);  
- FL070 when QFE is less than 701mm mercury column (934.6 hPa).

Circling approach north of AD is PROHIBITED.

GROUND SPEED	km/h	150	180	210	240	270	300	330	360	390
	RATE OF DESCENT	m/s	2.2	2.6	3.0	3.5	3.9	4.3	4.8	5.2
	ft/min	427	512	597	682	768	853	938	1024	1109