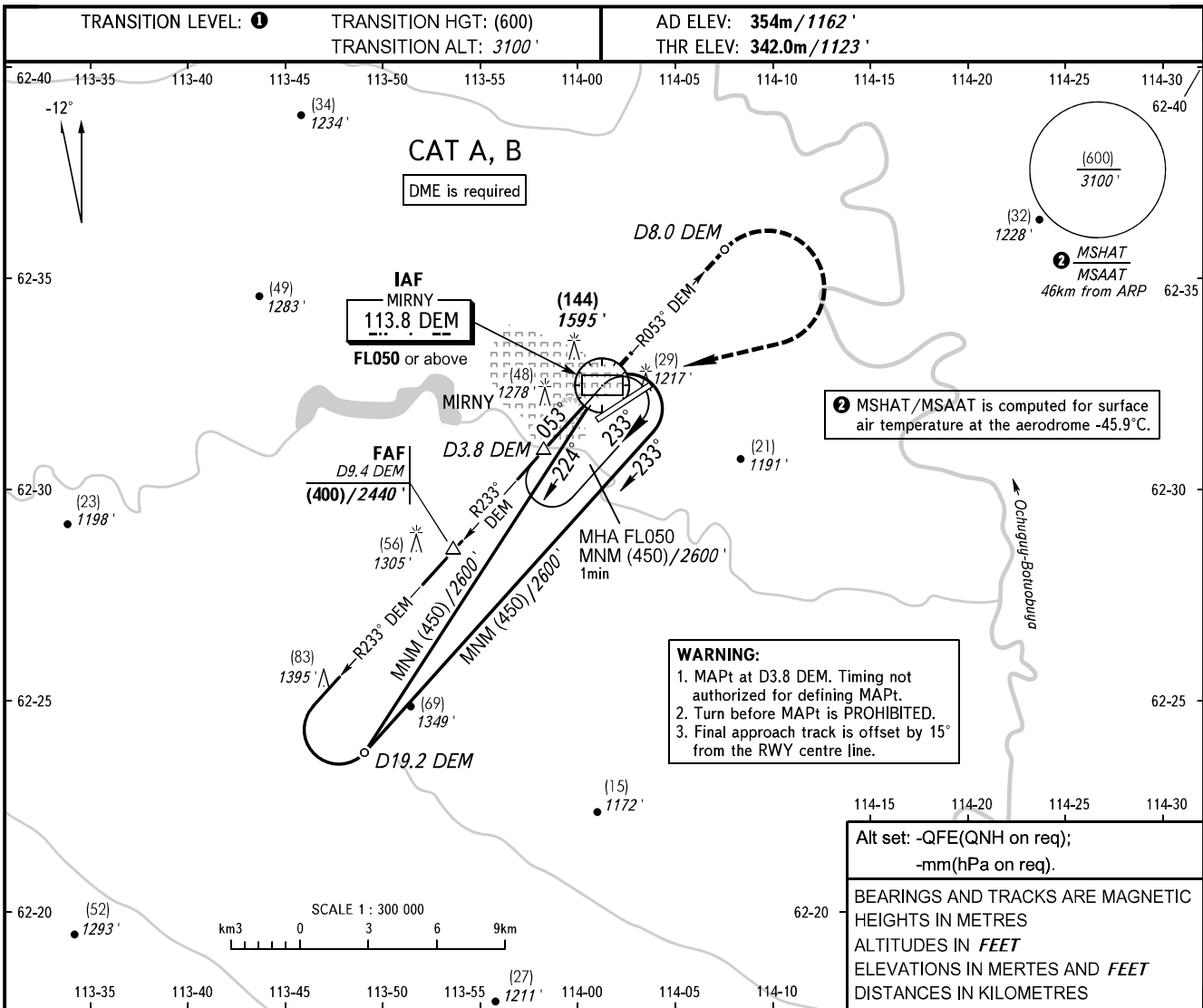


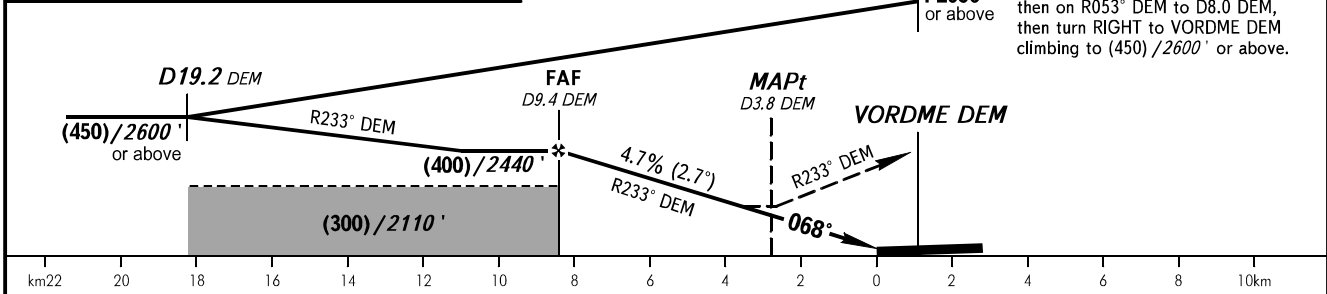
**INSTRUMENT
APPROACH
CHART - ICAO**

VYSHKA	125.900
START	134.100

MIRNY, RUSSIA
MIRNY
VOR Y RWY 07



DME DEM	9.4	8.0	6.0
HEIGHT/ALTITUDE	(400)/2440'	(335)/2230'	(241)/1920'



OCA(H)	A	B	C	D
Straight-in	505 (165) 1660' (530')	505 (165) 1660' (530')		
Approach				
Circling	505 (165) 1660' (530')	505 (165) 1660' (530')		

① **TRANSITION LEVEL:**
- FL050 when QFE is 728mm mercury column (970.6 hPa) or above;
- FL060 when QFE is 701mm mercury column (934.6 hPa) or above, but less than 728mm mercury column (970.6 hPa);
- FL070 when QFE is less than 701mm mercury column (934.6 hPa).

Circling approach north of AD is PROHIBITED.

GROUND SPEED	km/h	150	180	210	240	270	300	330	360	390
	m/s	2.0	2.4	2.7	3.1	3.5	3.9	4.3	4.7	5.1
RATE OF DESCENT	ft/min	385	463	540	617	694	771	848	925	1102

CHANGE: New chart