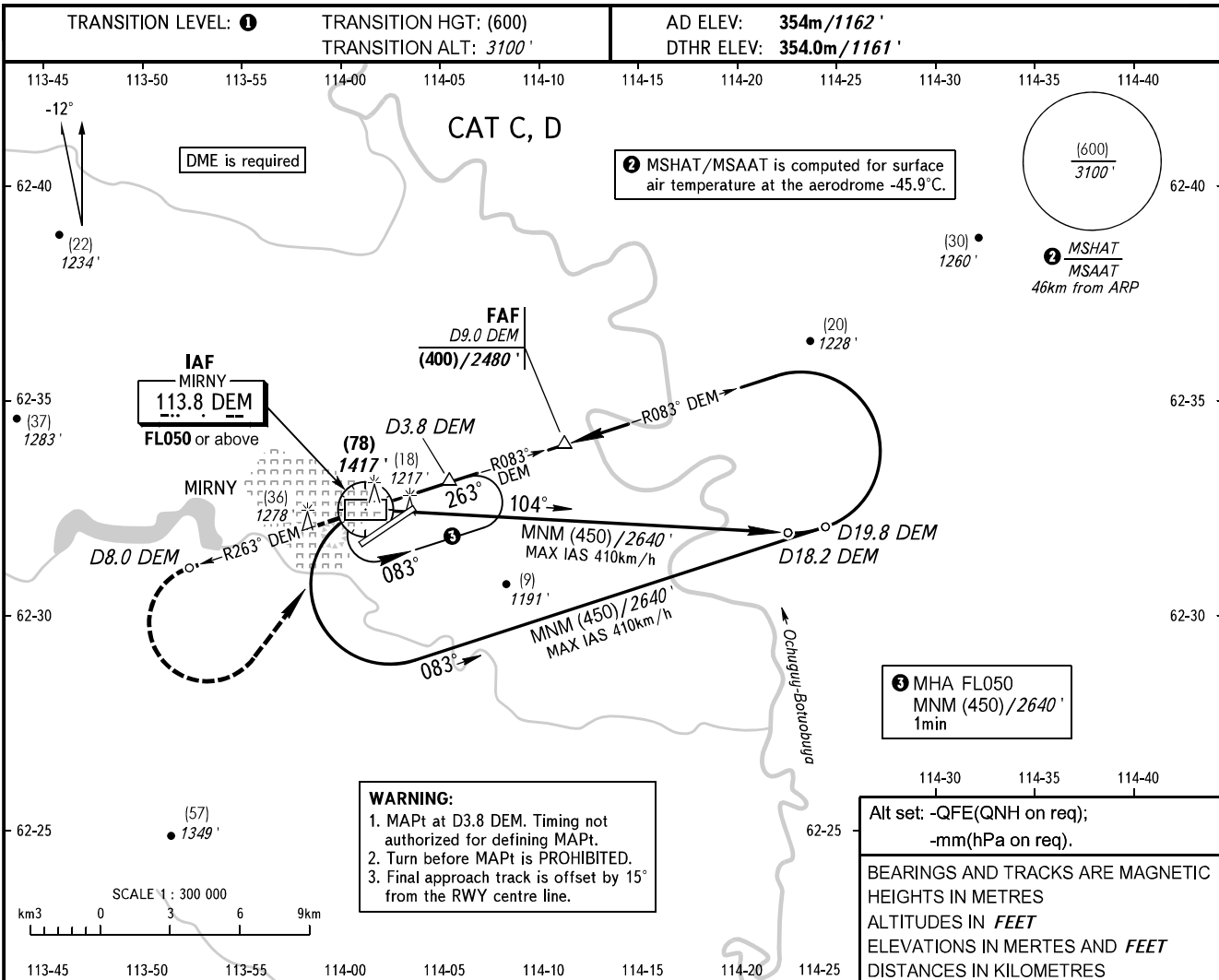


**INSTRUMENT
APPROACH
CHART - ICAO**

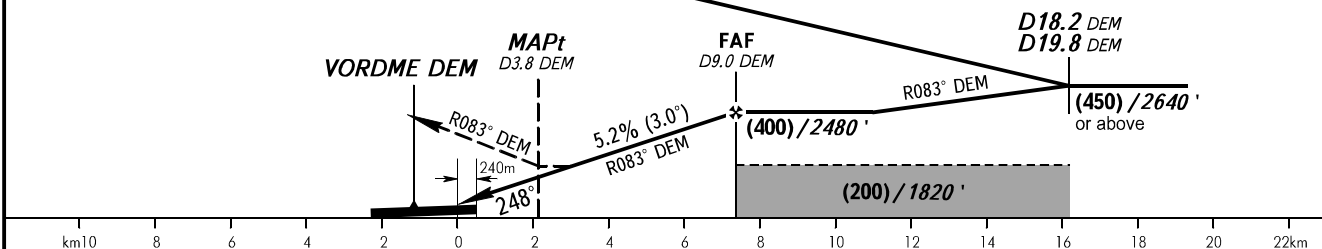
VYSHKA **125.900**
START **134.100**

MIRNY, RUSSIA
MIRNY
VOR Z RWY 25



MISSED APPROACH
Climb on R083° DEM to VORDME DEM, then on R263° DEM to D8.0 DEM, then turn LEFT to VORDME DEM climbing to (450)/2640' or above.

DME DEM	6.0	8.0	9.0
HEIGHT/ALTITUDE	(240)/1950'	(344)/2290'	(400)/2480'



OCA(H)	A	B	C	D
Straight-in Approach			510 (155) 1680' (510')	510 (155) 1680' (510')
Circling			535 (180) 1760' (600')	565 (210) 1860' (690')

① TRANSITION LEVEL:
- FLO50 when QFE is 728mm mercury column (970.6 hPa) or above;
- FLO60 when QFE is 701mm mercury column (934.6 hPa) or above, but less than 728mm mercury column (970.6 hPa);
- FLO70 when QFE is less than 701mm mercury column (934.6 hPa).

Circling approach north of AD is PROHIBITED.

GROUND SPEED	km/h	150	180	210	240	270	300	330	360	390
RATE OF DESCENT	m/s	2.2	2.6	3.0	3.5	3.9	4.3	4.8	5.2	5.6
	ft/min	427	512	597	682	768	853	938	1024	1109