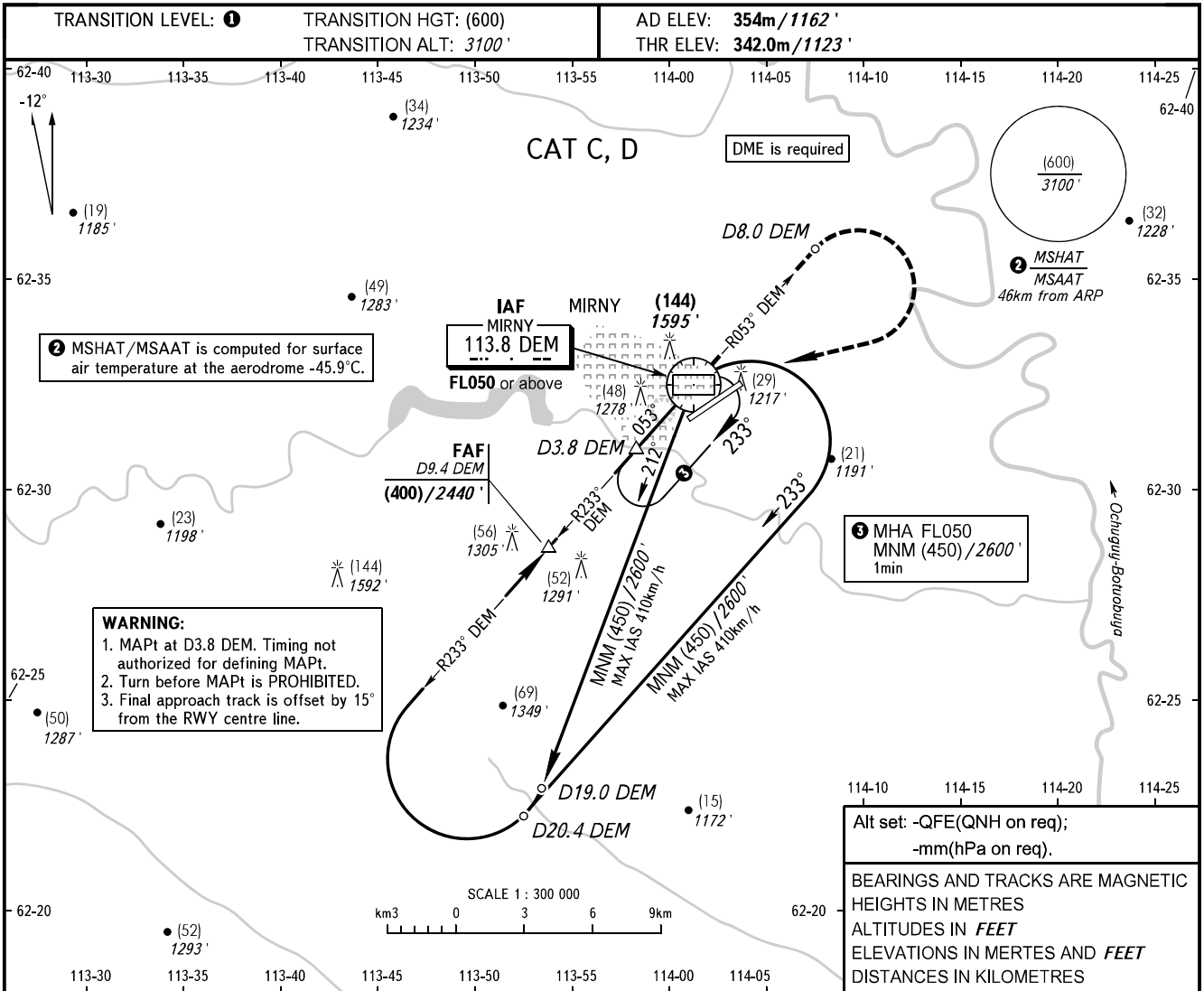


**INSTRUMENT
APPROACH
CHART - ICAO**

VYSHKA **125.900**
START **134.100**

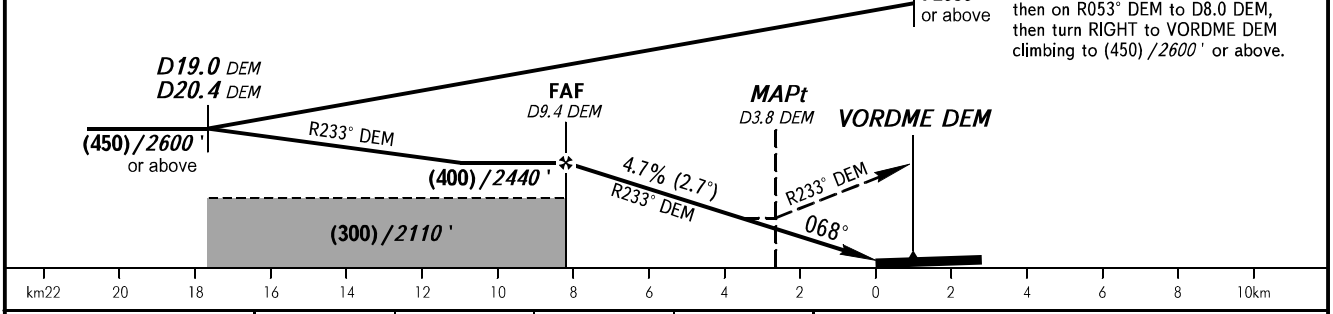
MIRNY, RUSSIA
MIRNY
VOR Z RWY 07



DME DEM	9.4	8.0	6.0
HEIGHT/ALTITUDE	(400)/2440'	(335)/2230'	(241)/1920'

Alt set: -QFE(QNH on req);
-mm(hPa on req).

BEARINGS AND TRACKS ARE MAGNETIC
HEIGHTS IN METRES
ALTITUDES IN FEET
ELEVATIONS IN METRES AND FEET
DISTANCES IN KILOMETRES



OCA(H)		A	B	C	D
Straight-in	Approach			505 (165) 1660' (530')	505 (165) 1660' (530')
	Circling			535 (180) 1760' (600')	565 (210) 1860' (690')

1 TRANSITION LEVEL:
- FL050 when QFE is 728mm mercury column (970.6 hPa) or above;
- FL060 when QFE is 701mm mercury column (934.6 hPa) or above, but less than 728mm mercury column (970.6 hPa);
- FL070 when QFE is less than 701mm mercury column (934.6 hPa).

Circling approach north of AD is PROHIBITED.

GROUND SPEED	km/h	150	180	210	240	270	300	330	360	390
RATE OF DESCENT	m/s	2.0	2.4	2.7	3.1	3.5	3.9	4.3	4.7	5.1
	ft/min	385	463	540	617	694	771	848	925	1102

CHANGE: New chart