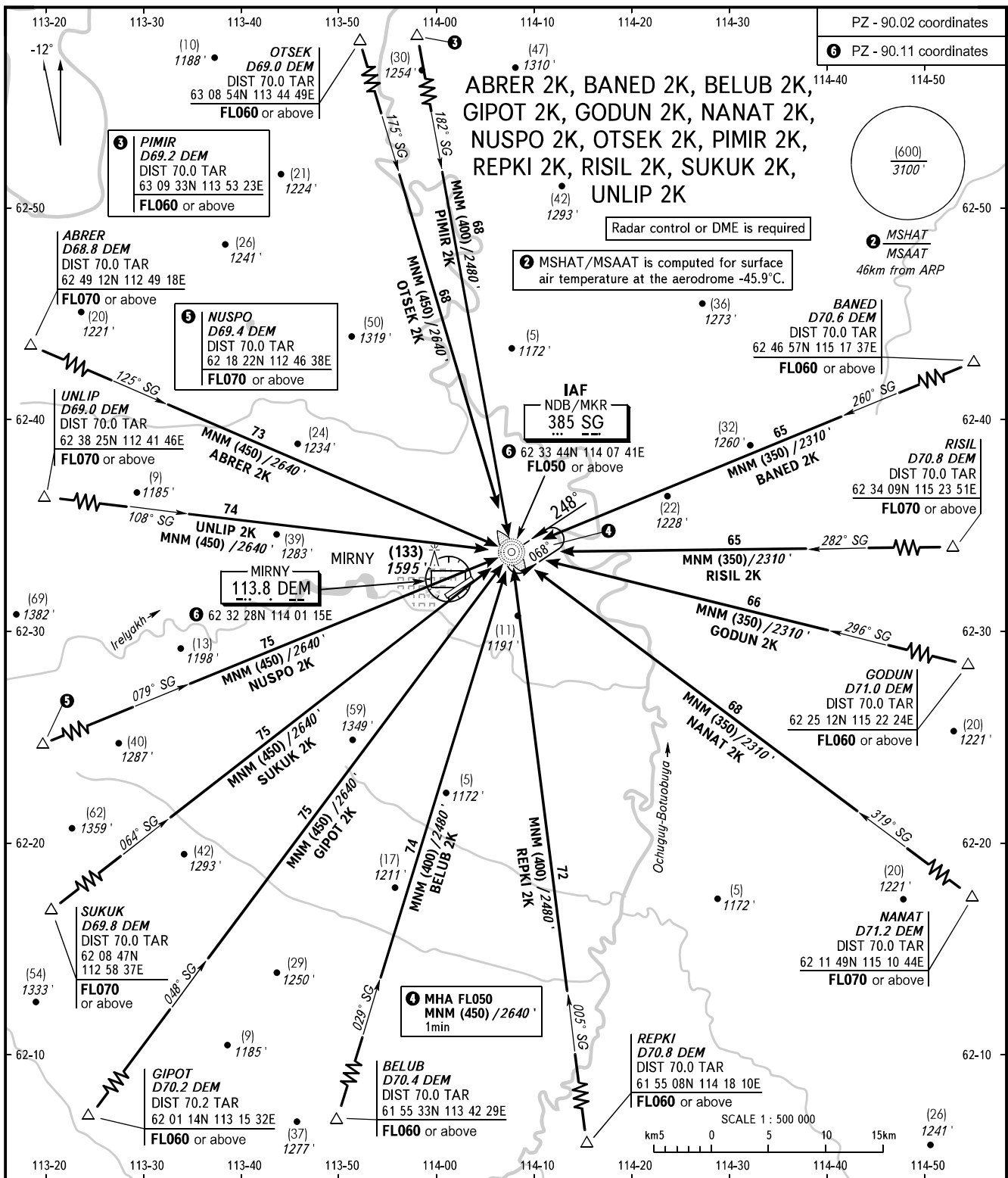


STANDARD ARRIVAL CHART  
INSTRUMENT (STAR) - ICAO

MIRNY, RUSSIA  
MIRNY  
RWY 25

TRANSITION  
LEVEL : 1



VYSHKA **125.900**  
START **134.100**

**1** TRANSITION LEVEL:  
- FL050 when QFE is 728mm mercury column (970.6 hPa) or above;  
- FL060 when QFE is 701mm mercury column (934.6 hPa) or above,  
but less than 728mm mercury column (970.6 hPa);  
- FL070 when QFE is less than 701mm mercury column (934.6 hPa).

BEARINGS AND TRACKS ARE MAGNETIC  
HEIGHTS IN METRES  
ALTITUDES IN FEET  
ELEVATIONS IN METRES AND FEET  
DISTANCES ARE IN KILOMETRES

Alt set: -QFE(QNH on req);  
-mm(hPa on req).