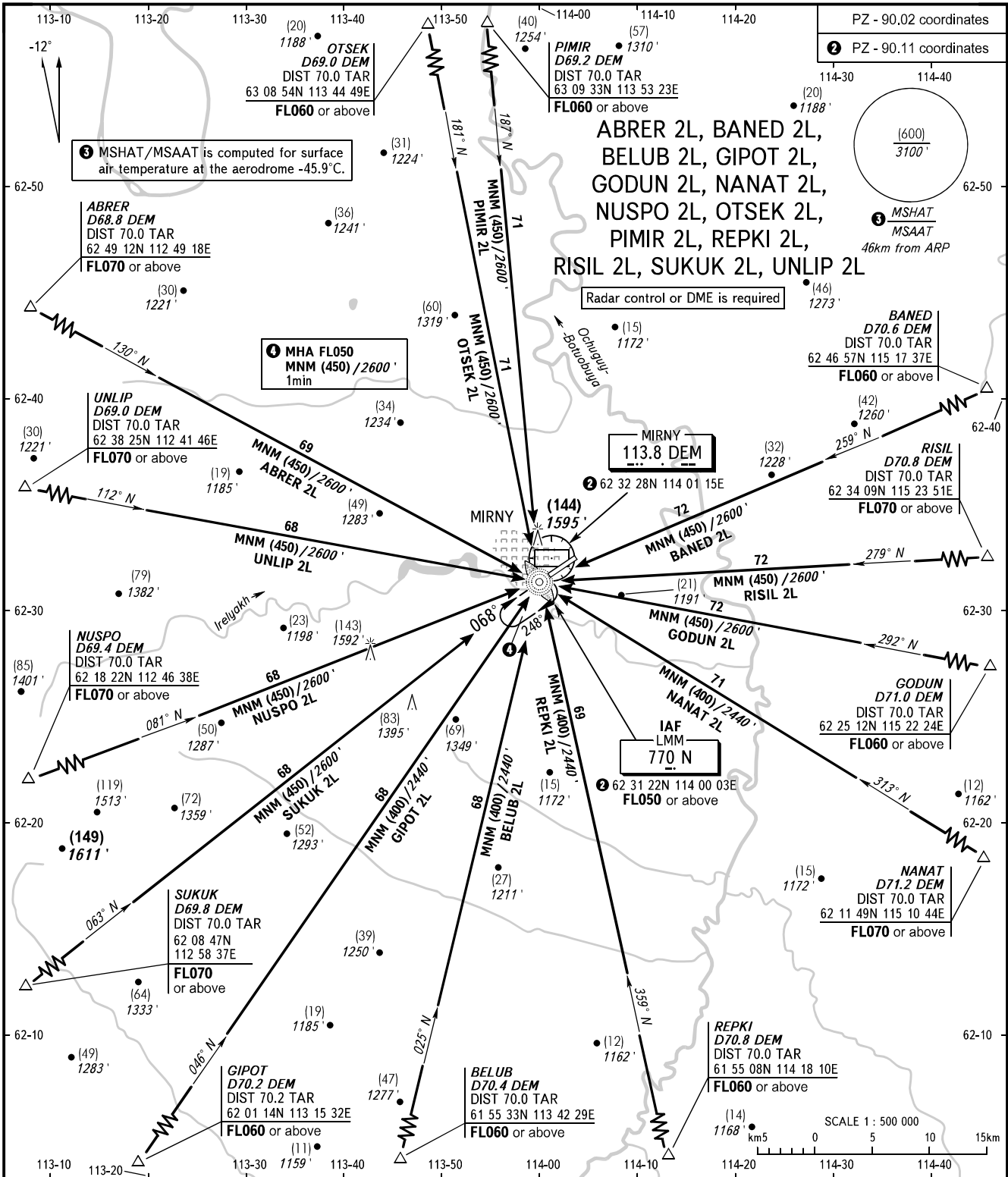


STANDARD ARRIVAL CHART
INSTRUMENT (STAR) - ICAO

MIRNY, RUSSIA
MIRNY
RWY 07

TRANSITION
LEVEL: 1



VYSHKA 125.900
START 134.100

- 1 TRANSITION LEVEL:
- FL050 when QFE is 728mm mercury column (970.6 hPa) or above;
 - FL060 when QFE is 701mm mercury column (934.6 hPa) or above, but less than 728mm mercury column (970.6 hPa);
 - FL070 when QFE is less than 701mm mercury column (934.6 hPa).

BEARINGS AND TRACKS ARE MAGNETIC
HEIGHTS IN METRES
ALTITUDES IN FEET
ELEVATIONS IN METRES AND FEET
DISTANCES ARE IN KILOMETRES

Alt set: -QFE(QNH on req);
-mm(hPa on req).

CHANGE: New chart