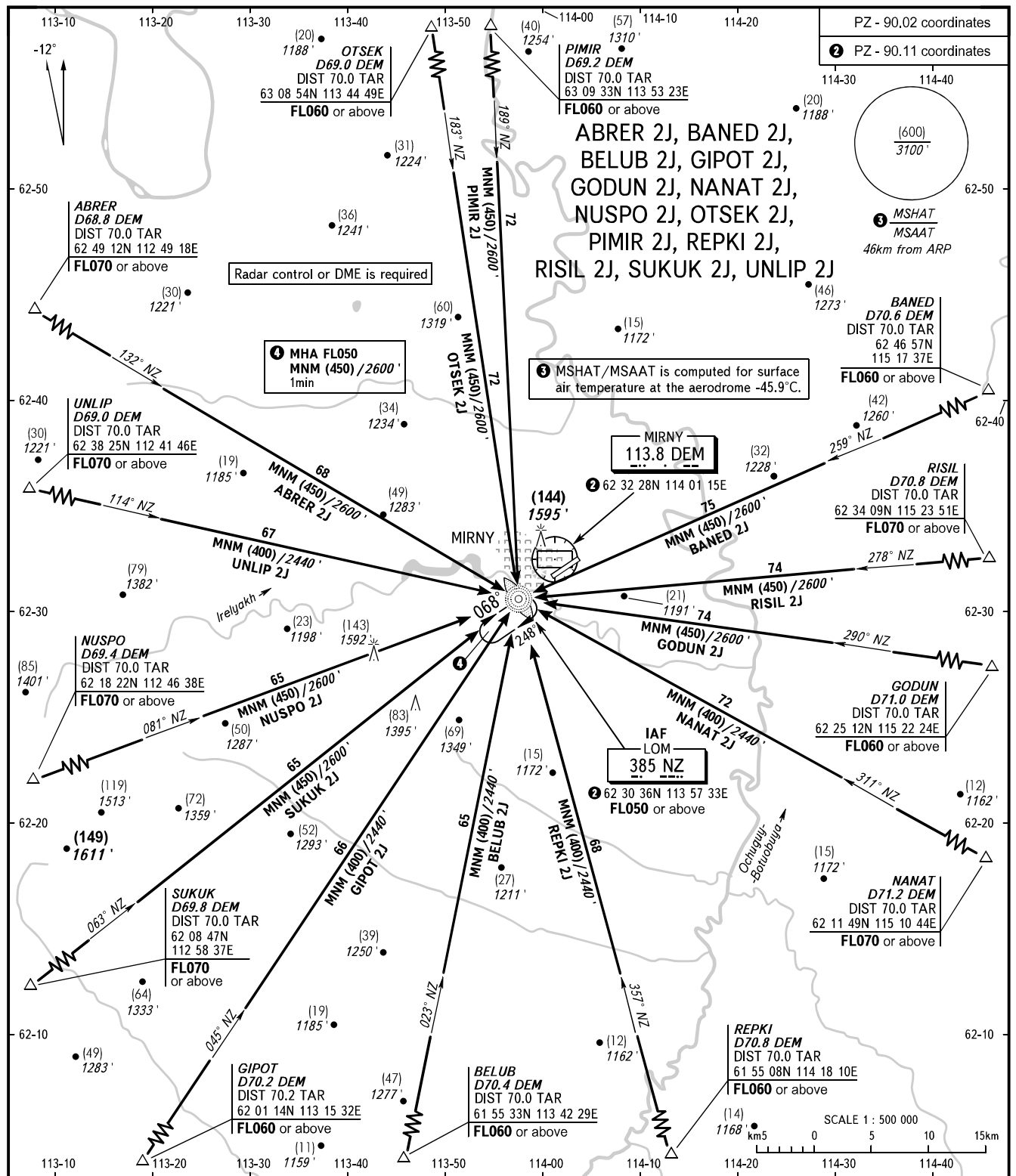


STANDARD ARRIVAL CHART
INSTRUMENT (STAR) - ICAO

MIRNY, RUSSIA
MIRNY
RWY 07

TRANSITION
LEVEL : ①



VYSHKA **125.900**
START **134.100**

- ① TRANSITION LEVEL:
- FL050 when QFE is 728mm mercury column (970.6 hPa) or above;
 - FL060 when QFE is 701mm mercury column (934.6 hPa) or above, but less than 728mm mercury column (970.6 hPa);
 - FL070 when QFE is less than 701mm mercury column (934.6 hPa).

BEARINGS AND TRACKS ARE MAGNETIC
HEIGHTS IN METRES
ALTITUDES IN **FEET**
ELEVATIONS IN METRES AND **FEET**
DISTANCES ARE IN KILOMETRES

Alt set: -QFE(QNH on req);
-mm(hPa on req).