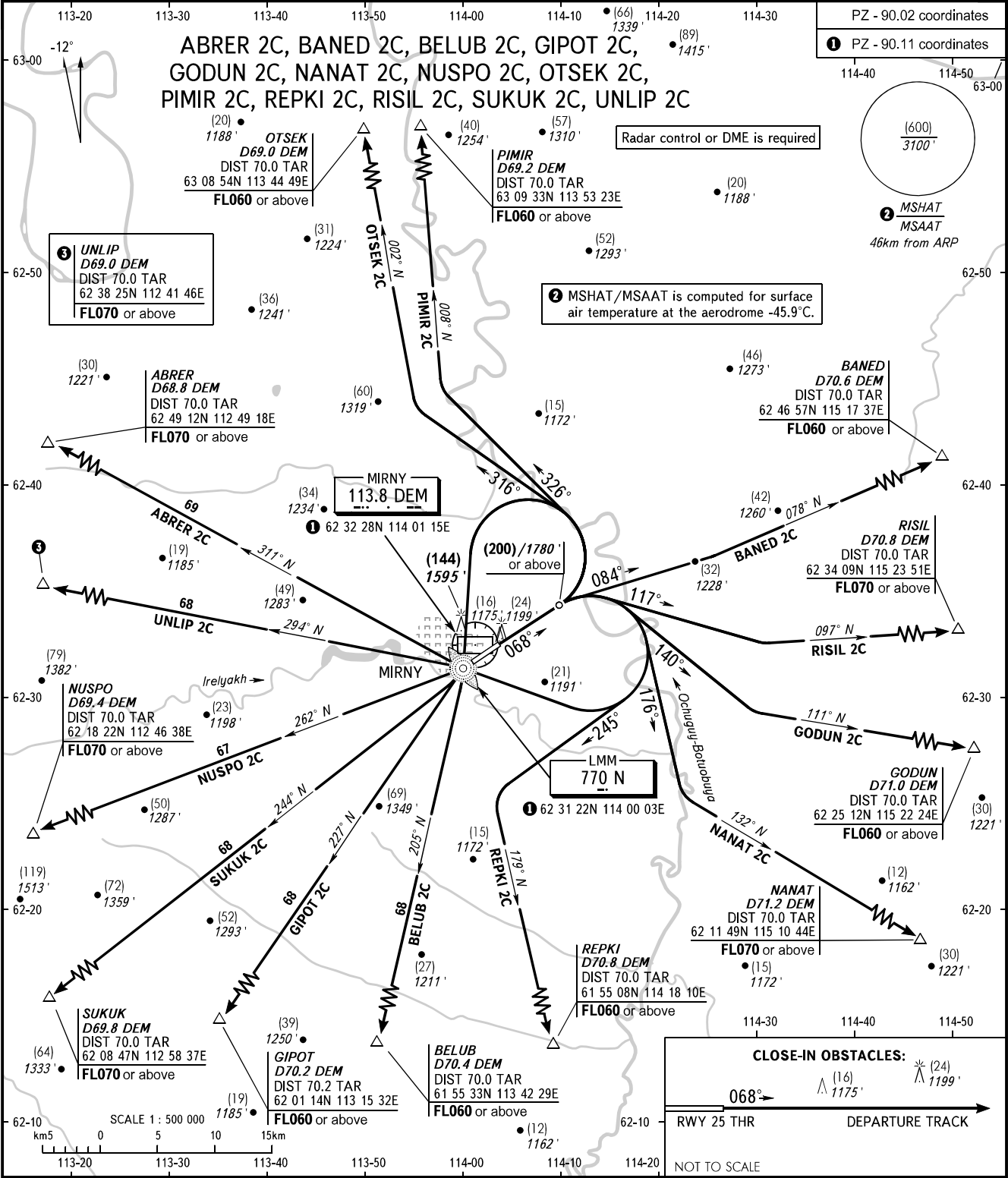


STANDARD DEPARTURE CHART
INSTRUMENT (SID) - ICAO

TRANSITION HGT: (600)
TRANSITION ALT: 3100'

MIRNY, RUSSIA
MIRNY
RWY 07



START 134.100
VYSHKA 125.900

WARNING
The minimum climb gradients required due to the airspace structure:
- 3.4% up to FL050 for NANAT 2C;
- 3.4% up to FL050 for OTSEK 2C;
- 3.5% up to FL050 for PIMIR 2C;
- 3.8% up to FL050 for GODUN 2C;
- 4.0% up to FL050 for RISIL 2C;
- 4.1% up to FL050 for BANED 2C.

BEARINGS AND TRACKS ARE MAGNETIC
HEIGHTS IN METRES
ALTITUDES IN FEET
ELEVATIONS IN METRES AND FEET
DISTANCES ARE IN KILOMETRES

Alt set: -QFE(QNH on req);
-mm(hPa on req).

CHANGE: New chart