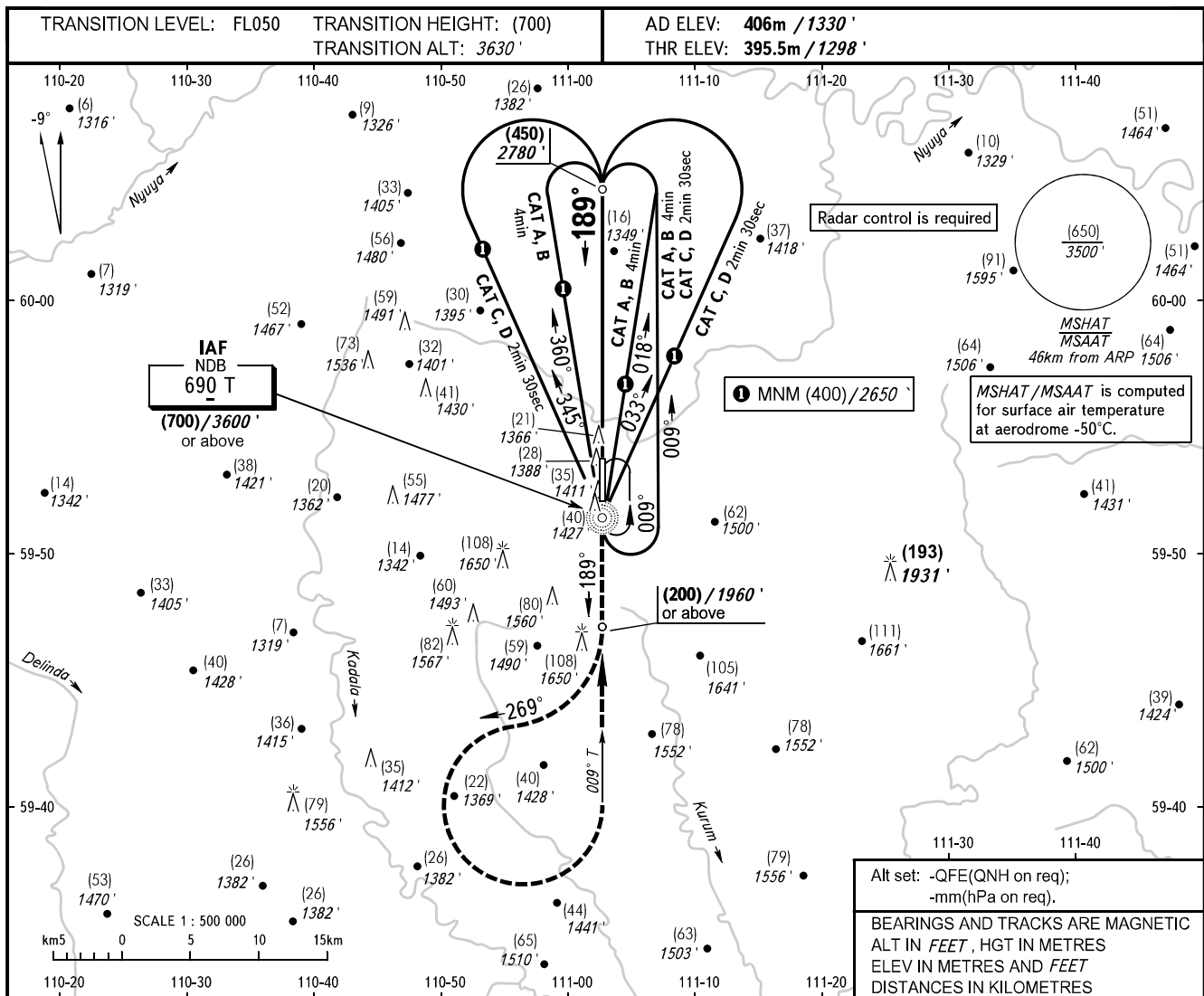


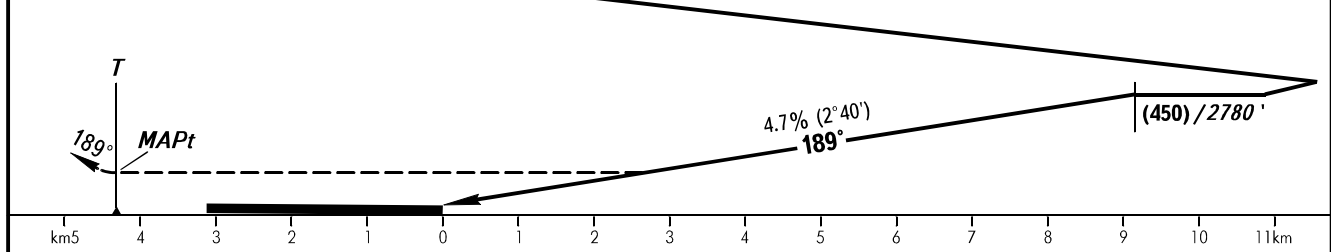
**INSTRUMENT
APPROACH
CHART - ICAO**

INFORMATSIYA 124.200

**TALAKAN, RUSSIA
TALAKAN
NDB RWY 19**



MISSED APPROACH:
Climb straight ahead to (200)/1960' or above, turn RIGHT onto track 269°, then turn LEFT onto QDM 009° T climbing to (450)/2780' or above (CAT A, B), (700)/3600' or above (CAT C, D) to NDB T, then proceed according to approach procedure or to the holding area reporting to ATS unit.



OCA(H)		A	B	C	D								
Straight-in Approach		530(135) 1740'	530(135) 1740'	530(135) 1740'	530(135) 1740'								
Circling		525(120) 1720'	525(120) 1720'	555(150) 1820'	630(225) 2070'								
GROUND SPEED		km/h	150	180	210	240	270	300	330	360	390	420	450
RATE OF DESCENT		m/s	1.9	2.3	2.7	3.1	3.5	3.9	4.3	4.7	5.0	5.4	5.8
		ft/min	374	453	531	610	689	768	846	925	984	1063	1142