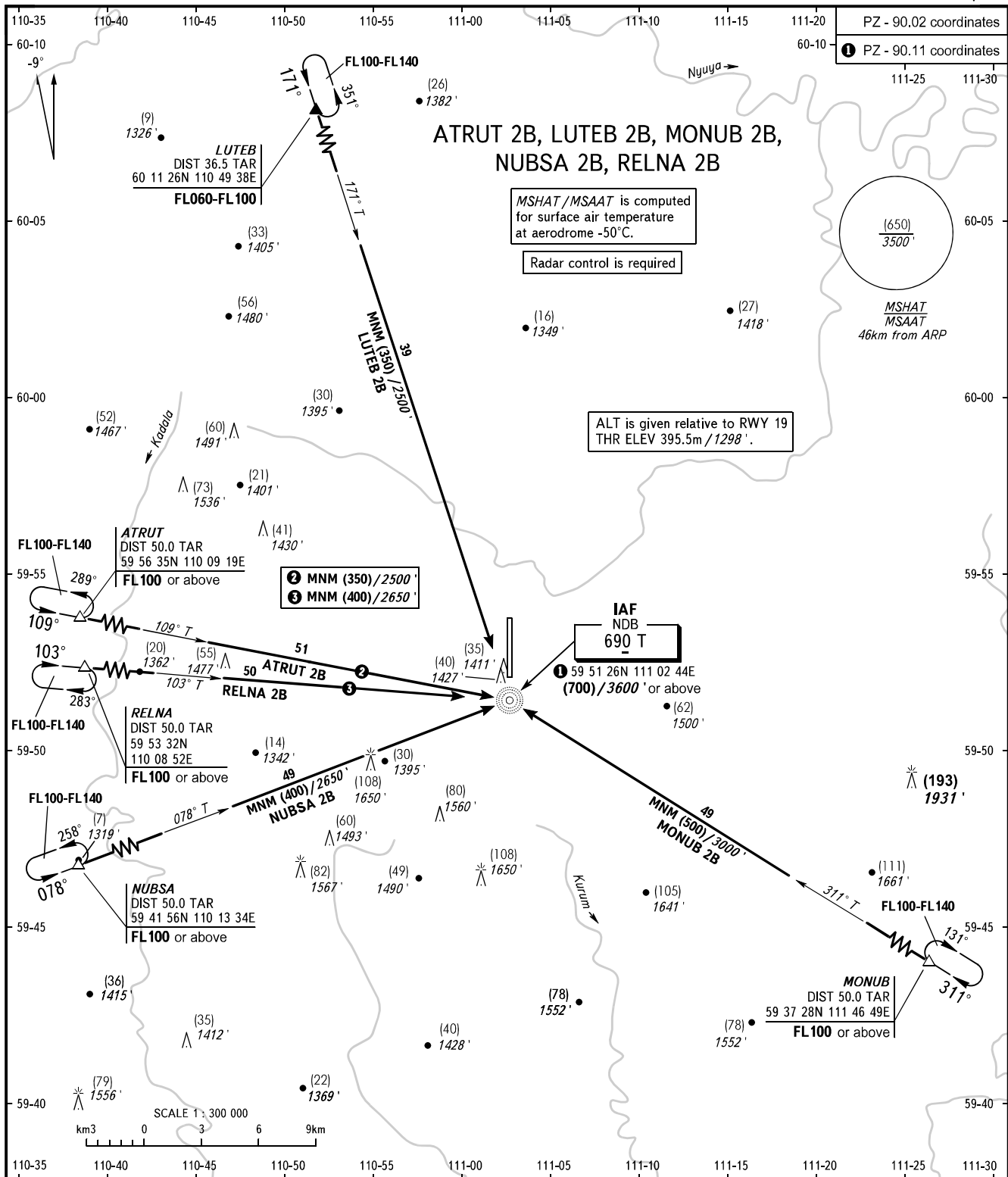


STANDART ARRIVAL CHART  
INSTRUMENT (STAR) - ICAO

TALAKAN, RUSSIA  
TALAKAN  
RWY 01/19

TRANSITION  
LEVEL: **FL050**



INFORMATSIYA 124.200

**WARNING**  
 During IFR flights in Talakan terminal area ACFT descent below FL100 shall be carried out only after obtaining the information about absence of other ACFT carrying out IFR flights in Talakan terminal area.

BEARINGS AND TRACKS ARE MAGNETIC  
 ALTITUDES IN FEET, HEIGHTS IN METRES  
 ELEVATIONS IN METRES AND FEET  
 DISTANCES IN KILOMETRES

Alt set: -QFE(QNH on req);  
 -mm(hPa on req).