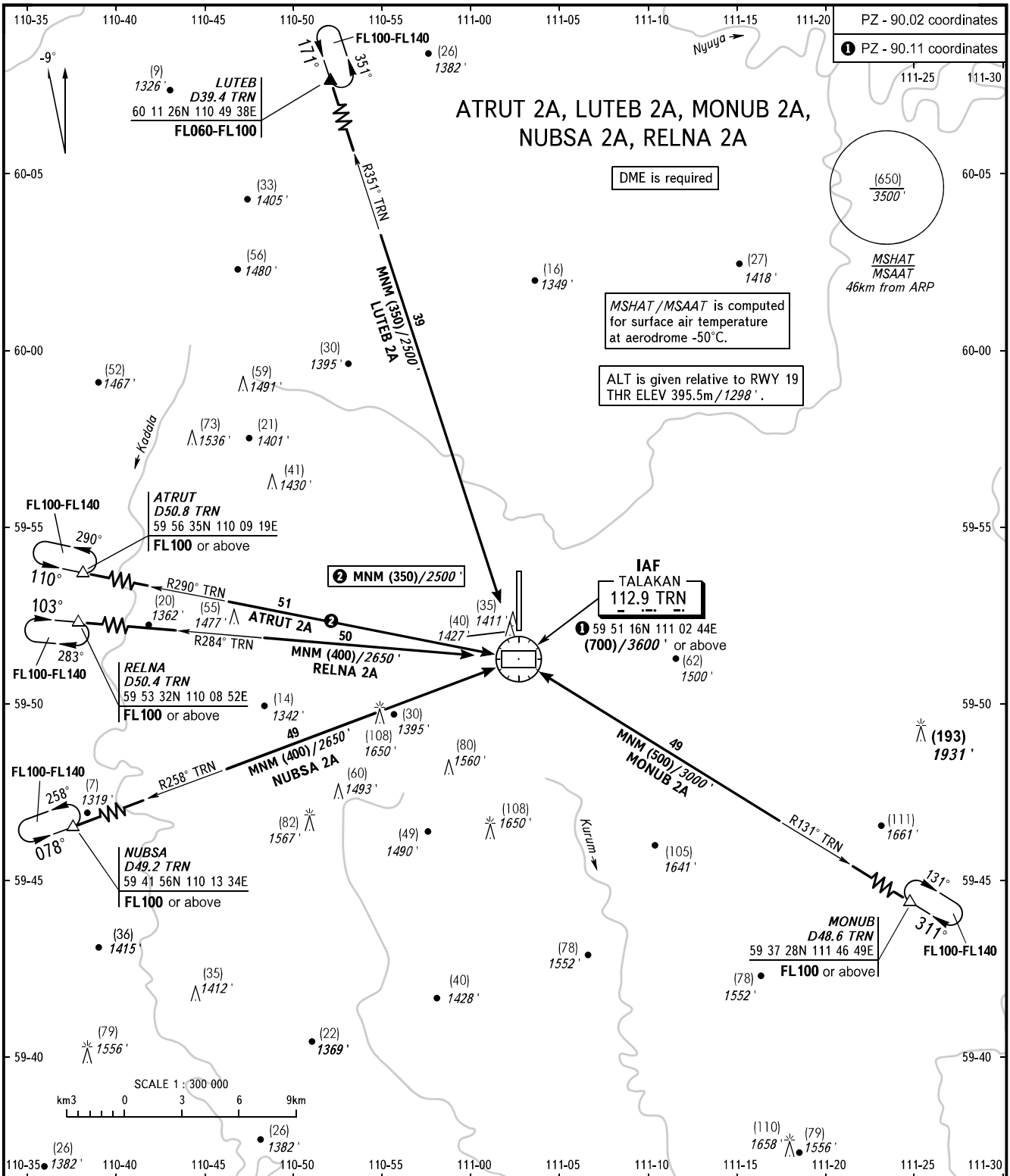


STANDART ARRIVAL CHART
INSTRUMENT (STAR) - ICAO

TRANSITION
LEVEL: FL050

TALAKAN, RUSSIA
TALAKAN
RWY 01/19



WARNING
During IFR flights in Talakan terminal area ACFT descent below FL100 shall be carried out only after obtaining the information about absence of other ACFT carrying out IFR flights in Talakan terminal area.

BEARINGS AND TRACKS ARE MAGNETIC
ALTITUDES IN FEET, HEIGHTS IN METRES
ELEVATIONS IN METRES AND FEET
DISTANCES IN KILOMETRES

Alt set: -QFE(QNH on req);
-mm(hPa on req).

CHANGE: New chart