

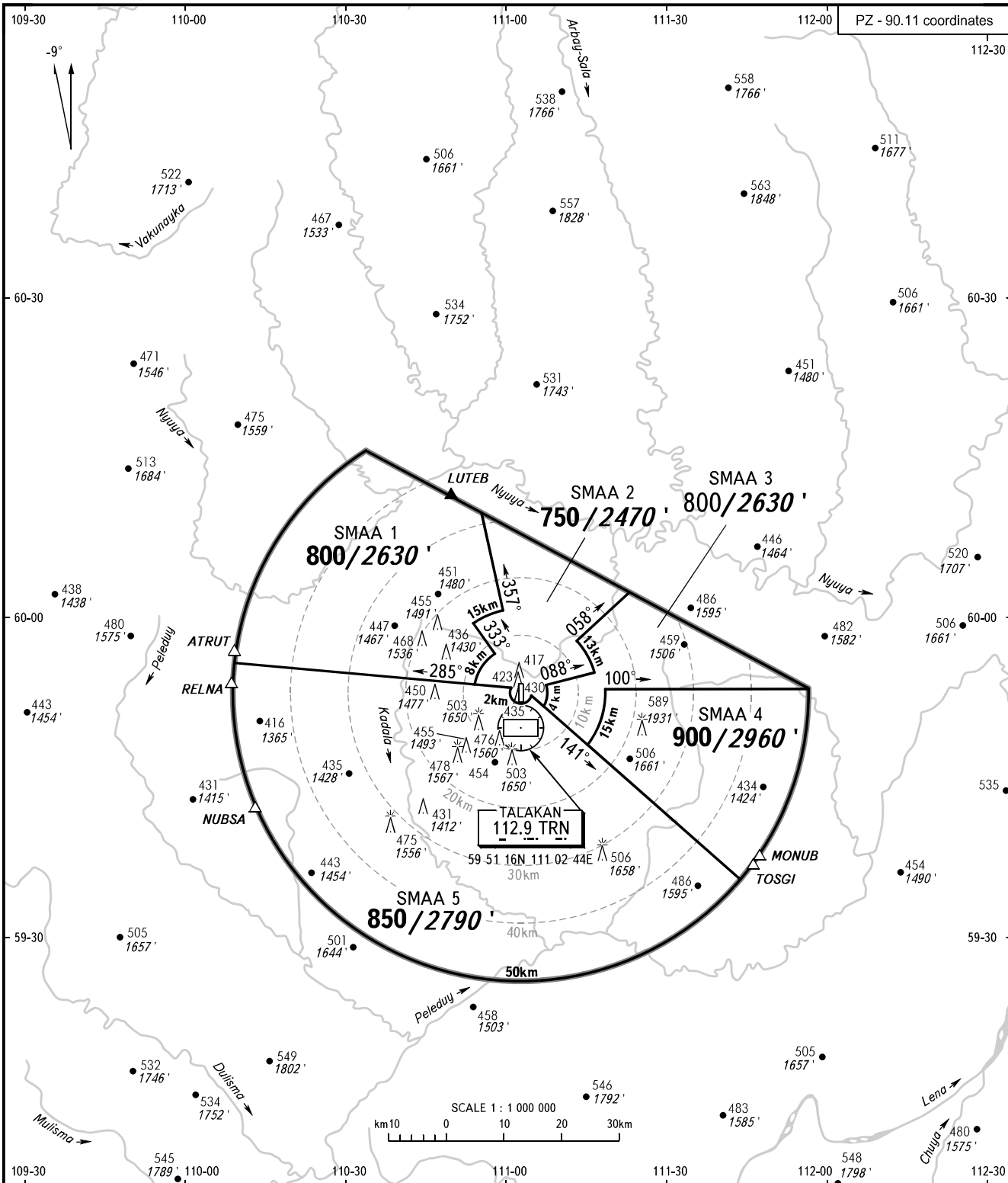
ATC SURVEILLANCE MINIMUM
ALTITUDE CHART- ICAO

ELEV
406m/1330'

TRANSITION HGT : (700)
TRANSITION ALT : 3630'

TALAKAN, RUSSIA

TALAKAN



INFORMATSIYA 124.200

WARNING:
 1. When vectoring is carried out under low-temperature conditions, the minimum vectoring altitudes must be corrected by altimeter temperature correction.
 2. The chart may only be used for cross-checking of assigned vectoring altitudes.
 3. In case of radio communication failure proceed in accordance with procedures described in AIP.

BEARINGS AND TRACKS ARE MAGNETIC
ALTITUDES IN FEET, HEIGHTS IN METRES
ELEVATIONS IN METRES AND FEET
DISTANCES IN KILOMETRES

Alt set: -QFE(QNH on req);
-mm(hPa on req).

CHANGE: New chart

TALAKAN, RUSSIA

TALAKAN

SURVEILLANCE MINIMUM ALTITUDE AREAS		
IDENT	MNM ALT, (m)	LATERAL LIMITS (PZ-90.11 coordinates)
SMAA 1	800 m 2630 ft	595729N 1100953E, then clockwise by arc of a circle radius of 50 KM centred at 595255N 1110244E to 601529N 1103322E - 600956N 1105516E - 600048N 1105918E, then anticlockwise by arc of a circle radius of 15 KM centred at 595255N 1110244E to 595941N 1105358E -595631N 1105803E, then anticlockwise by arc of a circle radius of 8 KM centred at 595255N 1110244E to 595340N 1105417E - 595729N 1100953E.
SMAA 2	750 m 2470 ft	600956N 1105516E - 600223N 1112315E - 595740N 1111300E, then clockwise by arc of a circle radius of 13 KM centred at 595255N 1110244E to 595446N 1111611E - 595329N 1110652E, then clockwise by arc of a circle radius of 4 KM centred at 595255N 1110244E to 595135N 1110606E - 595215N 1110425E, then clockwise by arc of a circle radius of 2 km centred at 595255N 1110244E to 595306N 1110037E - 595340N 1105417E, then clockwise by arc of a circle radius of 8 KM centred at 595255N 1110244E to 595631N 1105803E - 595941N 1105358E, then clockwise by arc of a circle radius of 15 KM centred at 595255N 1110244E to 600048N 1105918E - 600956N 1105516E.
SMAA 3	800 m 2630 ft	600223N 1112315E - 595314N 1115619E - 595303N 1111848E, then clockwise by arc of a circle radius of 15 KM centred at 595255N 1110244E to 594755N 1111521E - 595135N 1110606E, then anticlockwise by arc of a circle radius of 4 KM centred at 595255N 1110244E to 595329N 1110652E - 595446N 1111611E, then anticlockwise by arc of a circle radius of 13 KM centred at 595255N 1110244E to 595740N 1111300E - 600223N 1112315E.
SMAA 4	900 m 2960 ft	595314N 1115619E, then clockwise by arc of a circle radius of 50 KM centred at 595255N 1110244E to 593612N 1114435E - 594755N 1111521E, then anticlockwise by arc of a circle radius of 15 KM centred at 595255N 1110244E to 595303N 1111848E - 595314N 1115619E.
SMAA 5	850 m 2790 ft	593612N 1114435E, then clockwise by arc of a circle radius of 50 KM centred at 595255N 1110244E to 595729N 1100953E - 595306N 1110037E, then anticlockwise by arc of a circle radius of 2 KM centred at 595255N 1110244E to 595215N 1110425E - 593612N 1114435E.