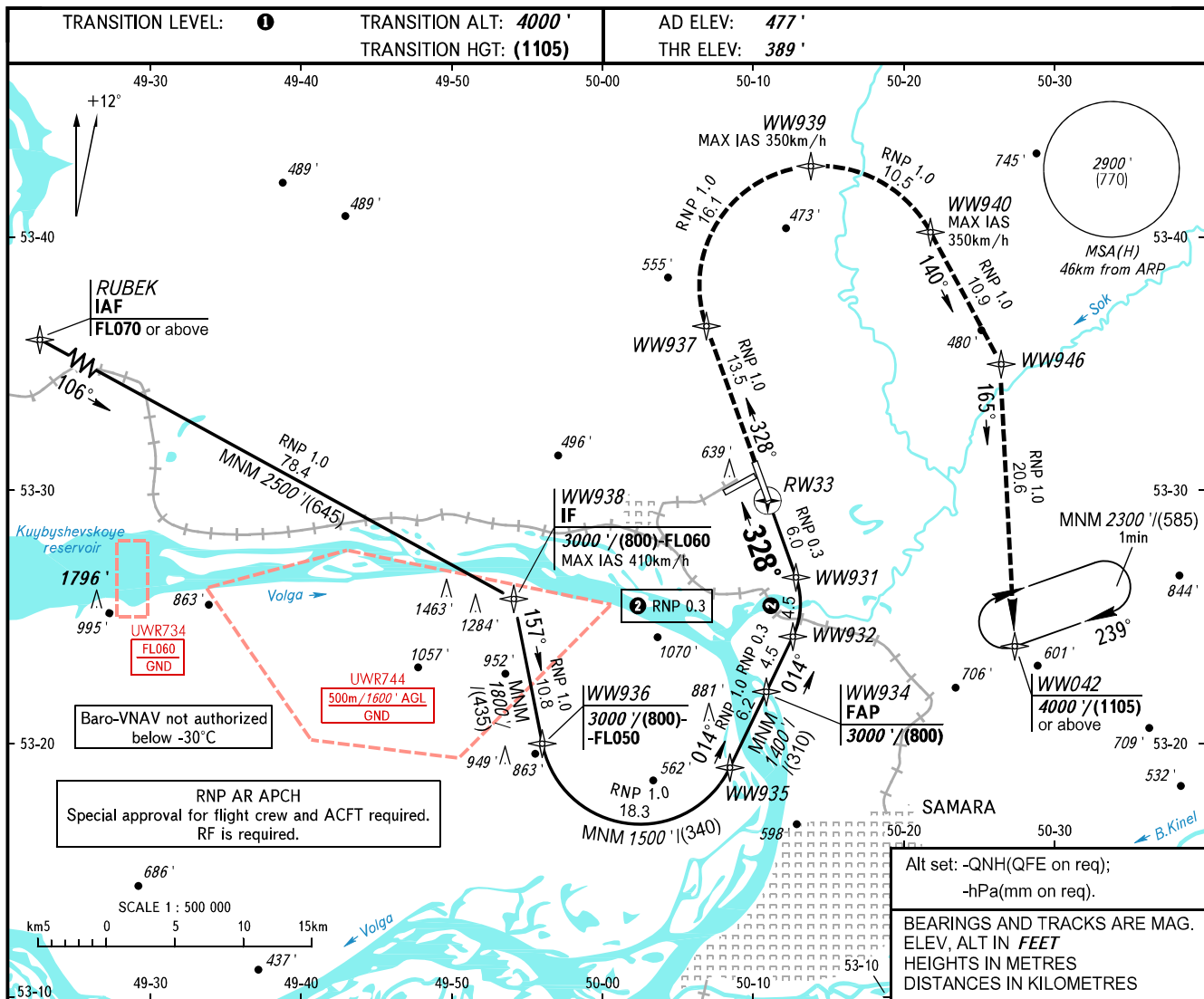


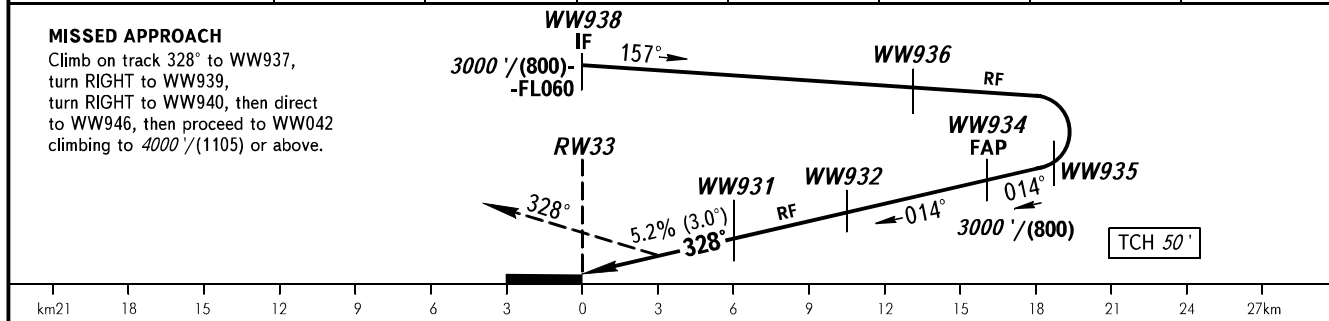
**INSTRUMENT  
APPROACH  
CHART - ICAO**

APPROACH	130.800
RADAR	128.000
TOWER	118.200

**SAMARA, RUSSIA  
KURUMOCH  
RNP X RWY 33 (AR)**



DIST TO RW33	2.0	4.0	6.0	8.0	10.0	12.0	14.0
ALTITUDE/HEIGHT	780'/(120)	1130'/(230)	1470'/(310)	1810'/(435)	2160'/(540)	2500'/(645)	2850'/(755)



OCA(H)		A	B	C	D	<b>① TRANSITION LEVEL:</b> - FL050 when QNH is 1013 hPa (760mm mercury column) or above; - FL060 when QNH is 977 hPa (733mm mercury column) or above, but less than 1013 hPa (760mm mercury column); - FL070 when QNH is less than 977 hPa (733mm mercury column).				
Straight-in Approach	RNP (0.3)	683' (296') / (90)	683' (296') / (90)	683' (296') / (90)	691' (302') / (93)					
GROUND SPEED	km/h	150	180	210	240	270	300	330	360	
RATE OF DESCENT	m/s		2.2	2.6	3.0	3.5	3.9	4.3	4.8	5.2
RATE OF DESCENT	ft/min		433	512	591	689	768	846	945	1024