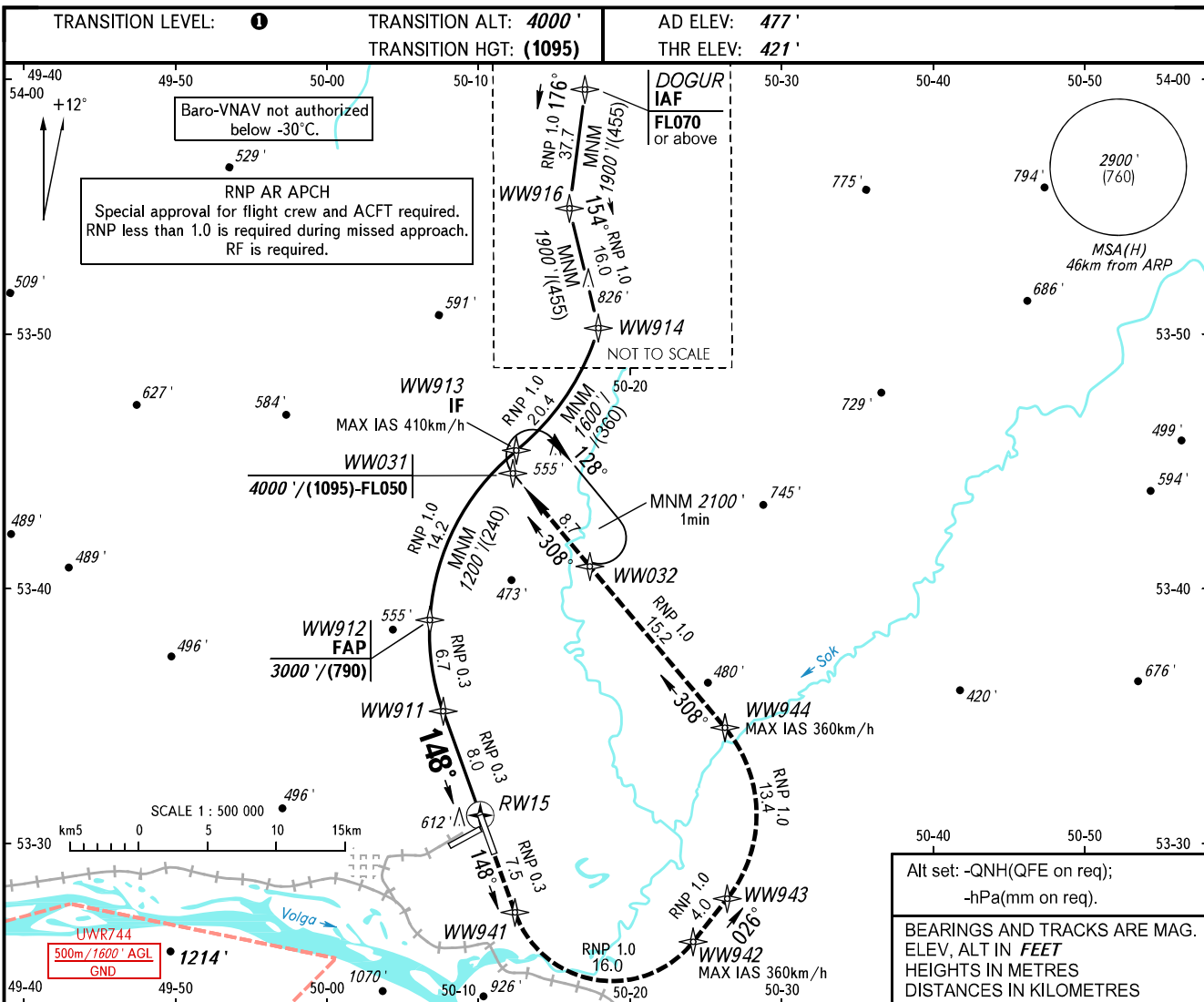


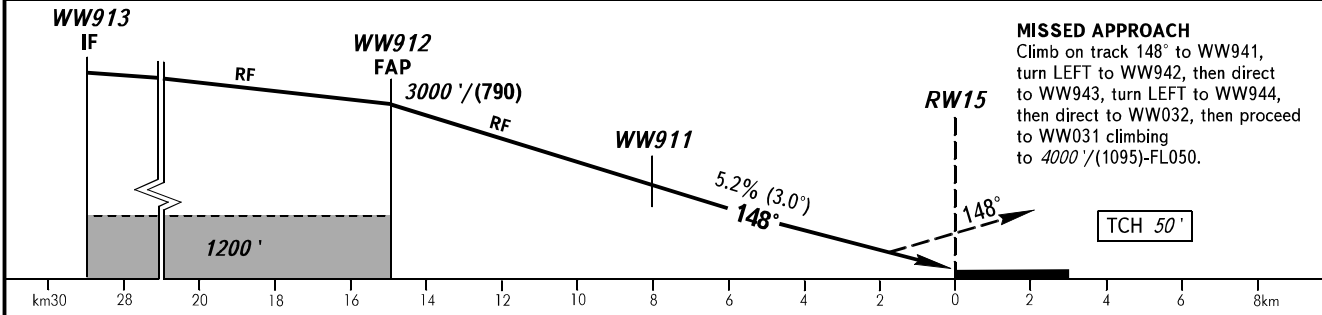
**INSTRUMENT
APPROACH
CHART - ICAO**

APPROACH	130.800
RADAR	128.000
TOWER	118.200

**SAMARA, RUSSIA
KURUMOCH
RNP X RWY 15 (AR)**



DIST to RW15	14.0	12.0	10.0	8.0	6.0	4.0	2.0
ALTITUDE/HEIGHT	2850'/(745)	2500'/(635)	2160'/(530)	1810'/(425)	1470'/(320)	1130'/(220)	780'/(110)



OCA(H)		A	B	C	D	① TRANSITION LEVEL: - FL050 when QNH is 1013 hPa (760mm mercury column) or above; - FL060 when QNH is 977 hPa (733mm mercury column) or above, but less than 1013 hPa (760mm mercury column); - FL070 when QNH is less than 977 hPa (733mm mercury column).
Straight-in Approach	RNP (0.3)	670' (249') / (76)	682' (261') / (80)	690' (269') / (82)	701' (280') / (86)	

GROUND SPEED	km/h	150	180	210	240	270	300	330	360
RATE OF DESCENT	m/s	2.2	2.6	3.0	3.5	3.9	4.3	4.8	5.2
RATE OF DESCENT	ft/min	433	512	591	689	768	846	945	1024

CHANGE: NIL