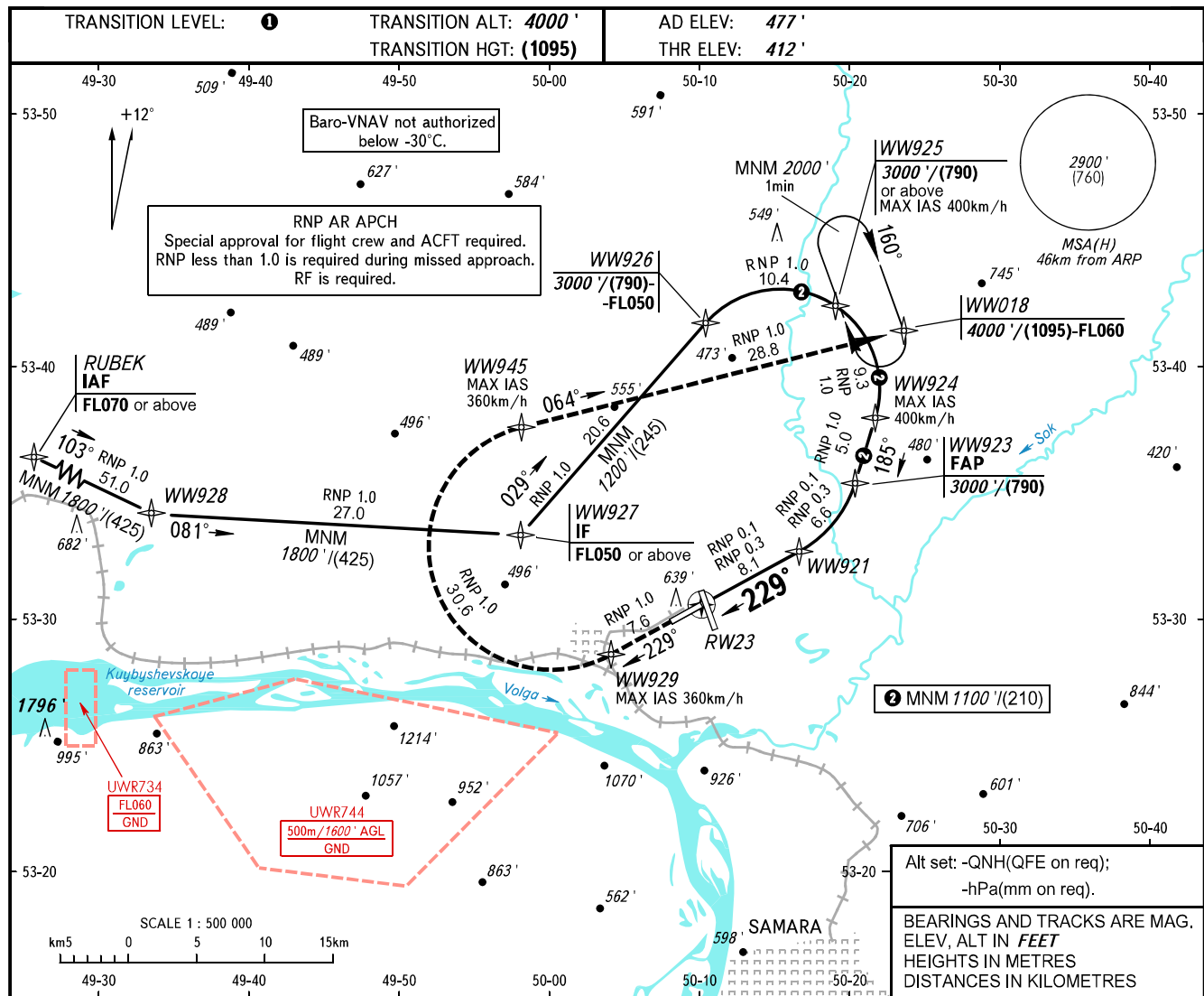


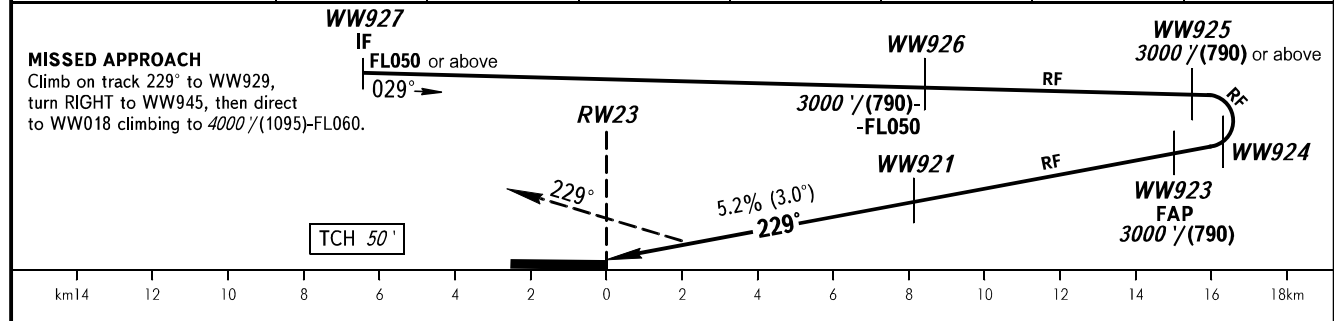
**INSTRUMENT
APPROACH
CHART - ICAO**

APPROACH	130.800
RADAR	128.000
TOWER	118.200

**SAMARA, RUSSIA
KURUMOCH
RNP X RWY 23 (AR)**



DIST to RW23	2.0	4.0	6.0	8.0	10.0	12.0	14.0
ALTITUDE/HEIGHT	780'/(115)	1130'/(220)	1470'/(325)	1810'/(430)	2160'/(535)	2500'/(640)	2850'/(745)



OCA(H)		A	B	C	D	1 TRANSITION LEVEL: - FL050 when QNH is 1013 hPa (760mm mercury column) or above; - FL060 when QNH is 977 hPa (733mm mercury column) or above, but less than 1013 hPa (760mm mercury column); - FL070 when QNH is less than 977 hPa (733mm mercury column).				
Straight-in Approach	RNP (0.3)	769' (379') /(109)	781' (391') /(113)	789' (400') /(115)	800' (411') /(119)					
	RNP (0.1)	673' (284') /(80)	755' (366') /(105)	765' (376') /(108)	775' (386') /(111)					
GROUND SPEED	km/h	150	180	210	240	270	300	330	360	
RATE OF DESCENT	m/s		2.2	2.6	3.0	3.5	3.9	4.3	4.8	5.2
RATE OF DESCENT	ft/min		433	512	591	689	768	846	945	1024