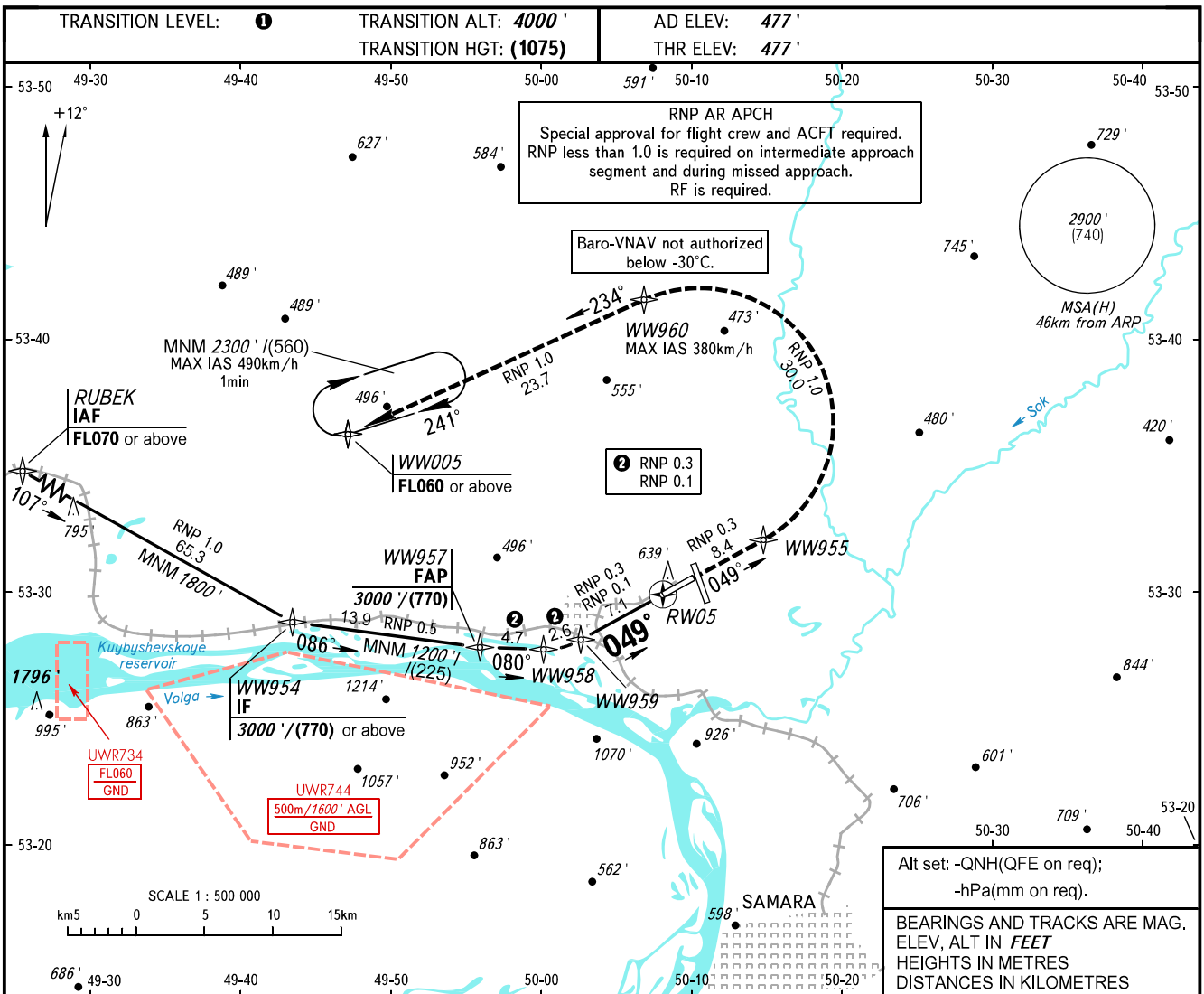


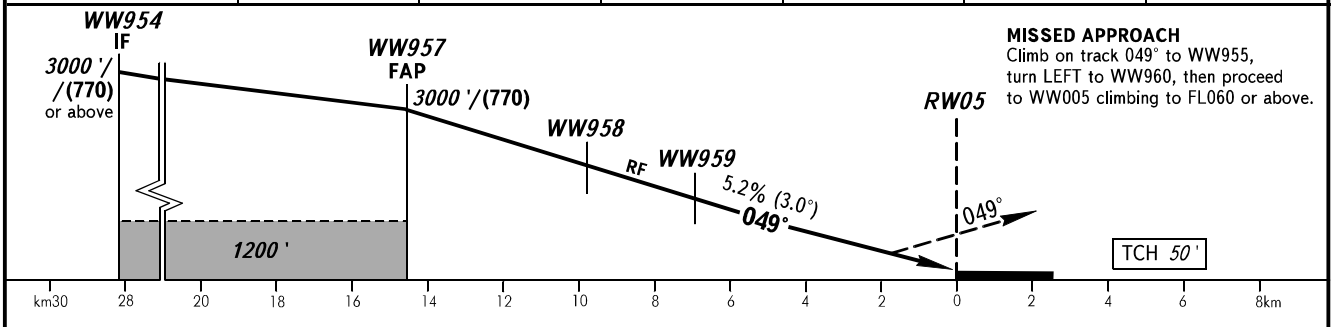
**INSTRUMENT  
APPROACH  
CHART - ICAO**

APPROACH	<b>130.800</b>
RADAR	<b>128.000</b>
TOWER	<b>118.200</b>

**SAMARA, RUSSIA**  
KURUMOCH  
RNP X RWY 05 (AR)



DIST to RW05	12.0	10.0	8.0	6.0	4.0	2.0
ALTITUDE/HEIGHT	2500'/(620)	2160'/(515)	1810'/(410)	1470'/(305)	1130'/(200)	780'/(95)



OCA(H)		A	B	C	D
Straight-in Approach	RNP (0.3)	769' (292') / (89)	781' (304') / (93)	789' (312') / (95)	800' (323') / (99)
	RNP (0.1)	769' (292') / (89)	781' (304') / (93)	789' (312') / (95)	800' (323') / (99)

**1** TRANSITION LEVEL:  
 - FL050 when QNH is 1013 hPa (760mm mercury column) or above;  
 - FL060 when QNH is 977 hPa (733mm mercury column) or above, but less than 1013 hPa (760mm mercury column);  
 - FL070 when QNH is less than 977 hPa (733mm mercury column).

GROUND SPEED	km/h	150	180	210	240	270	300	330	360
RATE OF DESCENT	m/s		2.2	2.6	3.0	3.5	3.9	4.3	5.2
RATE OF DESCENT	ft/min		433	512	591	689	768	846	1024

CHANGE: New chart