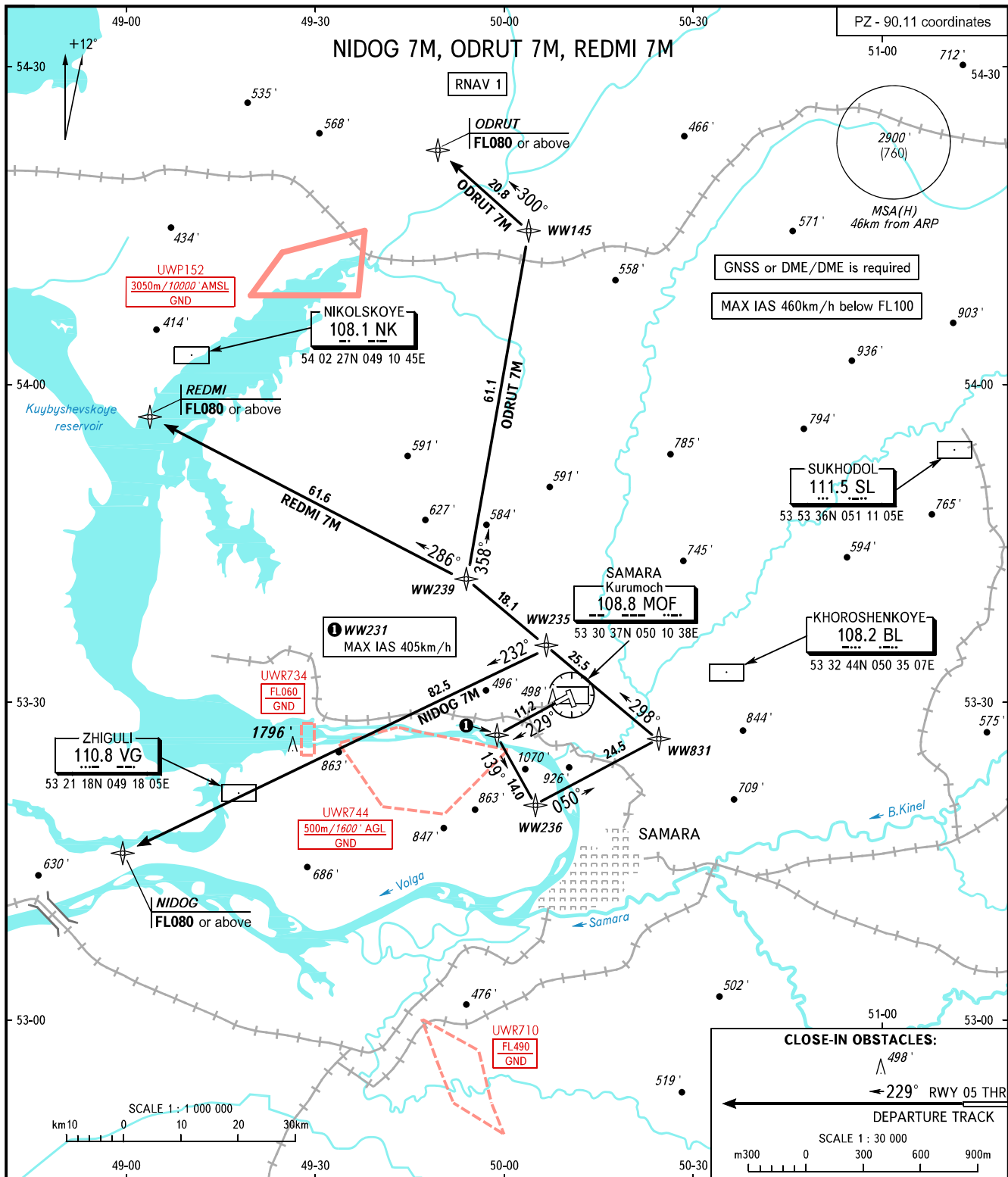


STANDARD DEPARTURE CHART
INSTRUMENT (SID) - ICAO

TRANSITION ALT: **4000'**
TRANSITION HGT: **(1095)**

SAMARA, RUSSIA
KURUMOCH
RNAV RWY 23



TOWER **118.200**
RADAR **128.000**
APPROACH **130.800**

WARNING:
1. There are close-in obstacles.
2. The minimum climb gradient required due to obstacles:
- 3.7% up to 900'(150) for NIDOG 7M, ODRUT 7M, REDMI 7M.

BEARINGS AND TRACKS ARE MAGNETIC
ALTITUDES AND ELEVATIONS IN **FEET**
HEIGHTS IN METRES
DISTANCES IN KILOMETRES

Alt set: -QNH(QFE on req);
-hPa(mm on req).