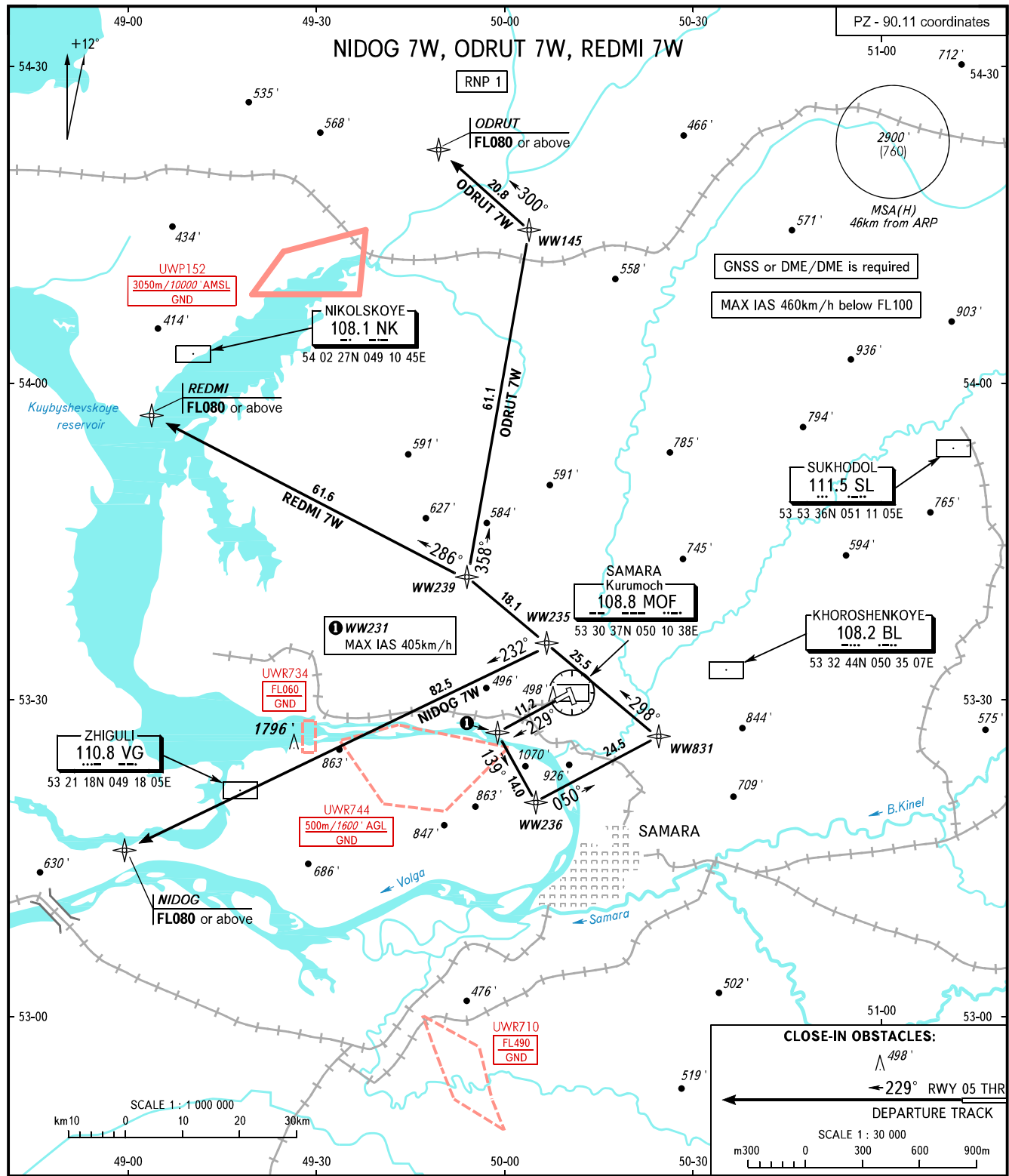


STANDARD DEPARTURE CHART  
INSTRUMENT (SID) - ICAO

TRANSITION ALT: **4000'**  
TRANSITION HGT: **(1095)**

**SAMARA, RUSSIA**  
KURUMOCH  
RNP RWY 23



TOWER **118.200**  
RADAR **128.000**  
APPROACH **130.800**

**WARNING:**  
1. There are close-in obstacles.  
2. The minimum climb gradient required due to obstacles:  
- 3.7% up to 900'/(150) for NIDOG 7W, ODRUT 7W, REDMI 7W.

BEARINGS AND TRACKS ARE MAGNETIC  
ALTITUDES AND ELEVATIONS IN **FEET**  
HEIGHTS IN METRES  
DISTANCES IN KILOMETRES

Alt set: -QNH(QFE on req);  
-hPa(mm on req).