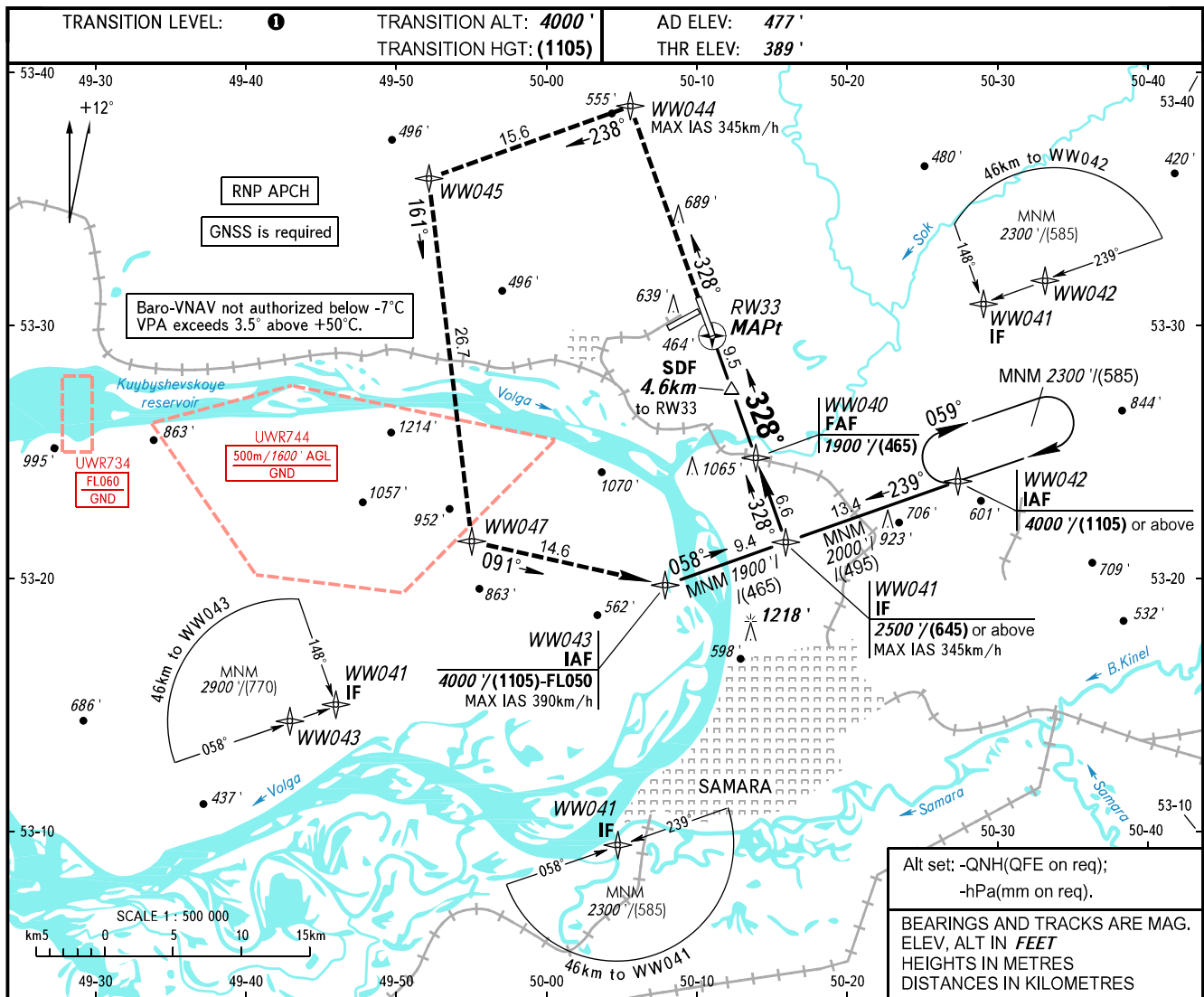


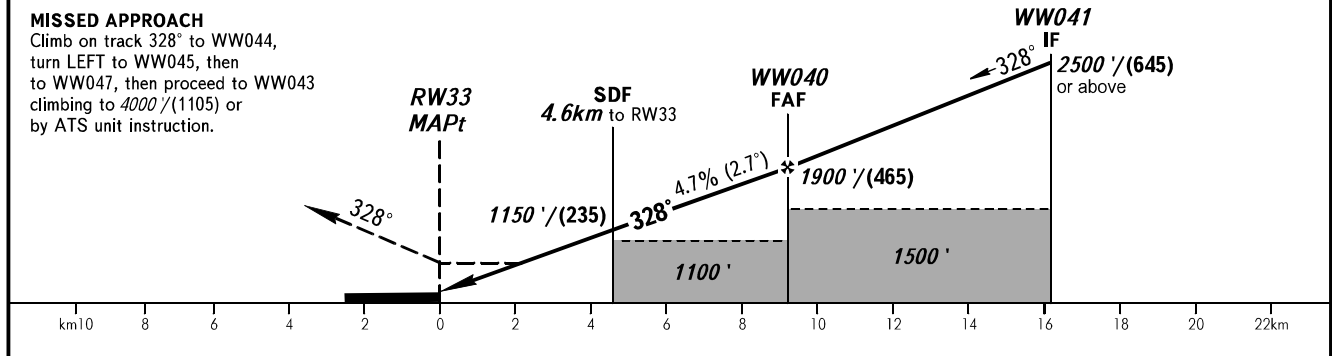
**INSTRUMENT
APPROACH
CHART - ICAO**

**SAMARA, RUSSIA
KURUMOCH
RNP RWY 33**

RADAR	128.000
TOWER	118.200



DIST to RW33	4.0	6.0	8.0	9.4
ALTITUDE	1060'	1360'	1670'	1900'



OCA(H)		A	B	C	D						
Straight-in Approach	LNAV	710' (330')	710' (330')	710' (330')	710' (330')						
	LNAV/VNAV	595' (206')	606' (218')	615' (226')	625' (237')						
Circling		940' (460')	980' (500')	1090' (610')	1220' (740')						
GROUND SPEED		km/h	150	180	210	240	270	300	330	360	390
RATE OF DESCENT		m/s	2.0	2.4	2.7	3.1	3.5	3.9	4.3	4.7	5.1
RATE OF DESCENT		ft/min	385	463	540	617	694	771	848	925	1002

TRANSITION LEVEL:

- FL050 when QNH is 1013 hPa (760mm mercury column) or above;
- FL060 when QNH is 977 hPa (733mm mercury column) or above, but less than 1013 hPa (760mm mercury column);
- FL070 when QNH is less than 977 hPa (733mm mercury column).

WARNING
MAPt at RW33. Timing not authorized for defining MAPt.