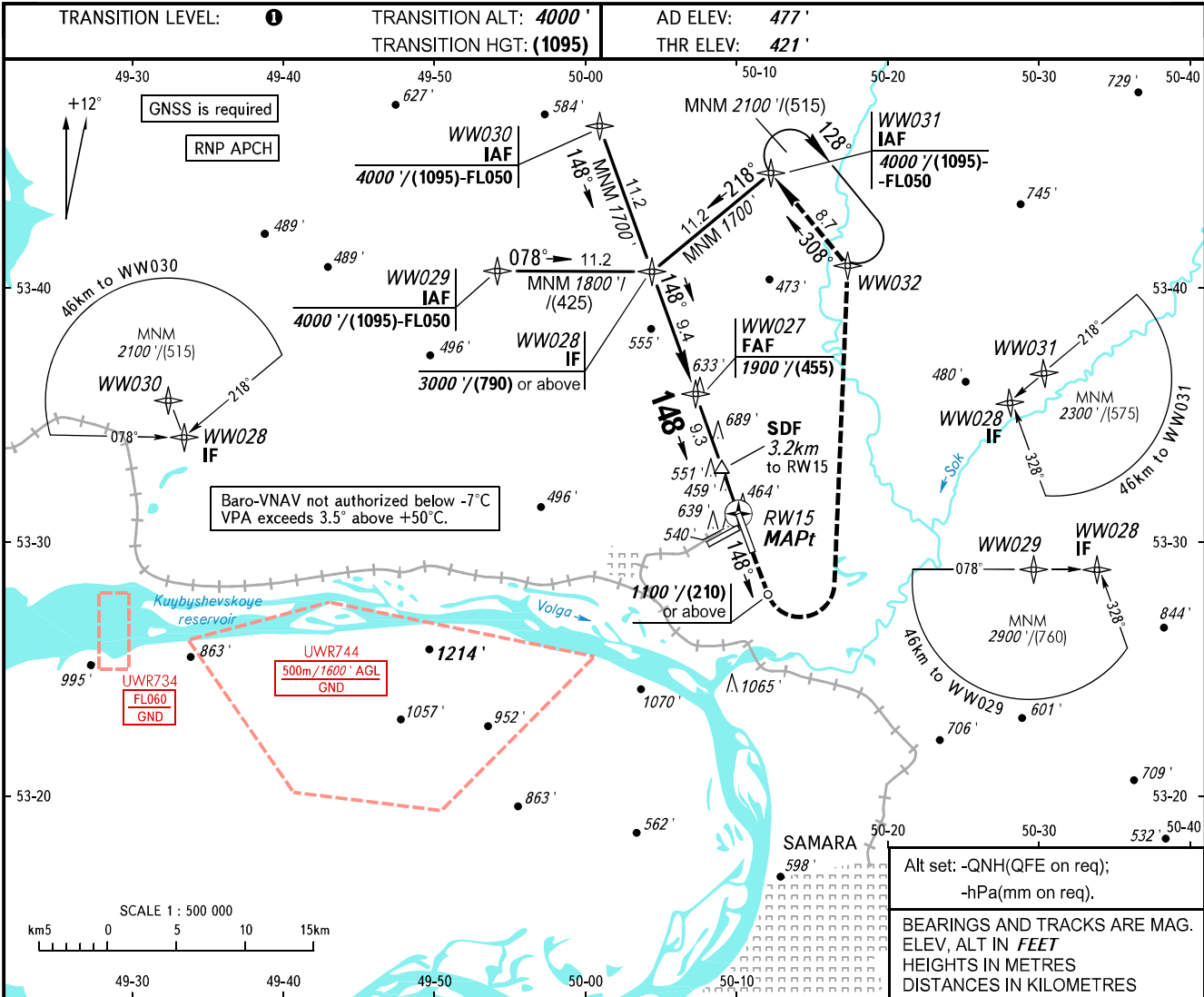


**INSTRUMENT
APPROACH
CHART - ICAO**

RADAR	128.000
TOWER	118.200

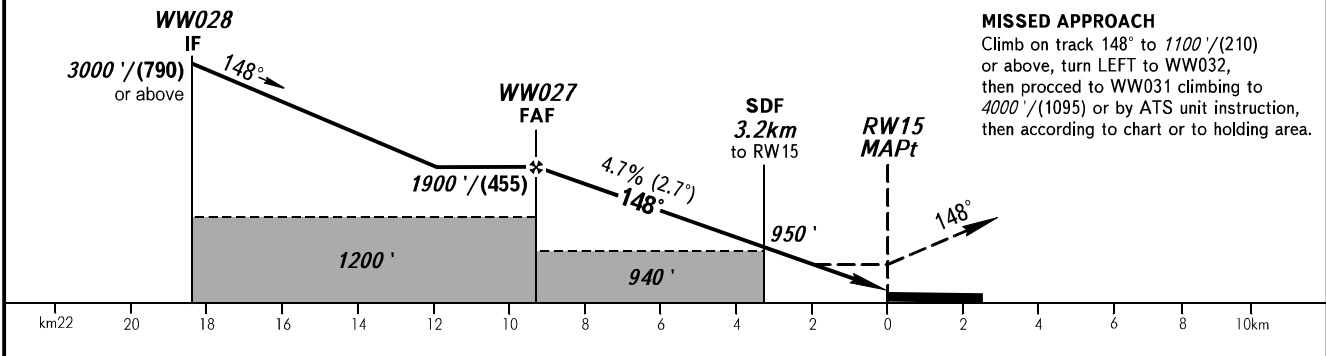
**SAMARA, RUSSIA
KURUMOCH
RNP RWY 15**



Alt set: -QNH(QFE on req);
-hPa(mm on req).

BEARINGS AND TRACKS ARE MAG.
ELEV, ALT IN FEET
HEIGHTS IN METRES
DISTANCES IN KILOMETRES

DIST to RW15	9.3	8.0	6.0	4.0
ALTITUDE	1900'	1700'	1400'	1090'



MISSED APPROACH
Climb on track 148° to 1100'/(210) or above, turn LEFT to WW032, then proceed to WW031 climbing to 4000'/(1095) or by ATS unit instruction, then according to chart or to holding area.

OCA(H)		A	B	C	D
Straight-in Approach	LNAV	790' (370')	790' (370')	790' (370')	790' (370')
	LNAV/VNAV	670' (250')	690' (270')	690' (270')	710' (290')
Circling		940' (460')	980' (500')	1090' (610')	1220' (740')
GROUND SPEED		km/h	150	180	210
RATE OF DESCENT		m/s	2.0	2.4	2.7
RATE OF DESCENT		ft/min	385	463	540

1 TRANSITION LEVEL:
- FL050 when QNH is 1013 hPa (760mm mercury column) or above;
- FL060 when QNH is 977 hPa (733mm mercury column) or above, but less than 1013 hPa (760mm mercury column);
- FL070 when QNH is less than 977 hPa (733mm mercury column).

WARNING
MAPt at RW15. Timing not authorized for defining MAPt.