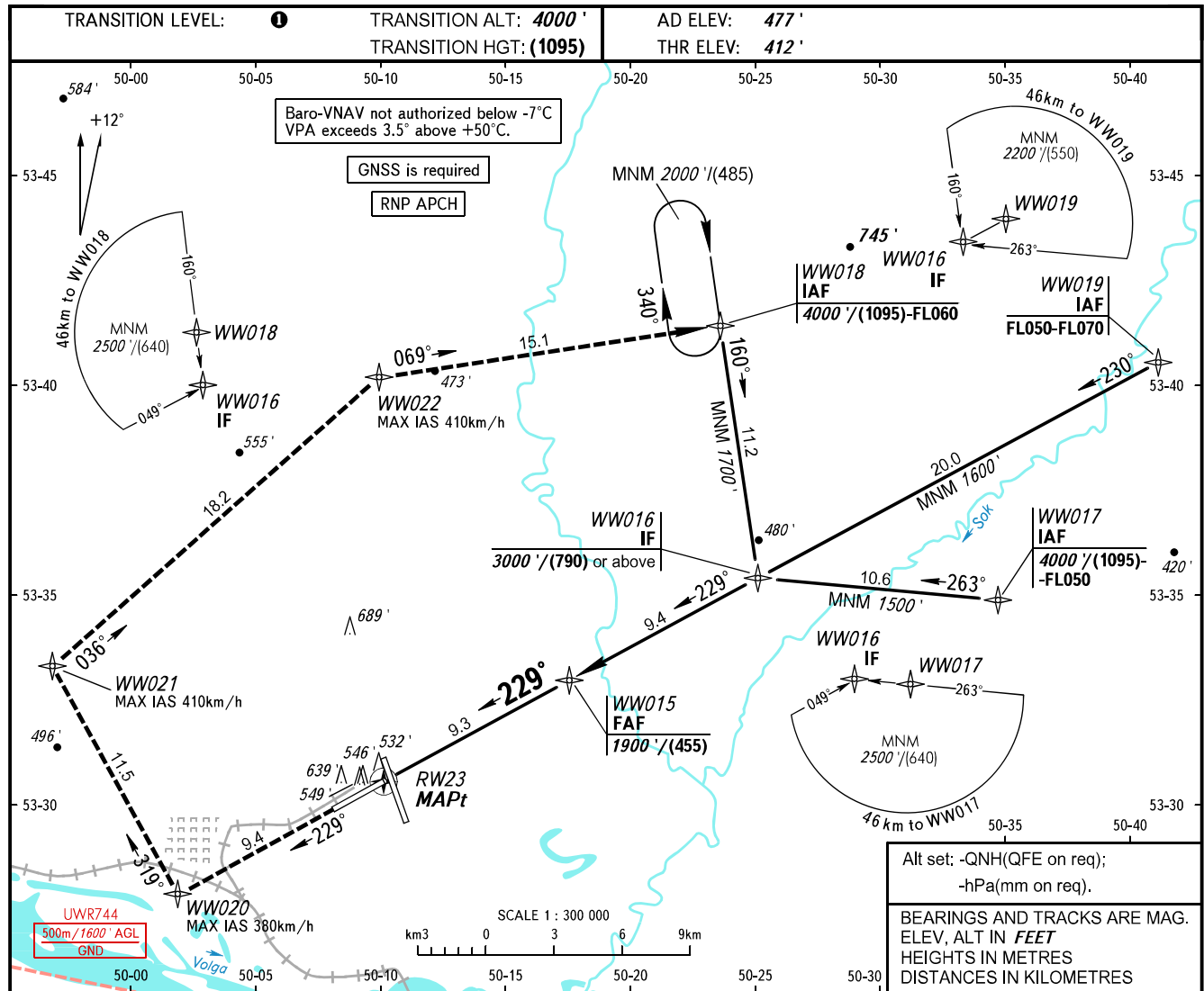


**INSTRUMENT
APPROACH
CHART - ICAO**

**SAMARA, RUSSIA
KURUMOCH
RNP RWY 23**

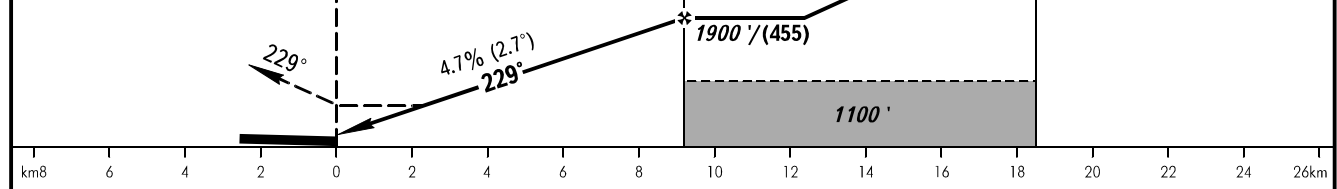
RADAR	128.000
TOWER	118.200



Alt set: -QNH(QFE on req);
-hPa(mm on req).

BEARINGS AND TRACKS ARE MAG.
ELEV, ALT IN FEET
HEIGHTS IN METRES
DISTANCES IN KILOMETRES

MISSED APPROACH
Climb on track 229° to WW020, turn RIGHT to WW021, then to WW022, then proceed to WW018 climbing to 4000'/(1095) or by ATS unit instruction, then according to chart or to holding area.



OCA(H)		A	B	C	D
Straight-in	LNAV	800' (390')	800' (390')	800' (390')	800' (390')
	LNAV/VNAV	676' (265')	688' (277')	699' (288')	773' (361')
Approach					
Circling		940' (460')	980' (500')	1090' (610')	1220' (740')
GROUND SPEED		km/h	150	180	210
RATE OF DESCENT		m/s	2.0	2.4	2.7
RATE OF DESCENT		ft/min	385	463	540

1 TRANSITION LEVEL:
- FL050 when QNH is 1013 hPa (760mm mercury column) or above;
- FL060 when QNH is 977 hPa (733mm mercury column) or above, but less than 1013 hPa (760mm mercury column);
- FL070 when QNH is less than 977 hPa (733mm mercury column).

WARNING
MAPt at RW23. Timing not authorized for defining MAPt.

240	270	300	330	360	390
3.1	3.5	3.9	4.3	4.7	5.1
617	694	771	848	925	1002