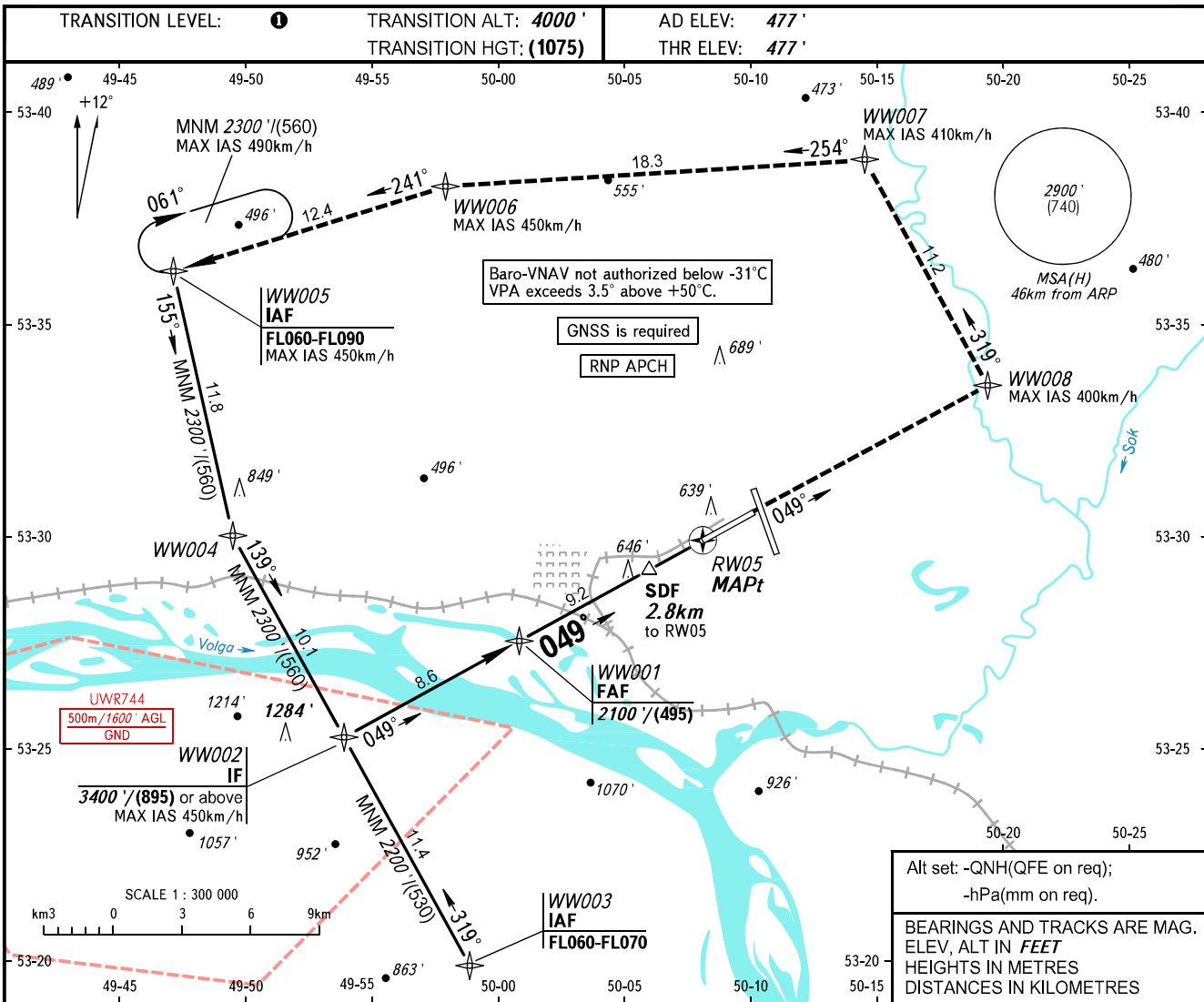


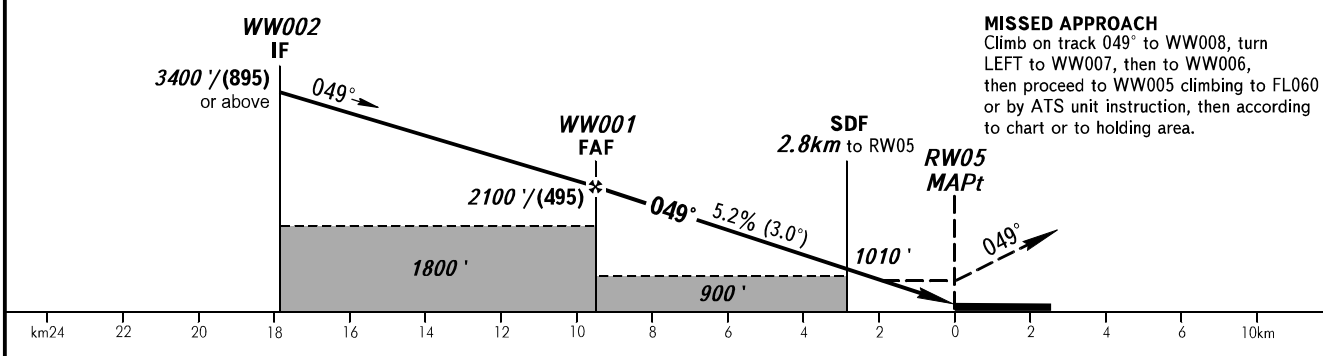
**INSTRUMENT
APPROACH
CHART - ICAO**

RADAR	128.000
TOWER	118.200

**SAMARA, RUSSIA
KURUMOCH
RNP RWY 05**



DIST to RW05	9.2	8.0	6.0	4.0
ALTITUDE	2100'	1890'	1550'	1080'



MISSED APPROACH
Climb on track 049° to WW008, turn LEFT to WW007, then to WW006, then proceed to WW005 climbing to FL060 or by ATS unit instruction, then according to chart or to holding area.

OCA(H)		A	B	C	D
Straight-in	LNNAV	870' (390')	870' (390')	870' (390')	870' (390')
	LNNAV/VNAV	771' (294')	782' (305')	790' (313')	800' (323')
Circling		940' (460')	980' (500')	1090' (610')	1220' (740')
GROUND SPEED		km/h	150	180	210
RATE OF DESCENT		m/s	2.2	2.6	3.0
RATE OF DESCENT		ft/min	427	512	597

1 TRANSITION LEVEL:
 - FL050 when QNH is 1013 hPa (760mm mercury column) or above;
 - FL060 when QNH is 977 hPa (733mm mercury column) or above, but less than 1013 hPa (760mm mercury column);
 - FL070 when QNH is less than 977 hPa (733mm mercury column).
WARNING
 MAPt at RW05. Timing not authorized for defining MAPt.

240	270	300	330	360	390
3.5	3.9	4.3	4.8	5.2	5.6
682	768	853	938	1024	1109

CHANGE: New chart