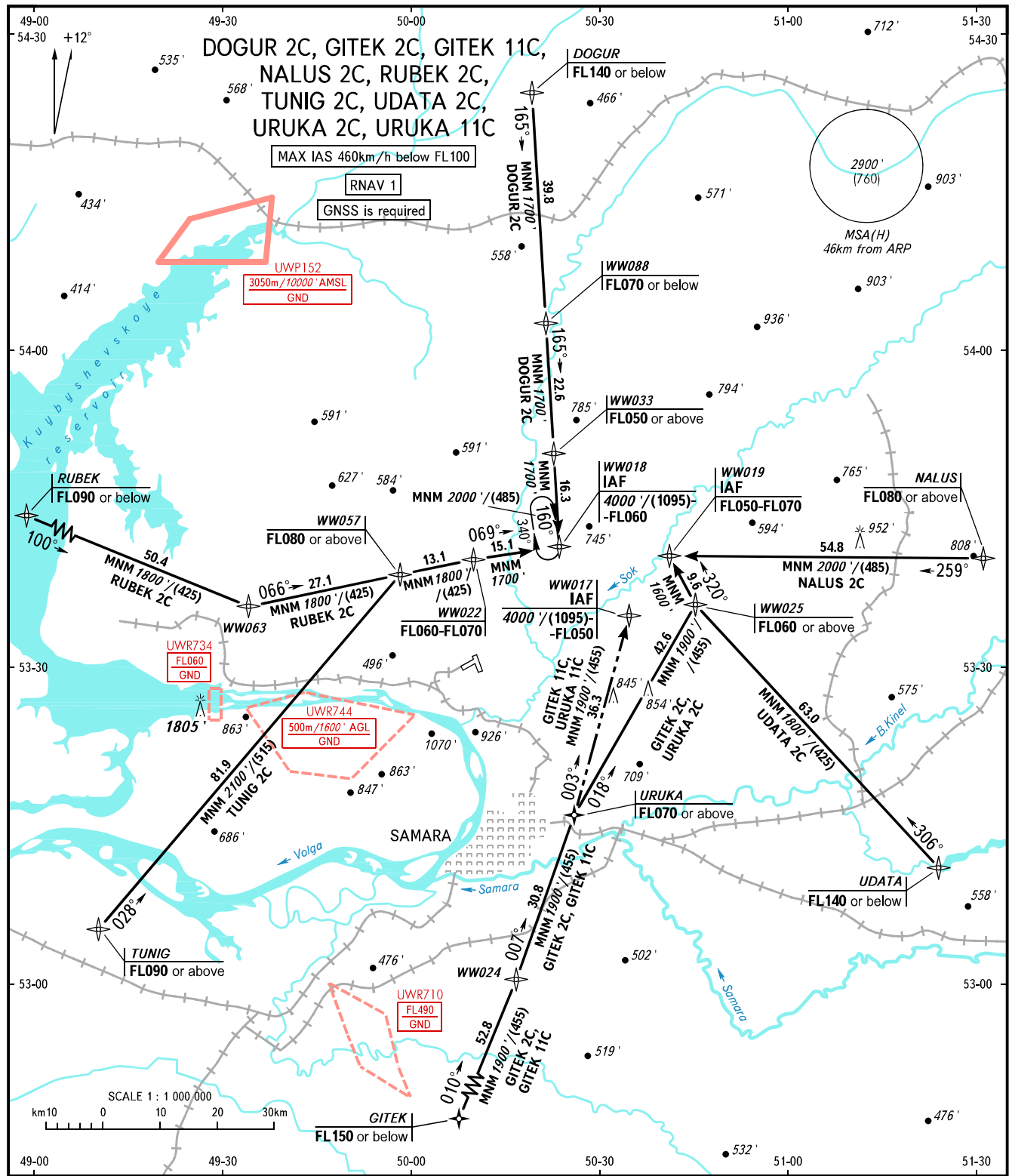


STANDARD ARRIVAL CHART
INSTRUMENT (STAR) - ICAO

SAMARA, RUSSIA
KURUMOCH
RNAV RWY 23

TRANSITION
LEVEL: **1**



APPROACH	130.800	1 TRANSITION LEVEL: - FL050 when QNH is 1013 hPa (760mm mercury column) or above; - FL060 when QNH is 977 hPa (733mm mercury column) or above, but less than 1013 hPa (760mm mercury column); - FL070 when QNH is less than 977 hPa (733mm mercury column).
RADAR	128.000	
TOWER	118.200	
BEARINGS AND TRACKS ARE MAGNETIC ALTITUDES AND ELEVATIONS IN FEET HEIGHTS IN METRES DISTANCES IN KILOMETRES		Alt set: -QNH(QFE on req); -hPa(mm on req).