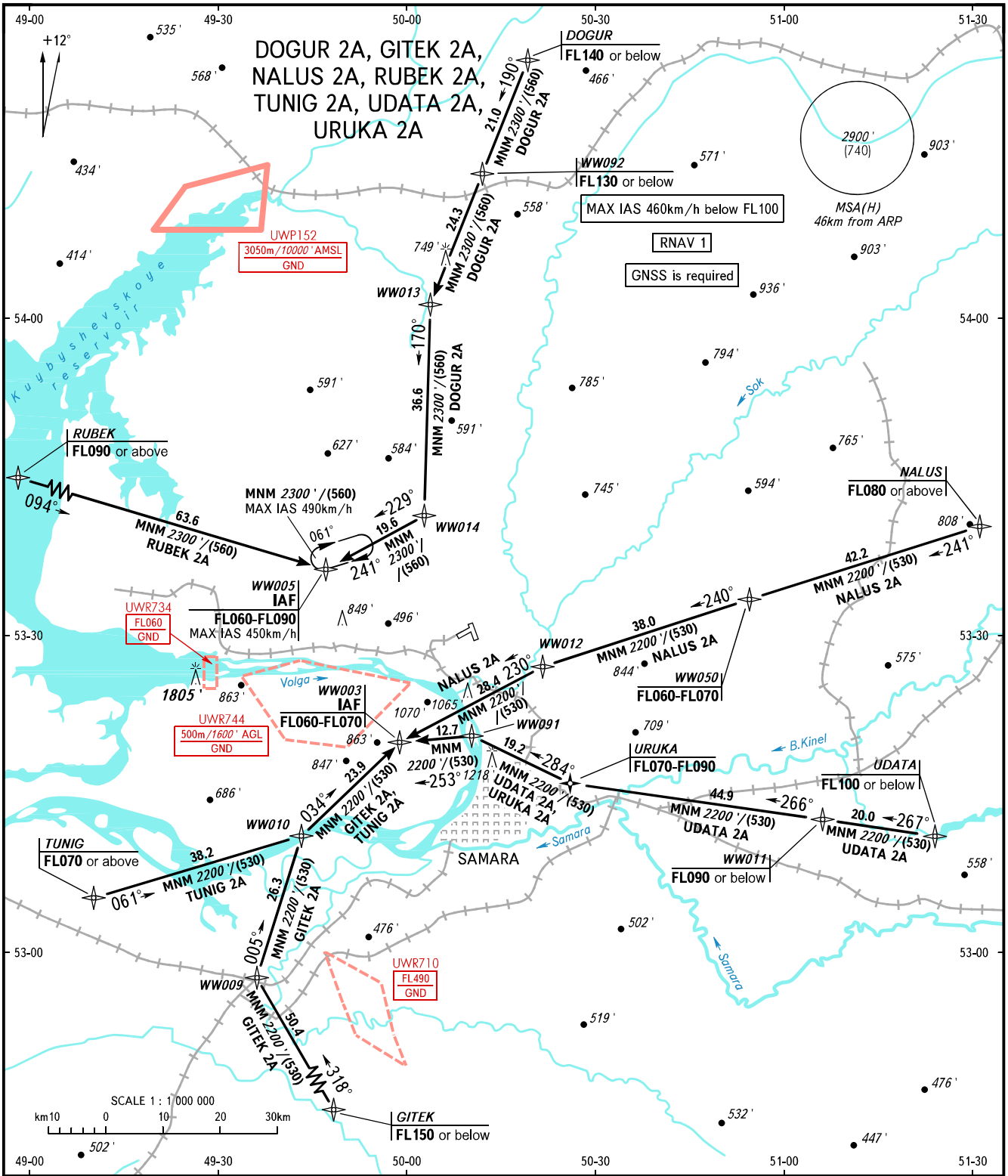


STANDARD ARRIVAL CHART  
INSTRUMENT (STAR) - ICAO

SAMARA, RUSSIA  
KURUMOCH  
RNAV RWY 05

TRANSITION  
LEVEL: **1**



APPROACH 130.800  
RADAR 128.000  
TOWER 118.200

**1** TRANSITION LEVEL:  
- FL050 when QNH is 1013 hPa (760mm mercury column) or above;  
- FL060 when QNH is 977 hPa (733mm mercury column) or above,  
but less than 1013 hPa (760mm mercury column);  
- FL070 when QNH is less than 977 hPa (733mm mercury column).

BEARINGS AND TRACKS ARE MAGNETIC  
ALTITUDES AND ELEVATIONS IN FEET  
HEIGHTS IN METRES  
DISTANCES IN KILOMETRES

Alt set: -QNH(QFE on req);  
-hPa(mm on req).

CHANGE: New chart