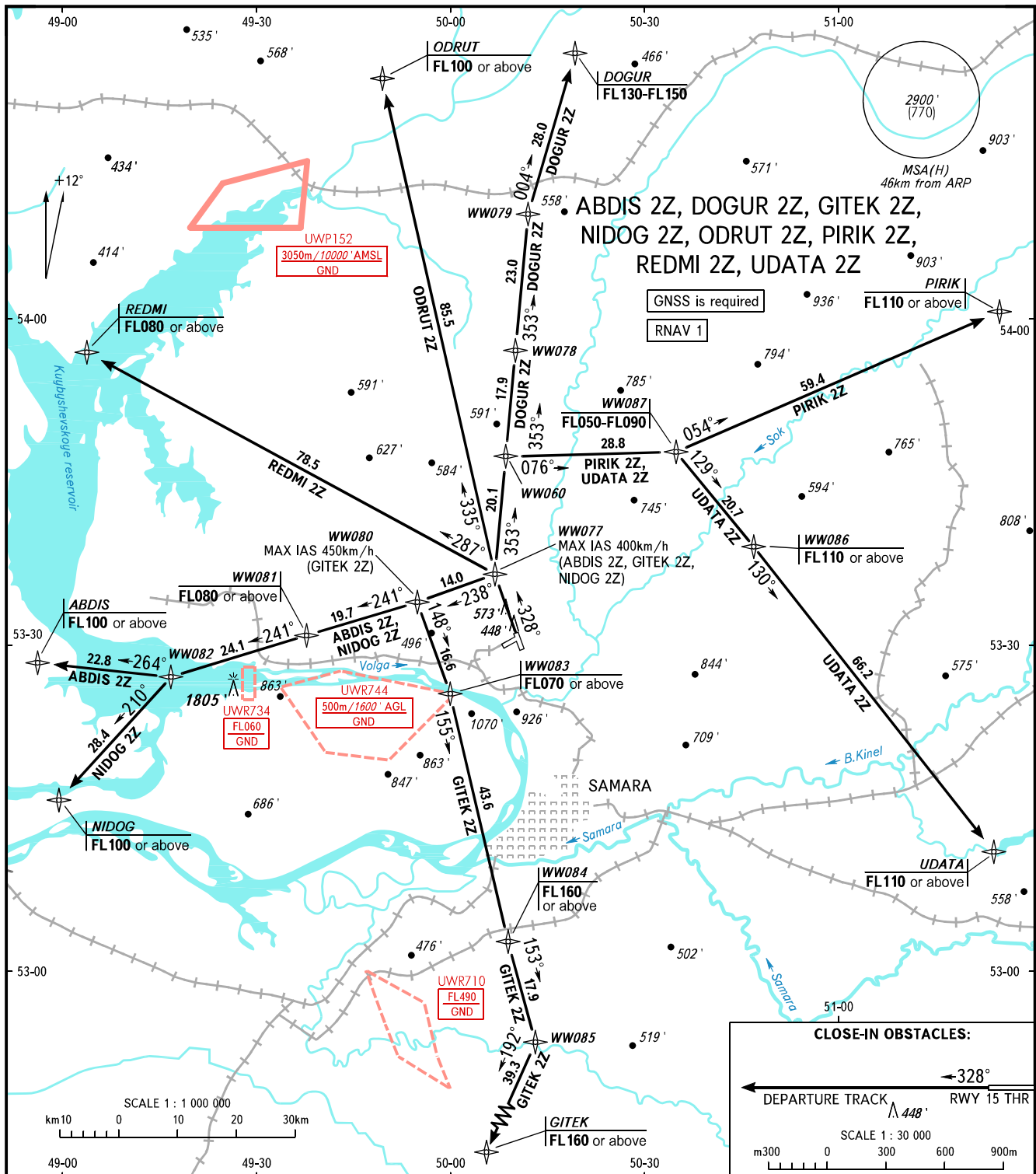


STANDARD DEPARTURE CHART
INSTRUMENT (SID) - ICAO

TRANSITION ALT: **4000'**
TRANSITION HGT: **(1105)**

SAMARA, RUSSIA
KURUMOCH
RNAV RWY 33



TOWER **118.200**
RADAR **128.000**
APPROACH **130.800**

WARNING:
1. There are close-in obstacles.
2. MNM climb gradient:
- 5.5% up to 900'(160) due to obstacles, then 5.5% up to FL080 due to the airspace structure for ABDIS 2Z;
- 3.7% up to FL050 DOGUR 2Z;
- 5.5% up to 900'(160) due to obstacles, then 5.5% up to FL070 due to the airspace structure for GITEK 2Z;
- 5.5% up to 900'(160) due to obstacles, then 5.5% up to FL080 due to the airspace structure for NIDOG 2Z;
- 3.7% up to FL050 for ODRUT 2Z;
- 4.2% up to FL110 for UDATA 2Z.

BEARINGS AND TRACKS ARE MAGNETIC
ALTITUDES AND ELEVATIONS IN **FEET**
HEIGHTS IN METRES
DISTANCES IN KILOMETRES

Alt set: -QNH(QFE on req);
-hPa(mm on req).