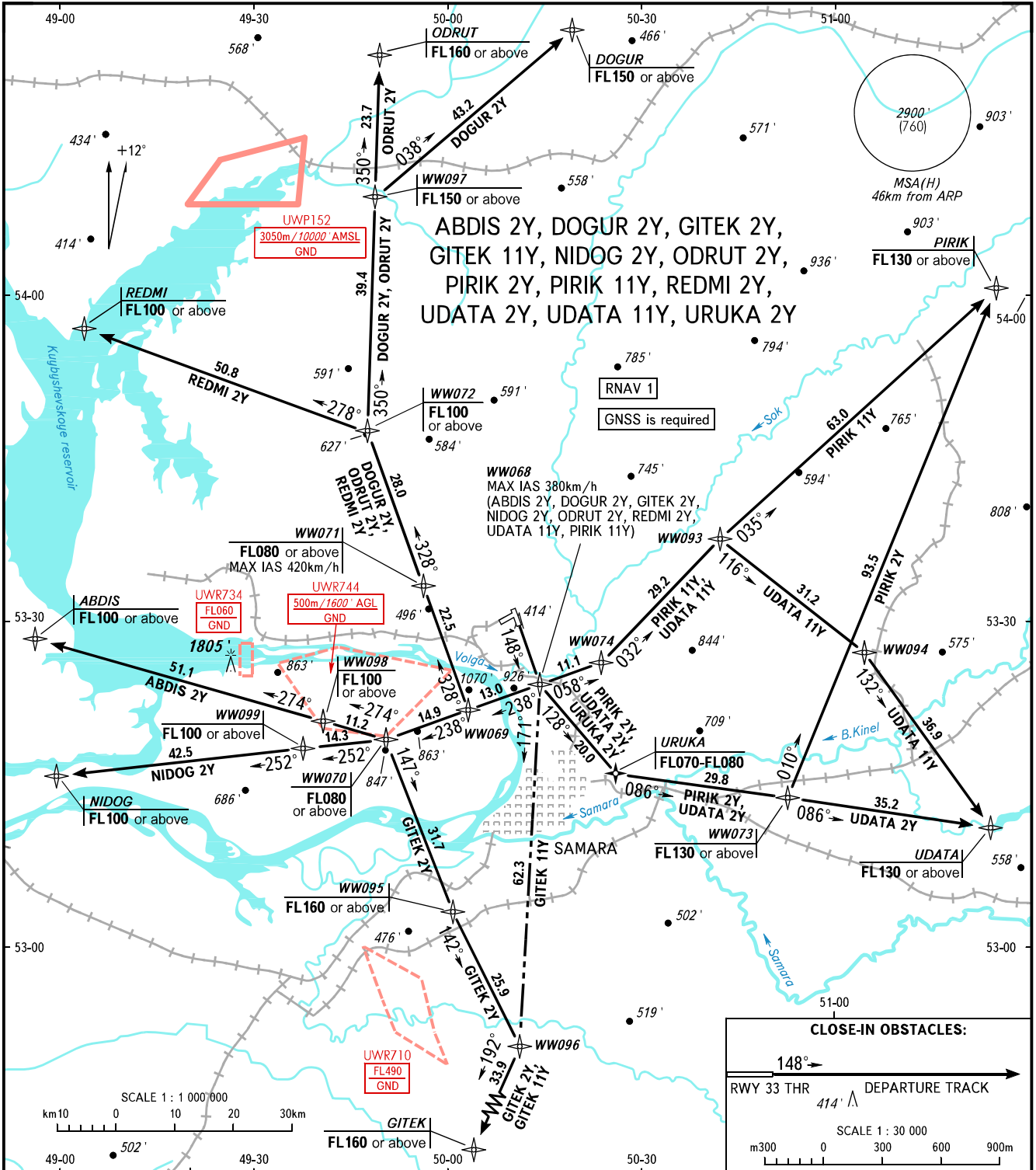


STANDARD DEPARTURE CHART
INSTRUMENT (SID) - ICAO

TRANSITION ALT: 4000'
TRANSITION HGT: (1095)

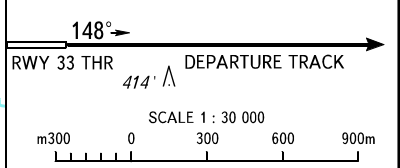
SAMARA, RUSSIA
KURUMOCH
RNAV RWY 15



ABDIS 2Y, DOGUR 2Y, GITEK 2Y,
GITEK 11Y, NIDOG 2Y, ODRUT 2Y,
PIRIK 2Y, PIRIK 11Y, REDMI 2Y,
UDATA 2Y, UDATA 11Y, URUKA 2Y

RNAV 1
GNSS is required
WW068
MAX IAS 380km/h
(ABDIS 2Y, DOGUR 2Y, GITEK 2Y,
NIDOG 2Y, ODRUT 2Y, REDMI 2Y,
UDATA 11Y, PIRIK 11Y)

CLOSE-IN OBSTACLES:



TOWER 118.200
RADAR 128.000
APPROACH 130.800

- WARNING:**
- There are close-in obstacles.
 - MNM climb gradient due to the airspace structure:
 - 6.3% up to FL080 for ABDIS 2Y;
 - 5.5% up to FL080 for DOGUR 2Y;
 - 6.3% up to FL080 for GITEK 2Y;
 - 4.5% up to FL160 for GITEK 11Y;
 - 6.3% up to FL080 for NIDOG 2Y;
 - 5.5% up to FL080 for ODRUT 2Y;
 - 7.7% up to FL080 for PIRIK 2Y;
 - 3.5% up to FL130 for PIRIK 11Y;
 - 5.5% up to FL080 for REDMI 2Y;
 - 7.7% up to FL080 for UDATA 2Y;
 - 3.4% up to FL130 for UDATA 11Y;
 - 7.7% up to FL080 for URUKA 2Y.

BEARINGS AND TRACKS ARE MAGNETIC
ALTITUDES AND ELEVATIONS IN FEET
HEIGHTS IN METRES
DISTANCES IN KILOMETRES

Alt set: -QNH(QFE on req);
-hPa(mm on req).

CHANGE: New chart