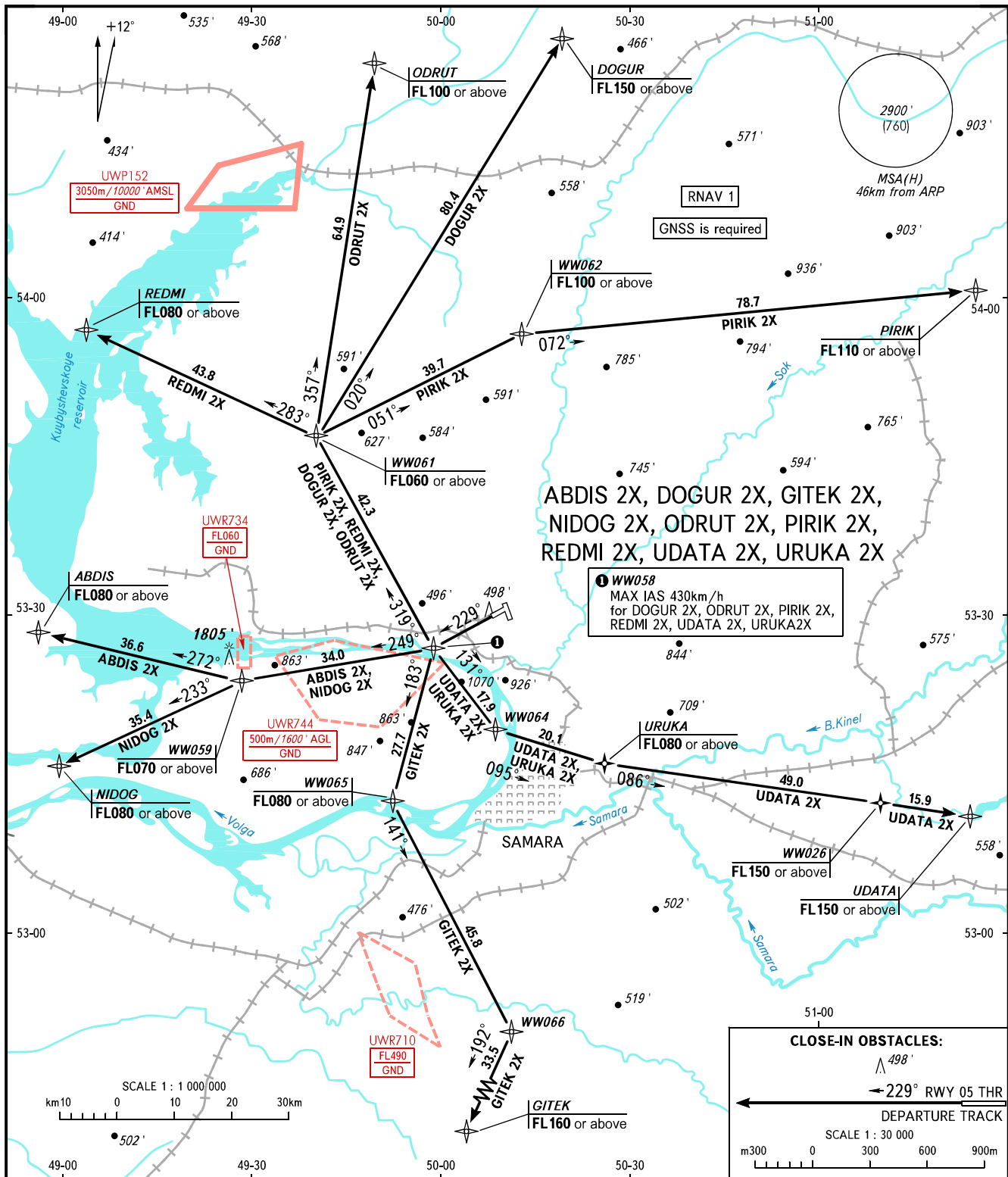


STANDARD DEPARTURE CHART
INSTRUMENT (SID) - ICAO

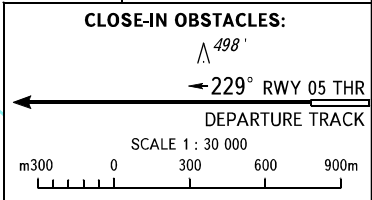
TRANSITION ALT: **4000'**
TRANSITION HGT: **(1095)**

SAMARA, RUSSIA
KURUMOCH
RNAV RWY 23



**ABDIS 2X, DOGUR 2X, GITEK 2X,
NIDOG 2X, ODRUT 2X, PIRIK 2X,
REDMI 2X, UDATA 2X, URUKA 2X**

WW058
MAX IAS 430km/h
for DOGUR 2X, ODRUT 2X, PIRIK 2X,
REDMI 2X, UDATA 2X, URUKA 2X



TOWER **118.200**
RADAR **128.000**
APPROACH **130.800**

WARNING: 1. There are close-in obstacles.
2. MNM climb gradients:
- 4.7% up to FL070 for ABDIS 2X;
- 3.7% up to 900'(150) due to obstacles for DOGUR 2X;
- 7.5% up to FL080 for GITEK 2X;
- 4.7% up to FL070 for NIDOG 2X;
- 3.7% up to 900'(150) due to obstacles for ODRUT 2X;
- 3.7% up to 900'(150) due to obstacles PIRIK 2X;
- 3.7% up to 900'(150) due to obstacles for REDMI 2X;
- 7.4% up to 900'(150) due to obstacles, then 7.4% up to FL080 due to the airspace structure for UDATA 2X;
- 7.4% up to 900'(150) due to obstacles, then 7.4% up to FL080 due to the airspace structure for URUKA 2X.

BEARINGS AND TRACKS ARE MAGNETIC
ALTITUDES AND ELEVATIONS IN **FEET**
HEIGHTS IN METRES
DISTANCES IN KILOMETRES

Alt set: -QNH(QFE on req);
-hPa(mm on req).