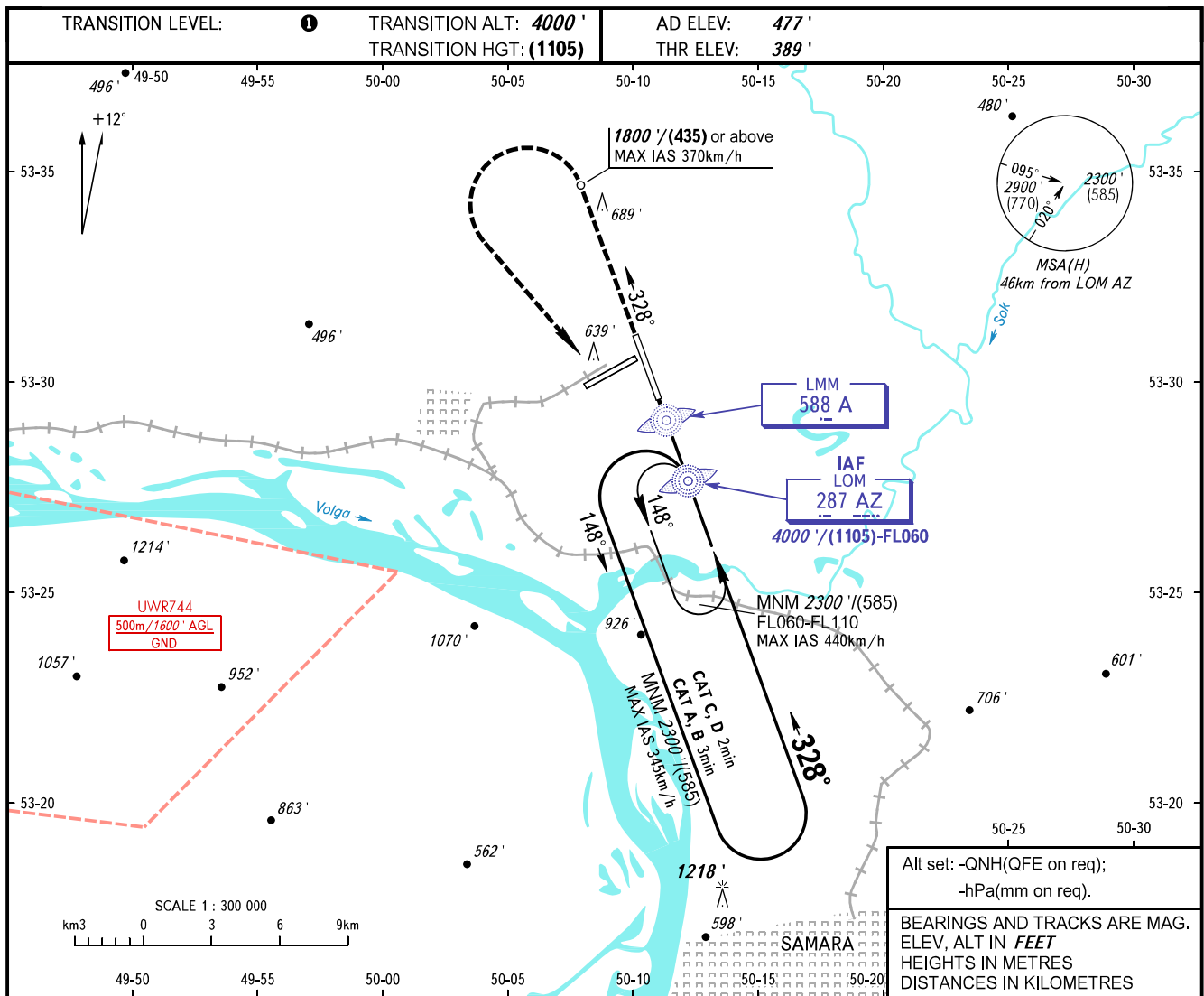


**INSTRUMENT
APPROACH
CHART - ICAO**

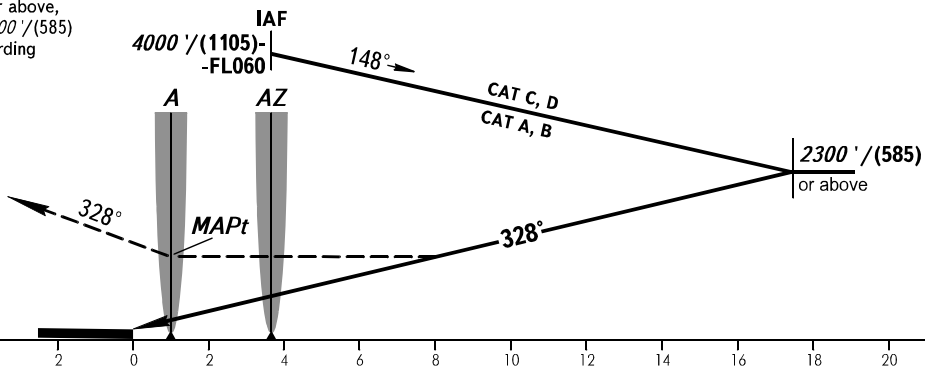
RADAR	128.000
TOWER	118.200

SAMARA, RUSSIA
KURUMOCH
NDB D RWY 33



MISSED APPROACH

Climb on track 328° to 1800' / (435) or above, turn LEFT to LOM AZ climbing to 2300' / (585) or by ATS unit instruction, then according chart or to holding area.



OCA(H)		A	B	C	D
Straight-in					
	Approach				
Circling		1330' (940')	1330' (940')	1330' (940')	1330' (940')

- ① **TRANSITION LEVEL:**
- FL050 when QNH is 1013 hPa (760mm mercury column) or above;
 - FL060 when QNH is 977 hPa (733mm mercury column) or above, but less than 1013 hPa (760mm mercury column);
 - FL070 when QNH is less than 977 hPa (733mm mercury column).
- WARNING:**
1. Turn before MAPt is PROHIBITED.
 2. MAPt at LMM. Timing not authorized for defining MAPt.