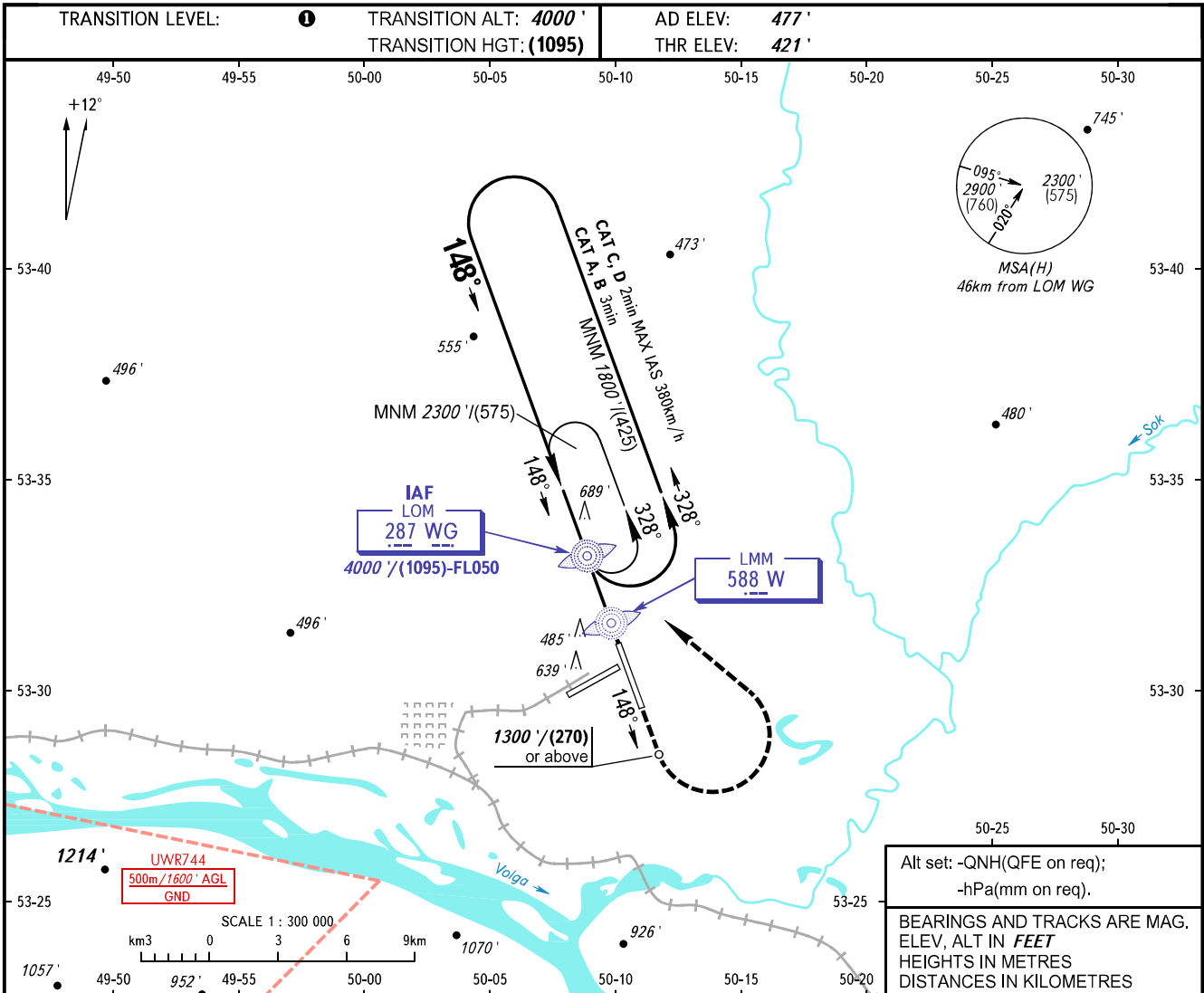


**INSTRUMENT
APPROACH
CHART - ICAO**

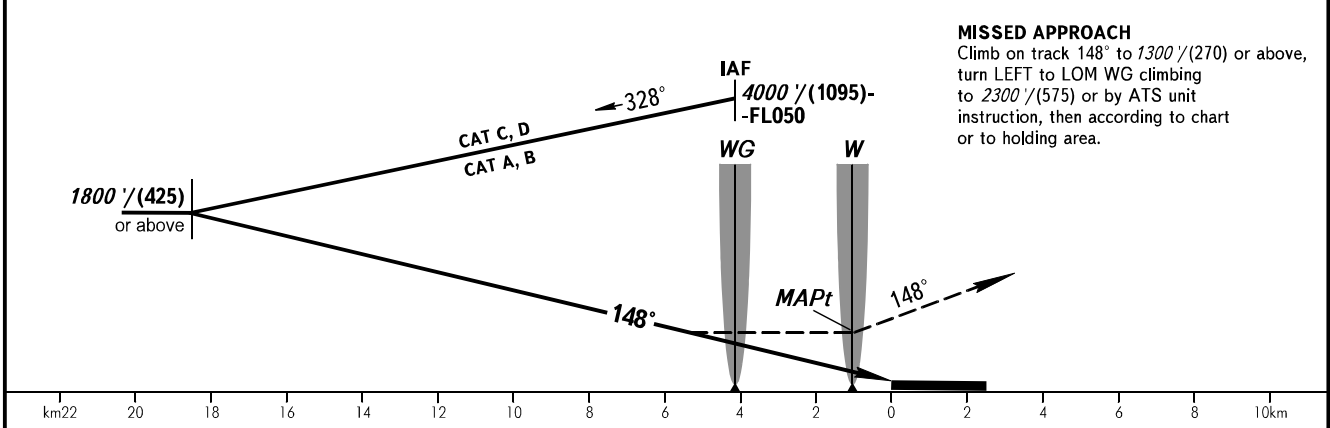
RADAR	128.000
TOWER	118.200

SAMARA, RUSSIA
KURUMOCH
NDB C RWY 15



Alt set: -QNH(QFE on req);
-hPa(mm on req).

BEARINGS AND TRACKS ARE MAG. ELEV, ALT IN FEET HEIGHTS IN METRES DISTANCES IN KILOMETRES



MISSED APPROACH
Climb on track 148° to 1300'/(270) or above, turn LEFT to LOM WG climbing to 2300'/(575) or by ATS unit instruction, then according to chart or to holding area.

OCA(H)		A	B	C	D
Straight-in Approach					
Circling		1030' (610')	1030' (610')	1090' (610')	1220' (740')

TRANSITION LEVEL:

- FL050 when QNH is 1013 hPa (760mm mercury column) or above;
- FL060 when QNH is 977 hPa (733mm mercury column) or above, but less than 1013 hPa (760mm mercury column);
- FL070 when QNH is less than 977 hPa (733mm mercury column).

WARNING:

1. Turn before MAPt is PROHIBITED.
2. MAPt at LMM. Timing not authorized for defining MAPt.

CHANGE: New chart