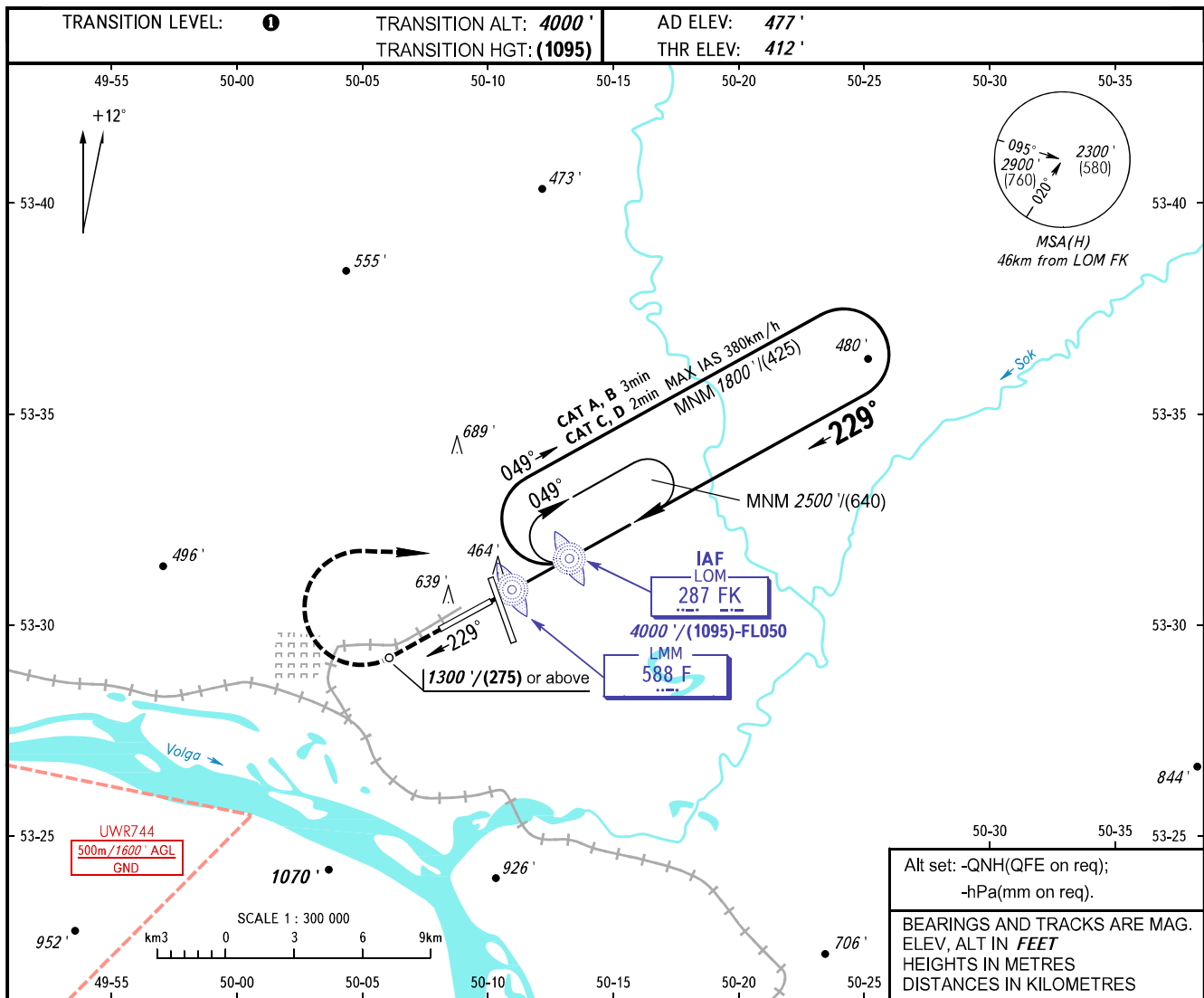


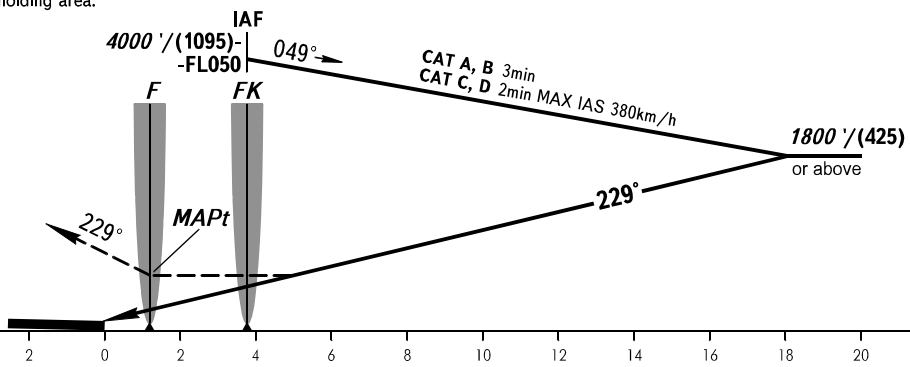
**INSTRUMENT  
APPROACH  
CHART - ICAO**

**SAMARA, RUSSIA  
KURUMOCH  
NDB B RWY 23**

RADAR	128.000
TOWER	118.200



**MISSED APPROACH**  
Climb on track 229° to 1300'/(275) or above,  
turn RIGHT to LOM FK climbing  
to 2500'/(640) or by ATS unit instruction,  
then according to chart or to holding area.



OCA(H)	A	B	C	D
Straight-in				
Approach				
Circling	940' (460')	980' (500')	1090' (610')	1220' (740')

**TRANSITION LEVEL:**  
- FL050 when QNH is 1013 hPa (760mm mercury column) or above;  
- FL060 when QNH is 977 hPa (733mm mercury column) or above, but less than 1013 hPa (760mm mercury column);  
- FL070 when QNH is less than 977 hPa (733mm mercury column).

**WARNING:**  
1. Turn before MAPt is PROHIBITED.  
2. MAPt at LMM. Timing not authorized for defining MAPt.