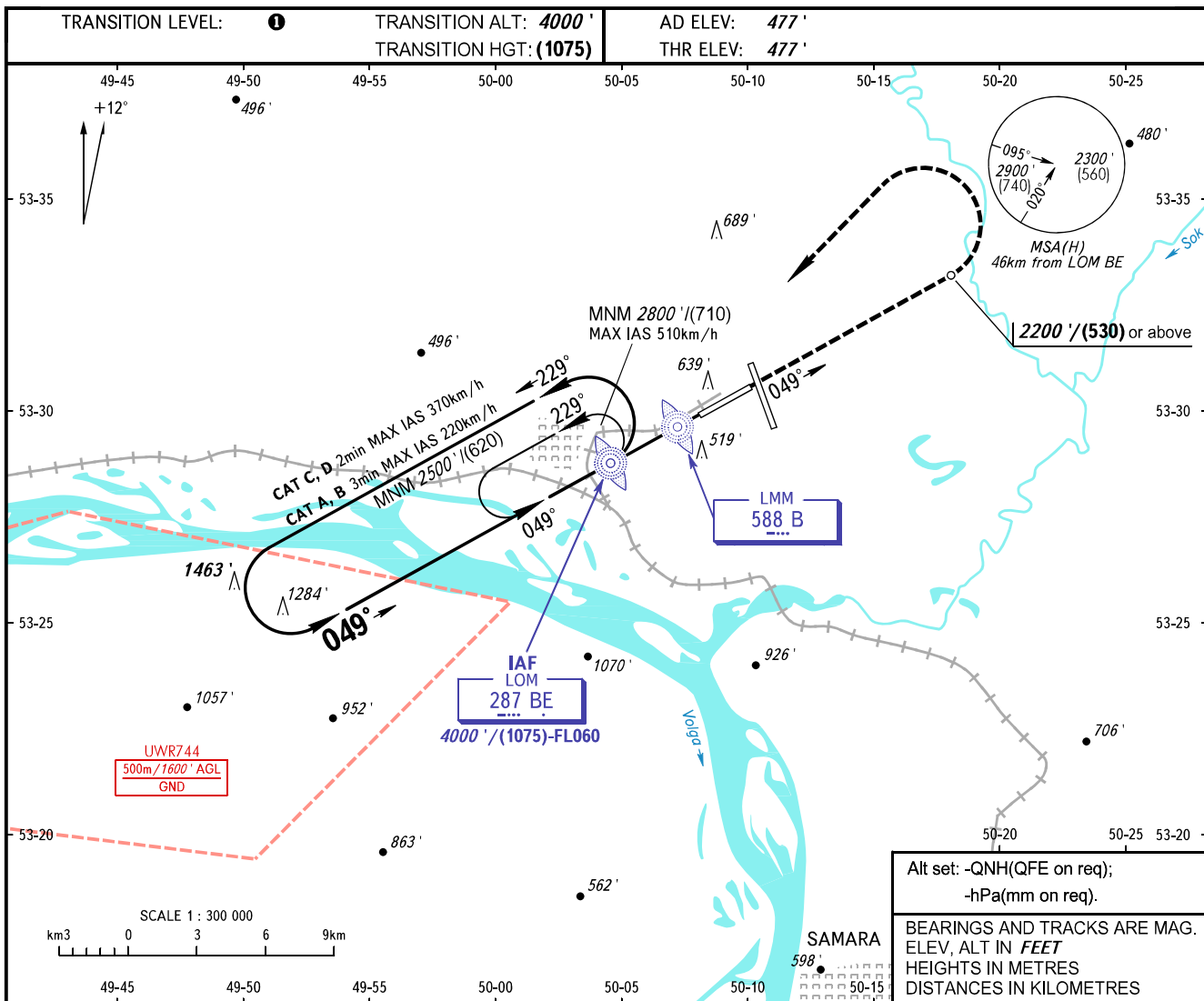


**INSTRUMENT  
APPROACH  
CHART - ICAO**

RADAR	128.000
TOWER	118.200

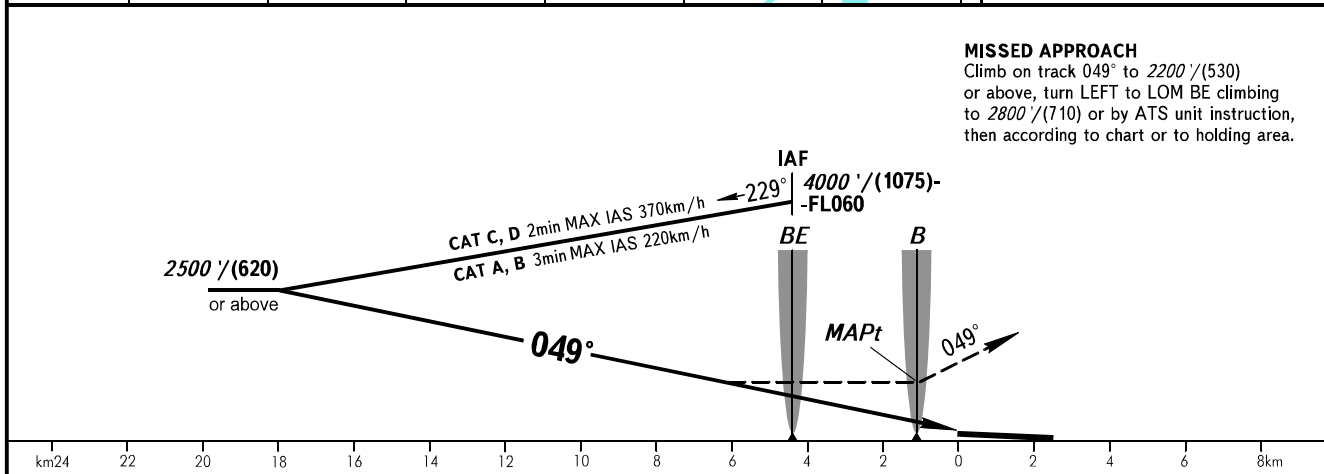
**SAMARA, RUSSIA  
KURUMOCH  
NDB A RWY 05**



Alt set: -QNH(QFE on req);  
-hPa(mm on req).

BEARINGS AND TRACKS ARE MAG.  
ELEV, ALT IN FEET  
HEIGHTS IN METRES  
DISTANCES IN KILOMETRES

**MISSED APPROACH**  
Climb on track 049° to 2200' (530) or above, turn LEFT to LOM BE climbing to 2800' (710) or by ATS unit instruction, then according to chart or to holding area.



OCA(H)		A	B	C	D
Straight-in Approach					
Circling		1720' (1250')	1720' (1250')	1720' (1250')	1720' (1250')

**TRANSITION LEVEL:**  
- FL050 when QNH is 1013 hPa (760mm mercury column) or above;  
- FL060 when QNH is 977 hPa (733mm mercury column) or above, but less than 1013 hPa (760mm mercury column);  
- FL070 when QNH is less than 977 hPa (733mm mercury column).

**WARNING:**  
1. Turn before MAPt is PROHIBITED.  
2. MAPt at LMM. Timing not authorized for defining MAPt.

CHANGE: New chart