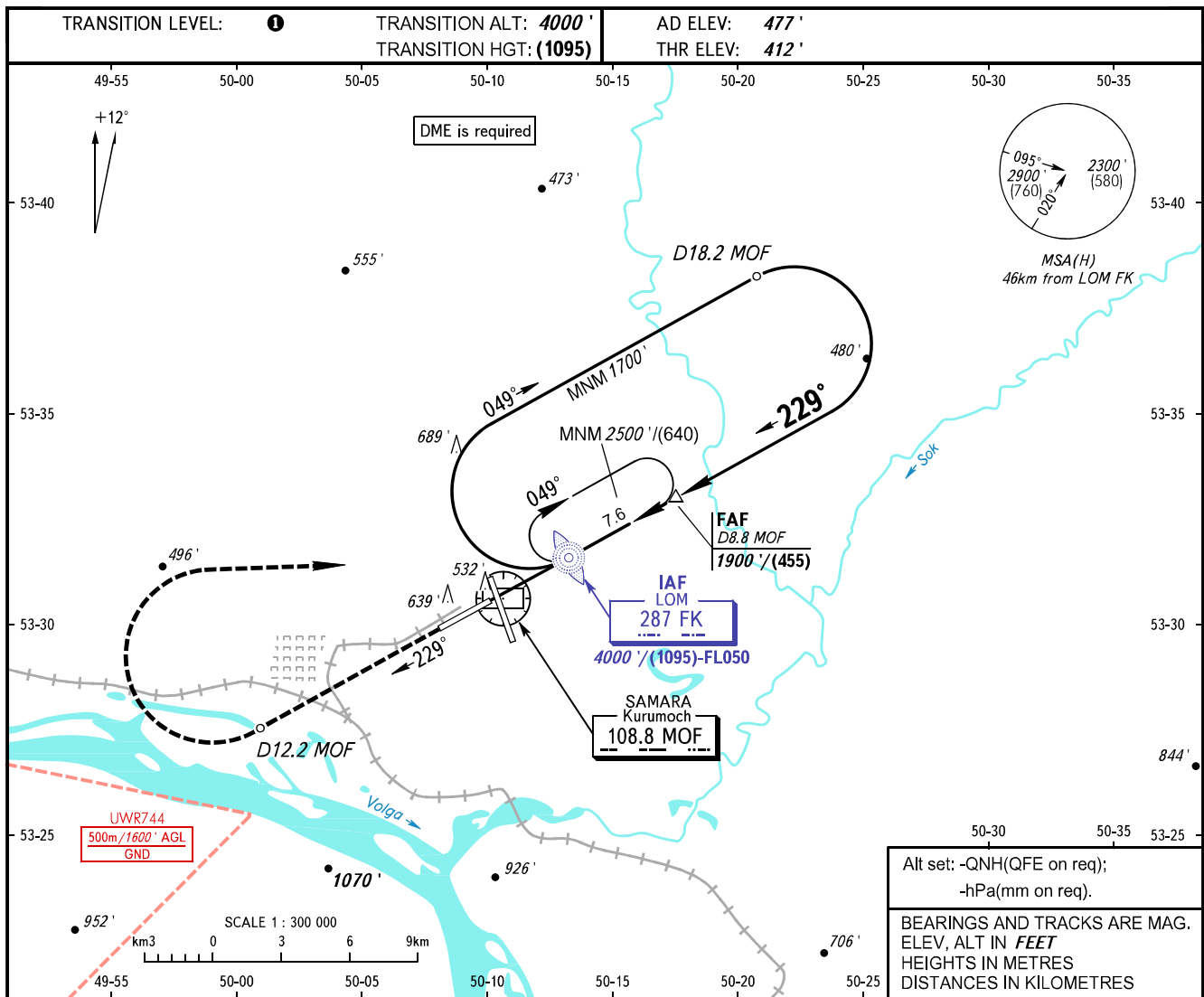


**INSTRUMENT  
APPROACH  
CHART - ICAO**

**SAMARA, RUSSIA  
KURUMOCH  
NDB Z RWY 23**

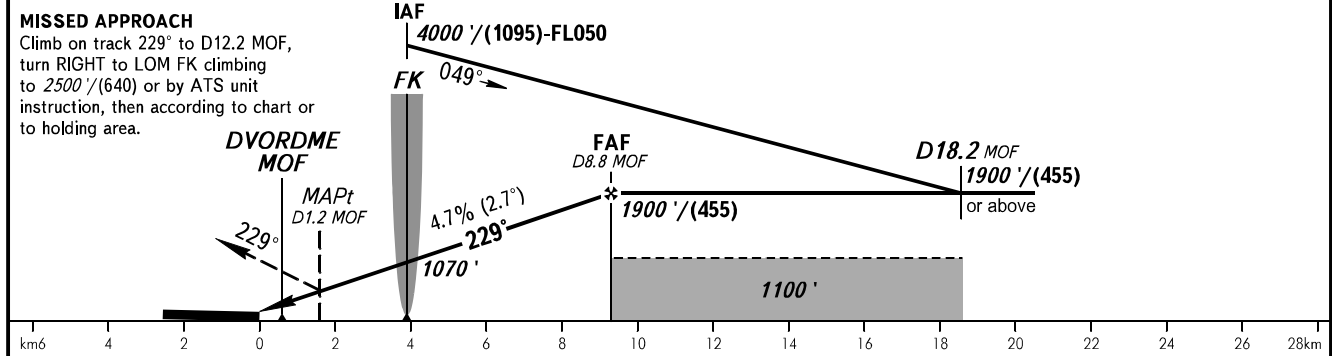
RADAR	128.000
TOWER	118.200



Alt set: -QNH(QFE on req);  
-hPa(mm on req).

BEARINGS AND TRACKS ARE MAG.  
ELEV, ALT IN FEET  
HEIGHTS IN METRES  
DISTANCES IN KILOMETRES

DME MOF	2.0	4.0	6.0	8.8
ALTITUDE	850'	1160'	1470'	1900'



OCA(H)	A	B	C	D						
Straight-in Approach	720' (300')	720' (300')	720' (300')	720' (300')						
Circling	940' (460')	980' (500')	1090' (610')	1220' (740')						
GROUND SPEED	km/h	150	180	210	240	270	300	330	360	390
RATE OF DESCENT	m/s	2.0	2.4	2.7	3.1	3.5	3.9	4.3	4.7	5.1
RATE OF DESCENT	ft/min	385	463	540	617	694	771	848	925	1002

**1** TRANSITION LEVEL:  
- FL050 when QNH is 1013 hPa (760mm mercury column) or above;  
- FL060 when QNH is 977 hPa (733mm mercury column) or above, but less than 1013 hPa (760mm mercury column);  
- FL070 when QNH is less than 977 hPa (733mm mercury column).

**WARNING**  
MAPt at D1.2 MOF. Timing not authorized for defining MAPt.