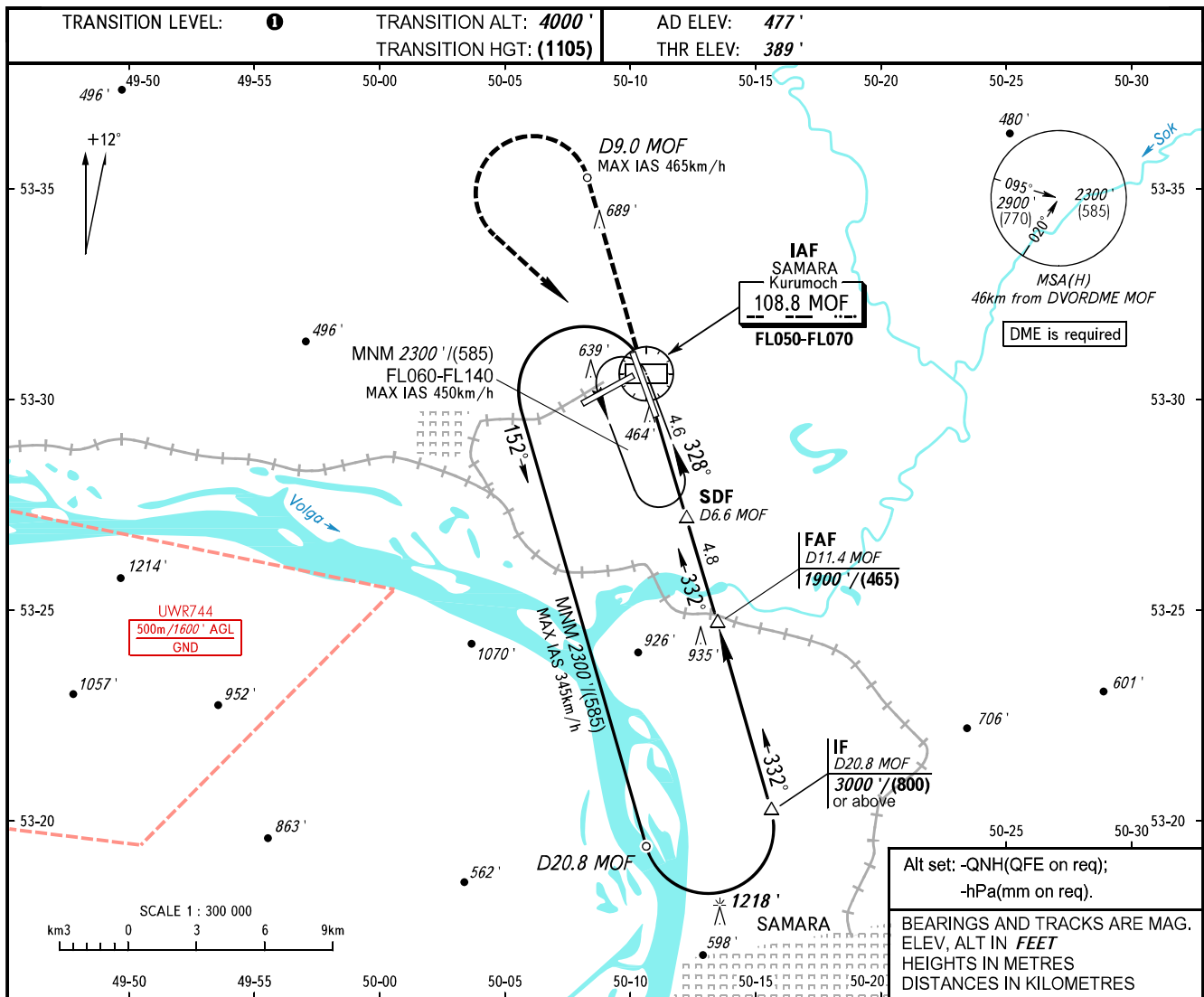


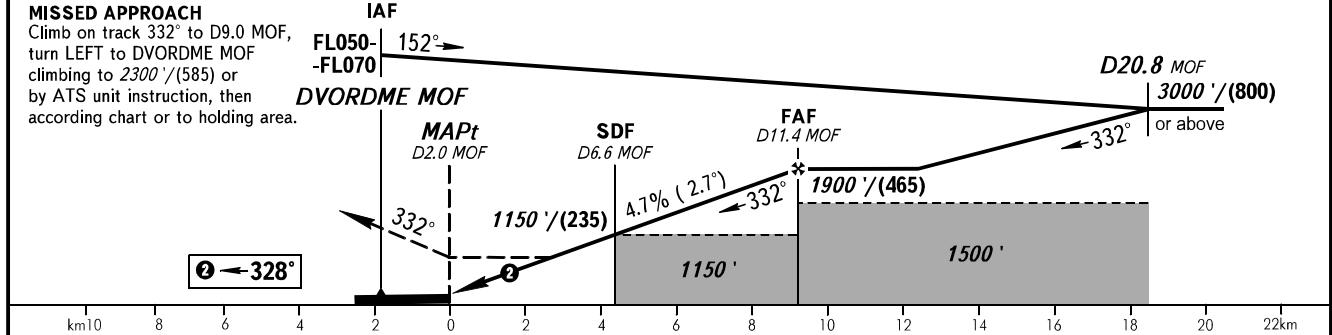
**INSTRUMENT
APPROACH
CHART - ICAO**

**SAMARA, RUSSIA
KURUMOCH
DVOR RWY 33**

RADAR	128.000
TOWER	118.200



DME MOF	4.0	6.0	8.0	10.0	11.4
ALTITUDE	760'	1070'	1370'	1680'	1900'



OCA(H)		A	B	C	D
Straight-in	With SDF	790' (400')	790' (400')	790' (400')	790' (400')
	WO SDF	1150' (760')	1150' (760')	1150' (760')	1150' (760')
Approach					
Circling		940' (460')	980' (500')	1090' (610')	1220' (740')

1 TRANSITION LEVEL:
 - FL050 when QNH is 1013 hPa (760mm mercury column) or above;
 - FL060 when QNH is 977 hPa (733mm mercury column) or above, but less than 1013 hPa (760mm mercury column);
 - FL070 when QNH is less than 977 hPa (733mm mercury column).
WARNING:
 1. Final approach track is offset by 4' from the RCL.
 2. MAPt at D2.0 MOF. Timing not authorized for defining MAPt.

GROUND SPEED	km/h	150	180	210	240	270	300	330	360	390
RATE OF DESCENT	m/s	2.0	2.4	2.7	3.1	3.5	3.9	4.3	4.7	5.1
RATE OF DESCENT	ft/min	385	463	540	617	694	771	848	925	1002