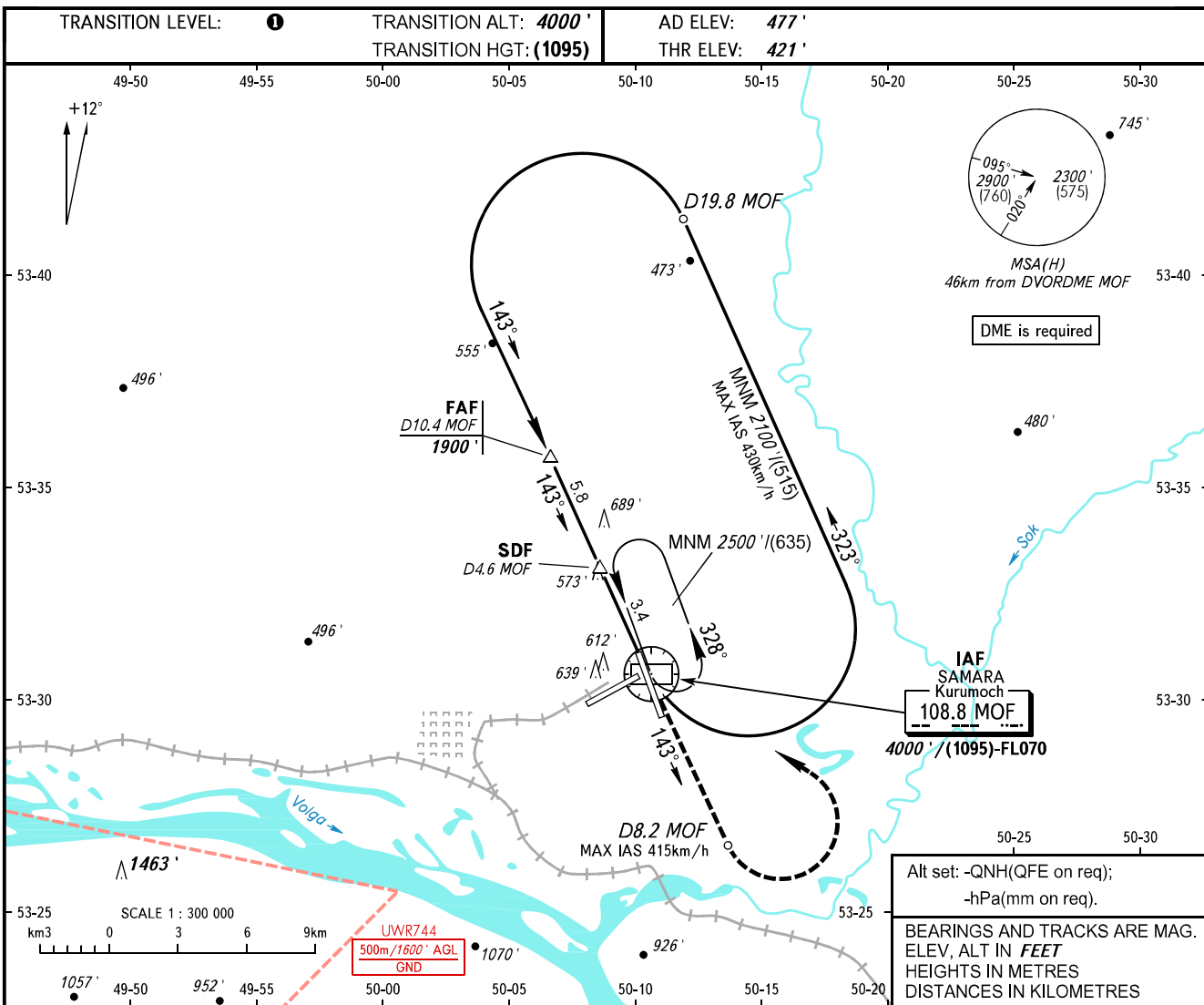


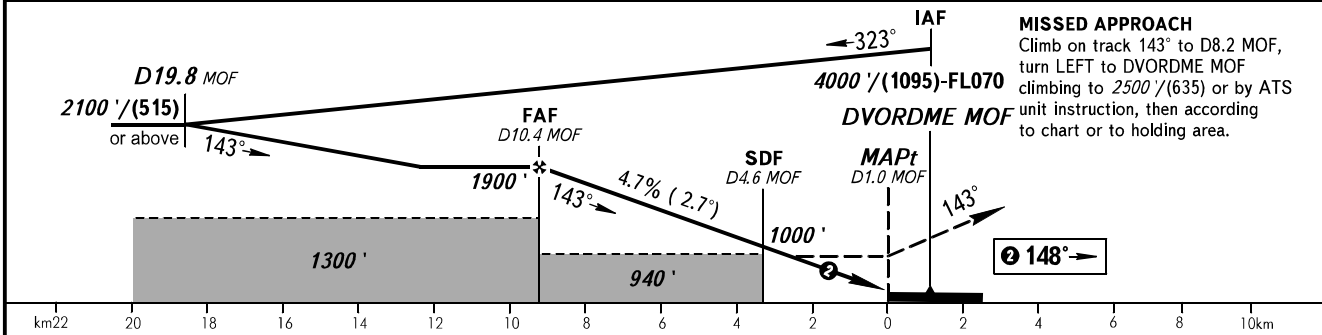
**INSTRUMENT
APPROACH
CHART - ICAO**

RADAR	128.000
TOWER	118.200

**SAMARA, RUSSIA
KURUMOCH
DVOR RWY 15**



DME MOF	10.4	8.0	6.0	4.0
ALTITUDE	1900'	1540'	1230'	920'



OCA(H)		A	B	C	D
Straight-in	With SDF	860' (440')	860' (440')	860' (440')	860' (440')
	WO SDF	940' (520')	940' (520')	940' (520')	940' (520')
Approach					
Circling		940' (460')	980' (500')	1090' (610')	1220' (740')
GROUND SPEED		km/h	150	180	210
RATE OF DESCENT		m/s	2.0	2.4	2.7
RATE OF DESCENT		ft/min	385	463	540

TRANSITION LEVEL:

- FL050 when QNH is 1013 hPa (760mm mercury column) or above;
- FL060 when QNH is 977 hPa (733mm mercury column) or above, but less than 1013 hPa (760mm mercury column);
- FL070 when QNH is less than 977 hPa (733mm mercury column).

WARNING:

1. Final approach track is offset by 5° from the RCL.
2. MAPt at D1.0 MOF. Timing not authorized for defining MAPt.

240	270	300	330	360	390
3.1	3.5	3.9	4.3	4.7	5.1
617	694	771	848	925	1002