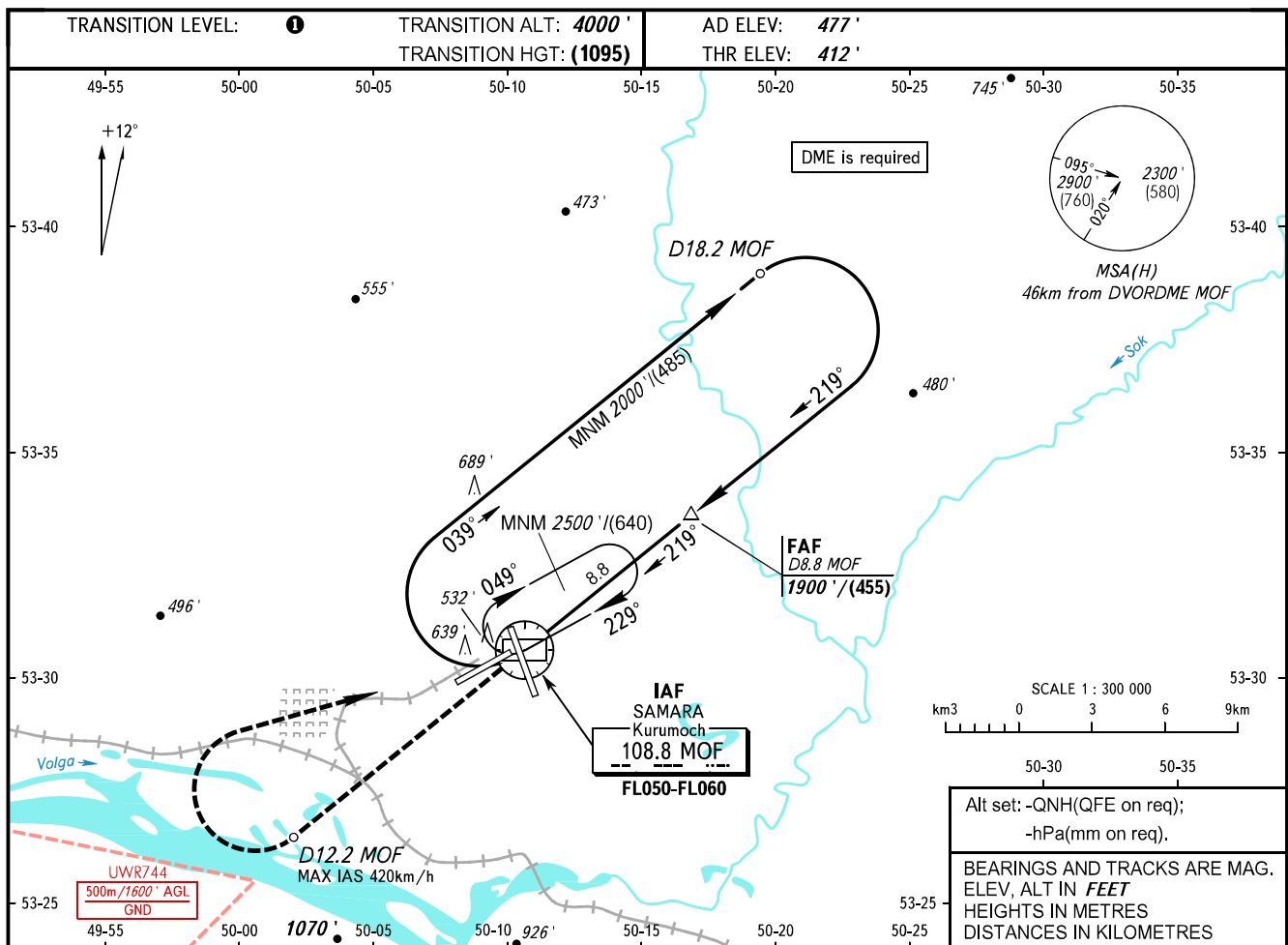


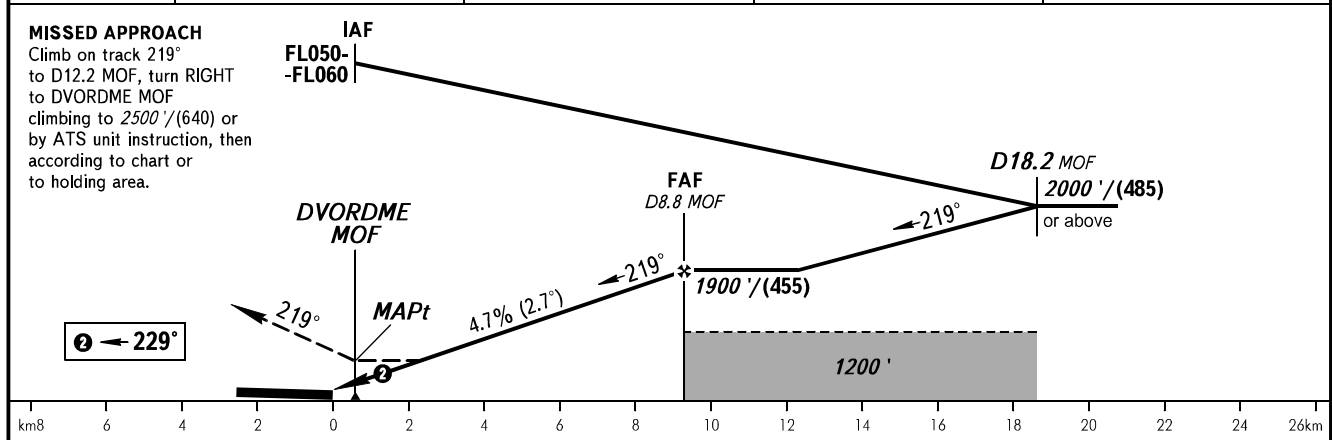
**INSTRUMENT  
APPROACH  
CHART - ICAO**

**SAMARA, RUSSIA  
KURUMOCH  
DVOR RWY 23**

RADAR	128.000
TOWER	118.200



DME MOF	2.0	4.0	6.0	8.8
ALTITUDE	850'	1160'	1470'	1900'



OCA(H)		A	B	C	D					
Straight-in Approach		760' (350')	760' (350')	760' (350')	760' (350')					
Circling		940' (460')	980' (500')	1090' (610')	1220' (740')					
<p>① <b>TRANSITION LEVEL:</b></p> <ul style="list-style-type: none"> <li>- FL050 when QNH is 1013 hPa (760mm mercury column) or above;</li> <li>- FL060 when QNH is 977 hPa (733mm mercury column) or above, but less than 1013 hPa (760mm mercury column);</li> <li>- FL070 when QNH is less than 977 hPa (733mm mercury column).</li> </ul> <p><b>WARNING:</b></p> <ol style="list-style-type: none"> <li>1. Final approach track is offset by 10° from the RCL.</li> <li>2. MAPt at DVORDME MOF. Timing not authorized for defining MAPt.</li> </ol>										
GROUND SPEED	km/h	150	180	210	240	270	300	330	360	390
RATE OF DESCENT	m/s	2.0	2.4	2.7	3.1	3.5	3.9	4.3	4.7	5.1
RATE OF DESCENT	ft/min	385	463	540	617	694	771	848	925	1002